



# School of Psychology

## Bridging Programme Information Sheet

### Graduate Diploma in Science or Certificate of Proficiency (One Year Full Time, Part Time options available)

The options listed above are available for students who already have a Bachelors degree in another subject (not Psychology) who wish to gain the equivalent of a Psychology Major.

Both options (if completed successfully) can be used as a platform for students to continue on to postgraduate study in Psychology (BA/BSc(Hons), PGDipArts/Science)

The **Certificate of Proficiency** option is recommended for students who have taken some Psychology courses or a minor in their Bachelors Degree. In consultation with our Bridging Programme Advisor, this option can give students the equivalent of a major in Psychology, i.e. a certain number of undergraduate courses are taken to fulfil the prerequisite requirements for postgraduate study. **Note: there is no formal qualification attached to this option.**

The **Graduate Diploma in Science (GradDipSci)** is recommended for students who have little or no courses in Psychology in their Bachelors degree. Students enrolled in this programme will be required to complete 3 Stage II courses and 5 Stage III courses in Psychology (120 points) to fulfil the School's requirements of a major\*. If planning to continue into postgraduate study, we strongly recommend that students take PSYCH 306.

Stage II and III courses may be completed in one year. A number of Stage III courses depend heavily on Stage II work.

PSYCH 303 (Cognitive Science) *requires* PSYCH 201 (Perception & Cognition)  
PSYCH 305 (Human Neuroscience) *requires* PSYCH 202 (Biopsychology)  
PSYCH 309 (Learning) *requires* PSYCH 203 (Learning and Behaviour)

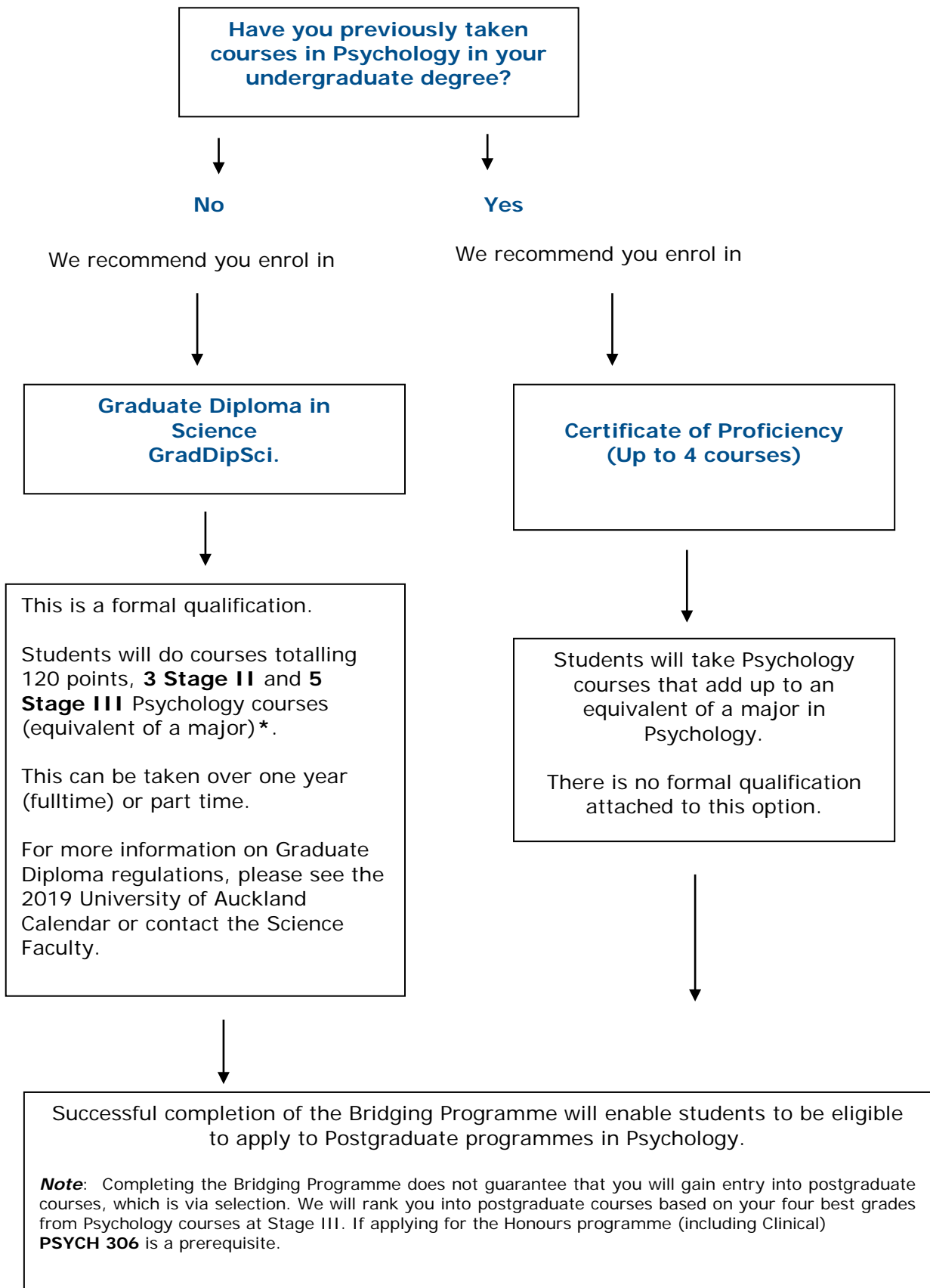
The above constraints may limit the Stage III courses that students may enrol into. If students do the Bridging Programme over two years, there may be more choice of Stage III courses.

**Note:** Completing the Bridging Programme does not guarantee that you will gain entry into postgraduate courses, which is via selection. We will rank you into postgraduate courses based on your four best grades from Psychology courses at Stage III. If applying for the Honours programme (including Clinical) **PSYCH 306** is a prerequisite. A minimum entry grade cannot be specified as it varies from year to year depending on the grades of the students applying.

To apply for approval into courses students should contact one of the Psychology Bridging Programme Advisors, who will assist you in formulating your programme. **Please note:** students will also need to have applied to, and been admitted to, The University of Auckland before enrolment into this programme is approved. To apply to the "COP" or "Graduate Diploma" go to [www.auckland.ac.nz](http://www.auckland.ac.nz) and complete the online application by clicking the "Apply Now" link. Enrolments into Psychology courses must be done in consultation with the Psychology Bridging Programme Advisor.

### Psychology Bridging Programme Advisors:

Michelle Burstall or Andrea Mead  
Phone: +64 9 9238526 / +64 9 9236253  
Email: [m.burstall@auckland.ac.nz](mailto:m.burstall@auckland.ac.nz) / [a.mead@auckland.ac.nz](mailto:a.mead@auckland.ac.nz)



\* We recommend you take PSYCH 306 if you intend to progress into postgraduate study

# How to Apply for the School of Psychology Bridging Programme

## STEP ONE

You need to apply and be admitted to The University of Auckland prior to your enrolment into the bridging programme and before any psychology courses are approved. To apply to the "Certificate of Proficiency" or "Graduate Diploma" go to [www.auckland.ac.nz](http://www.auckland.ac.nz) and complete the online application by clicking the "Apply Now" link or contact student information via 0800 61 62 63 or email [studentinfo@auckland.ac.nz](mailto:studentinfo@auckland.ac.nz). **You should complete this step ASAP after receiving this email as it takes time to process your application.**

Applications to The University of Auckland must be received no later than the published closing date. Applications received after the closing date will only be considered on the basis of academic merit, if there are places available. International students should start the application process as early as possible to allow sufficient time to apply for a visa.

Make sure that you select the correct programme of study: either the Certificate of Proficiency OR the GradDipSci.

<http://www.studentservices.auckland.ac.nz/uoa/home/student-services-online/sso-apply/sso-apply-admission>

Once your application has been assessed you may be offered a place. You will need to accept your offer of a place before your enrolment can continue.

<http://www.studentservices.auckland.ac.nz/uoa/home/student-services-online/sso-apply/sso-how-to-accept-or-decline-an-offer-of-place>

## STEP TWO

Enrolments into Psychology courses must be done in consultation with the Psychology Bridging Programme Advisor. Please include a copy of your University transcript with your initial email contact. The Bridging Programme Advisor will assist you in formulating your programme.

Satisfactory completion of courses (and their prerequisites, if any) does not guarantee entry into any postgraduate psychology programme. It merely indicates that the student will have adequate undergraduate preparation to be considered for selection to postgraduate psychology courses.

Use the link below to apply for on Student Services Online. Enrol in your courses on the day that the Psychology enrolments open (early in November).

<http://www.studentservices.auckland.ac.nz/uoa/sso-enrol-in-course>

As you are a bridging student you will need to apply for a concession to enrol in the courses that you select. <https://www.auckland.ac.nz/en/study/applications-and-admissions/enrolment/choosing-your-courses/applying-for-an-enrolment-concession.html>

## Checklist for students intending to enrol in a Graduate Diploma or Certificate of Proficiency in Psychology

- Applied for Admission to The University of Auckland: [www.auckland.ac.nz](http://www.auckland.ac.nz) and click on "Apply Now". Apply for the correct programme (GradDipSci or Certificate of Proficiency) on Student Services Online. Ensure that you have provided evidence of your previous degree with your application for admission.
- Email one of the School of Psychology Bridging Programme Advisors to discuss your suitability to apply for this programme and selection of your courses. You will need to provide a copy of your University transcript in your email.
- Timetable - It is recommended that you check Student Services Online for course timings and formulate your timetable. Due to the nature of the programme, there could be some timetable clashes, however you should ensure these are kept to a minimum. Although some timetable clashes can be waived (one hour only), the School of Psychology recommends that you choose courses that have no clashes.
- Faculty course enrolment (Science - complete online concession on Student Services Online)

## Flow chart for students intending to enrol in a Graduate Diploma or Certificate of Proficiency in Psychology

### **Apply for Admission to the University of Auckland** (this is a separate process from enrolment)

Log into website [www.auckland.ac.nz/applynow](http://www.auckland.ac.nz/applynow)  
Apply for correct programme (Graduate Diploma Science, Certificate of Proficiency)  
on Student Services Online.

**Remember to provide copies of your academic record documents from your previous tertiary institution**

### **Bridging Programme Information.**

Discuss your course of study with the Bridging Programme Advisor and get their approval to enrol in the courses online. You will need provide a copy of your academic record from your previous tertiary institution confirming your graduate status.

### **Faculty Enrolment**

Complete the online concession form on Student Services Online for the Science Faculty enrolment.

Faculty enrolments are processed once Admission to the University has been established and programme enrolled into on Student Services Online.

Students will be advised via Student Services Online once their enrolment has been approved. A fees invoice will be sent to students once enrolment has been approved.