



LENScience Senior Biology Seminar Series

Teacher Update Number 3 – May 4th 2009

In this issue:

- [Test Signals](#)
- [Seminar 1](#)
- [Announcing LENS Chat](#)
- [Waiuku and Rangitoto ask questions](#)
- [School Logins / Student Logins](#)
- [Otago Update](#)
- [“I Love My Heart” Year 7-10 Education Event via LENS TV](#)

The next teacher update will be posted on Monday 11th May

Test Signals

Successful broadcast and webcast signals have all been conducted and are available for you to check. A test signal will play prior to the seminar starting. Please make sure your IT support have checked your signal before Thursday.

For Satellite viewers - [click here](#) to check the tuning instructions

For NEN viewers – two multicast streams will run. Please check in advance that you are receiving the test signal: <http://disney.auckland.ac.nz/lens.aspx> <http://dreamworks.auckland.ac.nz/lens.aspx>

Seminar 1

Students from more than 75 schools will be joined together for seminar 1. Congratulations to all the schools that have organised themselves to be a part of this! Thanks to the regional centres that are helping schools come together for this programme.

LENScience will have teachers and IT experts on the wiki and seminar chat monitoring questions.

Technical hot line during the seminar - 021 650 447

Announcing LENSscience Seminar Chat

A live online chat page has been created. You can see this page now, it will be active during the seminar to receive questions and queries.

Please ask students to use your school login. YOU DO NOT NEED A PASSWORD FOR LENS Chat.

LENS Chat is linked from the [Biotechnology Seminar page](#)

Welcome to week 2 of the LENSscience Senior Biology Seminar Programme.

All schools should have provided students with [seminar papers](#).

Have you registered your school for “[I Love My Heart?](#)” Science and Health Education for Y7-10.

LENS Chat

Username:

Password*:

Login

Posting Seminar Questions

Well done Waiuku College and Rangitoto College. Your students have set a perfect example with great questions and the correct format with their names, school and date! These questions will be addressed in the seminar.

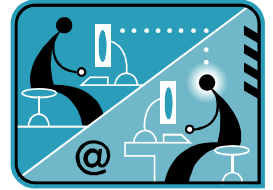


To post a question to the wiki.....

..... go to the [Biotechnology and Cancer Seminar Home Page](#) and click on the link "Post a Question for the Seminar"

[Click here](#) to see a movie that takes you through how to add a question to the wiki.

OR [click here](#) to find a print version of how to edit the wiki.

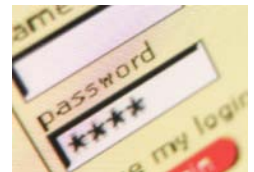


Registrations and Logins for Schools / Students

Remember you must be logged-on to write to the question and discussion pages.

Please encourage your students to use your school login and password.

If your students want their own login they can do this but please realise that this is not instant! Once you create an account we have to manually activate your account. Anna is checking these daily – but will not be checking over the weekend!



Late registrations will be accepted, however while we will do our best to process these in time to ensure you have a login and password, we cannot guarantee this.

Otago Regional Centre – Details now online

Full details of the Otago Regional Centre are now available online - [click here](#).

PLEASE REMEMBER THAT YOU STILL HAVE TO REGISTER WITH LENSscience

Other Regional Centres [Click here](#) to see whether there is a school near you that has the technology set up. Schools that have offered to host other schools are listed in bold.

"I Love My Heart" Year 7-10 education event from LENS TV



Hopefully we all love our heart!
How does it work, why it is so important?
How do you love it for life?



This science and health education event for Year 7-10 students will take place on May 15th, 2009. Students will be taken on a dynamic journey of discovery, explaining just how amazing the human heart is, how it functions, what heart disease is, and how to look after your heart. The programme will use live demonstrations of heart rate, blood pressure and EKG, audio-visuals, models and audience participation providing students with a take home message that is relevant to their lives and their futures.

[Click here](#) for more information and to register your school to participate in this event.

LENScience

Bringing Schools and Scientists Together

<http://lens.auckland.ac.nz>