

## LENScience Senior Biology Seminar Series

### Teacher Update Number 2 - April 27<sup>th</sup> 2009

#### In this issue:

- [Registration](#)
- [Seminar 1 scientists hit world news](#)
- [New Regional Centres @ The University of Otago](#)
- [Technical Questions](#)
- [Test Signals](#)
- [School Logins](#)
- [Posting Questions](#)
- ["I Love My Heart" Year 7-10 Education Event via LENS TV](#)

***The next teacher update will be posted on Monday 4<sup>th</sup> May***

**Welcome to week 1 of the  
LENScience Senior Biology Seminar  
Programme.**

All schools should be providing  
students with [seminar papers](#) this  
week.

[Focus questions](#) have been  
provided for your in-school  
workshop.

#### **Registrations**

Thank you to all those schools than managed to get their registrations to us by April 17<sup>th</sup>. Your school login and password has been sent and you should have received notification of this from [Anna Lehmann](#).

To check that your registration has been processed please [click here](#)

Late registrations will be accepted, however while we will do our best to process these in time to ensure you have a login and password, we cannot guarantee this.

#### **Seminar One: Students will meet world leading cancer scientists**

Students participating in the LENScience Senior Biology Seminar Series will meet and find out about the work of world class scientists. The 1<sup>st</sup> seminar focuses on the work of the Liggins Institute Breast Cancer Research team. Students will have an opportunity to question leading scientists Professor Peter Lobie and Dr Jo Perry who this week have announced a major breakthrough in cancer research.

The team, led by [Professor Peter Lobie](#) have announced the discovery of three key molecules, never before identified that are pivotal to the spread of cancer. They have shown that these molecules are found in 65-90% of all breast cancers and result in poor patient survival. The Liggins Institute scientists have developed mechanisms to inhibit these molecules in breast cancer to reduce the growth of tumours.

[Click here to see the TV One news item.](#)



## **New Regional Centre – The University of Otago**

The NRCGD Otago Regional team led by Dr's Peter Dearden and Hamish Spenser have organised for a regional centre to be set up at the University of Otago. NRCGD PhD student Sarah Morgan will coordinate this hub with Pru Casey from Otago Boys' High School. Schools in the Dunedin region who wish to participate at the University of Otago should contact [Sara Morgan](#) for more details.

**Please remember that schools participating via a regional centre still have to complete a registration form so that we know you are part of the programme and you have a login.**

**Other Regional Centres** [Click here](#) to see whether there is a school near you that has the technology set up. Schools that have offered to host other schools are listed in bold.

## **Technical Questions**

Schools with concerns about receiving the broadcasts are encouraged to look on the wiki site where you will find [technical information](#) and a FAQ Page. A discussion page for IT technicians has also been added.

If you cannot find the answer there, please use the help-service available at [ligginsinfo@auckland.ac.nz](mailto:ligginsinfo@auckland.ac.nz)



Schools still needing to install a set top box may wish to contact [Babylon Communication Ltd.](#)

This company have installed systems for several schools and have over 40 installers nationwide.  
Phone 0800 255 255      <http://www.babylon.net.nz>

## **Test Signal**

The test signal for satellite TV connections is now up so that you can check that your set top box is correctly connected.

Please [click here](#) for instructions.

Having problems receiving the test signal or tuning your decoder – please [contact us](#) for assistance.



## **School Login Information**

Once you register you will receive a series of emails that will allow you to login.

The first will be from [a.lehmann@auckland.ac.nz](mailto:a.lehmann@auckland.ac.nz) and will provide you with a school login name.

The second will be from [ligginsinfo@auckland.ac.nz](mailto:ligginsinfo@auckland.ac.nz) asking you to confirm your email address.

When you receive this, please click on the top link which will take you to a confirmation page.

Once you have gone through to the confirmation page on the LENS wiki, click on login on the left hand side and enter the user name that you have been sent.

Click the "email password" button. Await your password.

This is now your school login and password. The password has been generated randomly. You can change this after you login by going to "my preferences".

If you have any problems, or need someone to talk you through this process please email [ligginsinfo@auckland.ac.nz](mailto:ligginsinfo@auckland.ac.nz) and Anna Lehmann will be available to assist you.

## Posting Seminar Questions

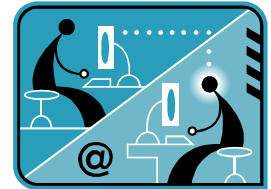
Students who want to ask questions to be addressed in the seminar question time will be able to use the wiki question page or the on-line live chat (only available during the seminar).

To post a question to the wiki.....

..... go to the [Biotechnology and Cancer Seminar Home Page](#) and click on the link "Post a Question for the Seminar"

[Click here](#) to see a movie that takes you through how to add a question to the wiki.  
OR [click here](#) to find a print version of how to edit the wiki.

**Note – you can only edit the wiki if you are a registered user.**



**Next week we will explain how to use the online chat to ask questions.**

## "I Love My Heart" Year 7-10 education event from LENS TV



Hopefully we all love our heart!  
How does it work, why it is so important?  
**How do you love it for life?**



This science and health education event for Year 7-10 students will take place on May 15th, 2009. Students will be taken on a dynamic journey of discovery, explaining just how amazing the human heart is, how it functions, what heart disease is, and how to look after your heart. The programme will use live demonstrations of heart rate, blood pressure and EKG, audio-visuals, models and audience participation providing students with a take home message that is relevant to their lives and their futures.

[Click here](#) for more information and to register your school to participate in this event.

# LENScience

*Bringing Schools and Scientists Together*

<http://lens.auckland.ac.nz>