

The Issue

Teacher Presentation Slides

Learning Objective 2

Te Maki Toto Vene (T2): E Manamanata no Toku Iti Tangata

© Jacquie Bay and Helen Mora 2016

© University of Auckland, Cook Islands Ministry of Education and Cook Islands Ministry of Health 2016

www.lenscience.auckland.ac.nz



Identifying the Issue



Te Maki Toto Vene (T2): E Manamanata no Toku Iti Tangata

© Jacquie Bay and Helen Mora 2016

© University of Auckland, Cook Islands Ministry of Education and Cook Islands Ministry of Health 2016



Identifying the Issue



Think: answer
each question ...



Identifying the Issue



Think: answer
each question ...

... then **Pair** (2 minutes) ...





Identifying the Issue



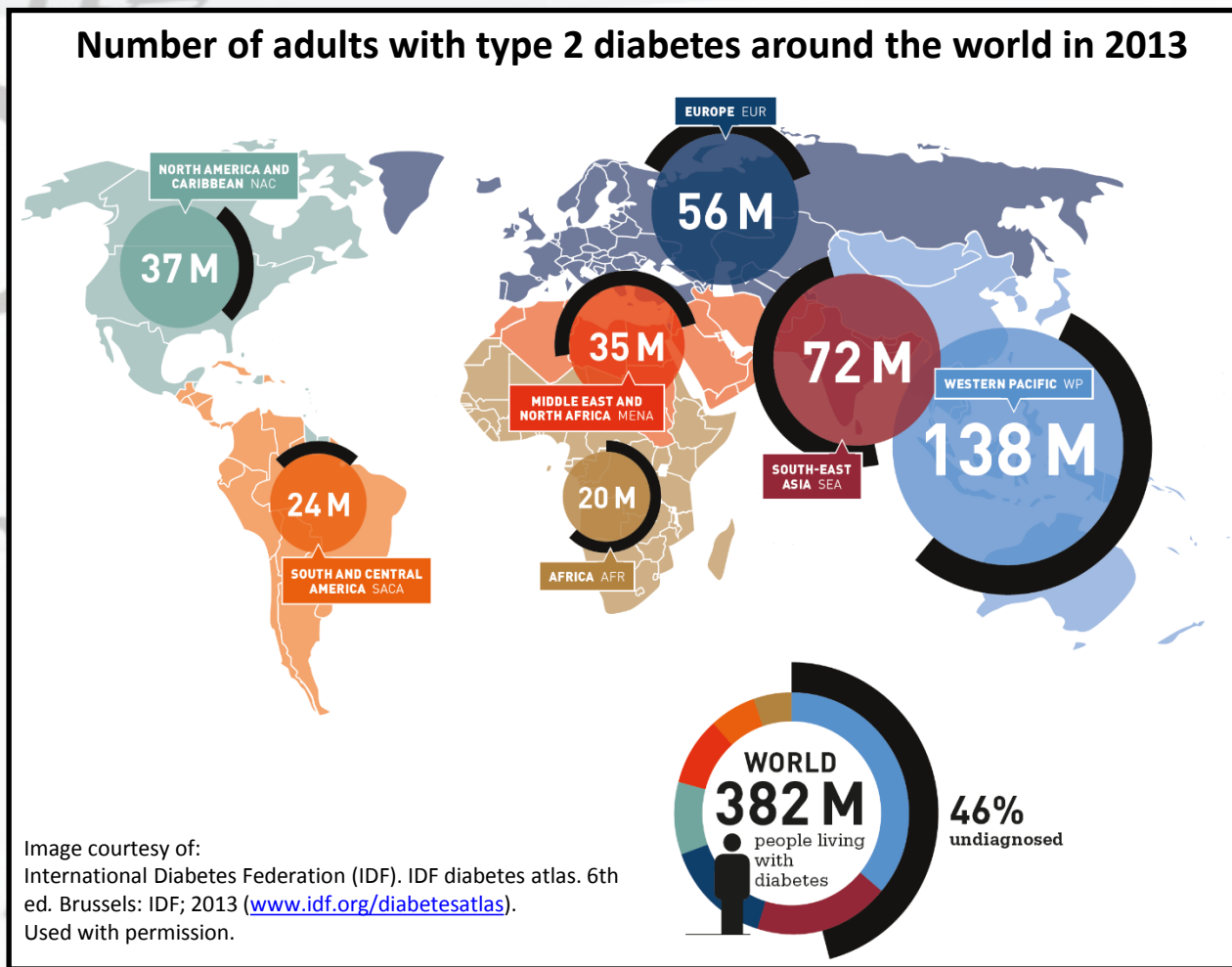
Think: answer each question ...

... then **Pair** (2 minutes) ...



... then **Share** (3 minutes) your ideas.

Resource 1: What is the issue?

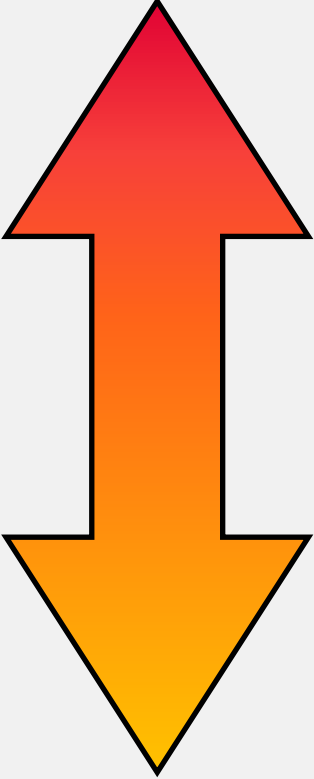


Te Maki Toto Vene (T2): E Manamanata no Toku Iti Tangata

© Jacquie Bay and Helen Mora 2016

© University of Auckland, Cook Islands Ministry of Education and Cook Islands Ministry of Health 2016

Resource 1: What is the issue?

Region of the world	Number of people with type 2 diabetes	Most
		
South-East Asia (SEA)		
	20 million	

Resource 1: What is the issue?

Region of the world	Total population (millions)	Population aged 20–79 years (millions)	People aged 20–79 years with type 2 diabetes (millions)	% of 20–79 year-olds with type 2 diabetes
Africa (AFR)	888	408		
Europe (EUR)	907	658		
Middle East & North Africa (MENA)	656	375		
North America & Caribbean (NAC)	496	335		
South & Central America (SACA)	475	301		
South-East Asia (SEA)	1460	883		
Western Pacific Region (WPR)	2278	1613		

Te Maki Toto Vene (T2): E Manamanata no Toku Iti Tangata

© Jacquie Bay and Helen Mora 2016

© University of Auckland, Cook Islands Ministry of Education and Cook Islands Ministry of Health 2016

Resource 3: What is the issue?

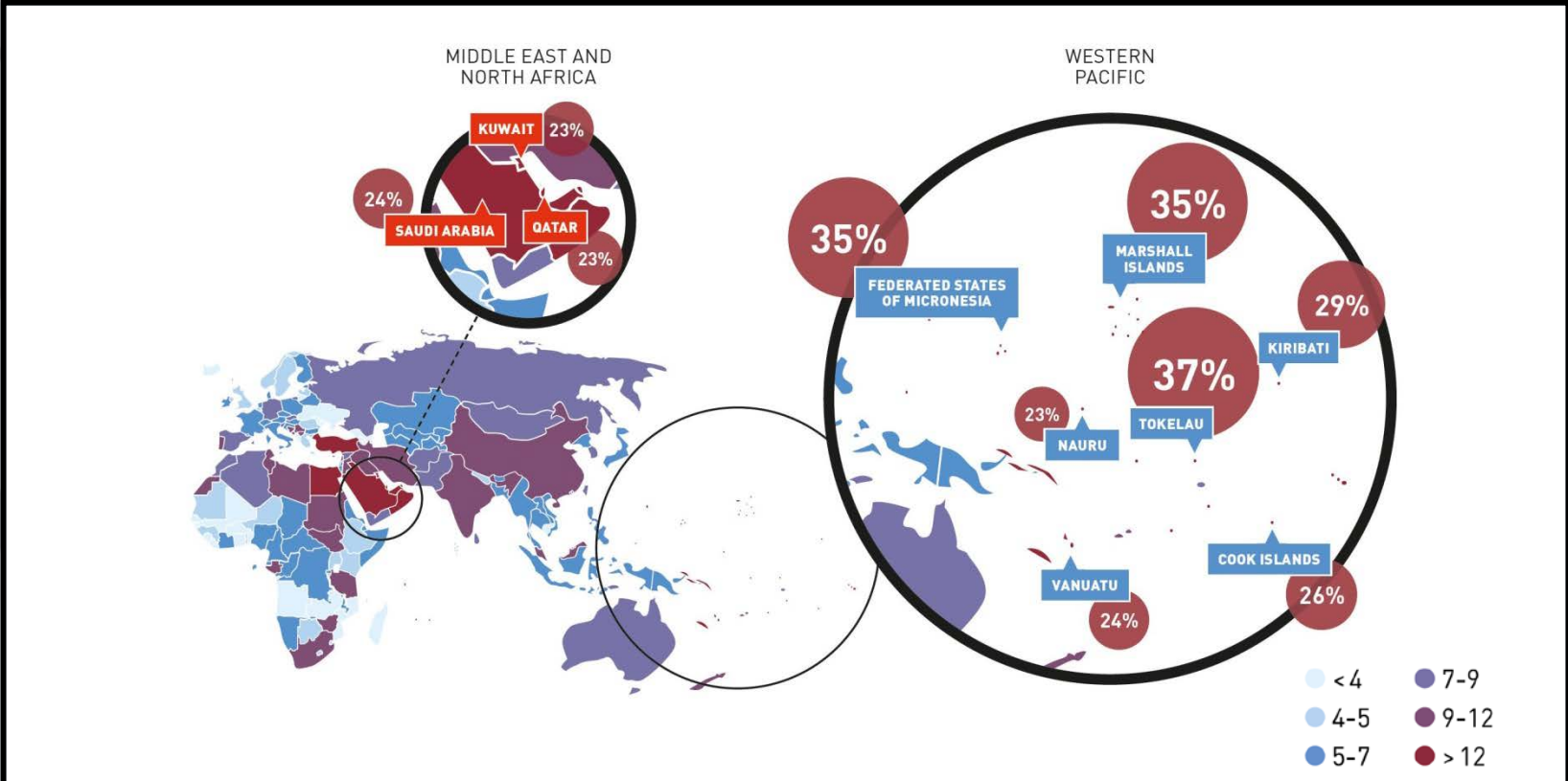


Figure 3.5: Top 10 countries/territories for the comparative prevalence of diabetes in the adult population (aged 20–79 years), 2013. Image courtesy of International Diabetes Federation (IDF). IDF diabetes atlas. 6th ed. Brussels: IFD; 2013 (www.idf.org/diabetesatlas). Used with permission.

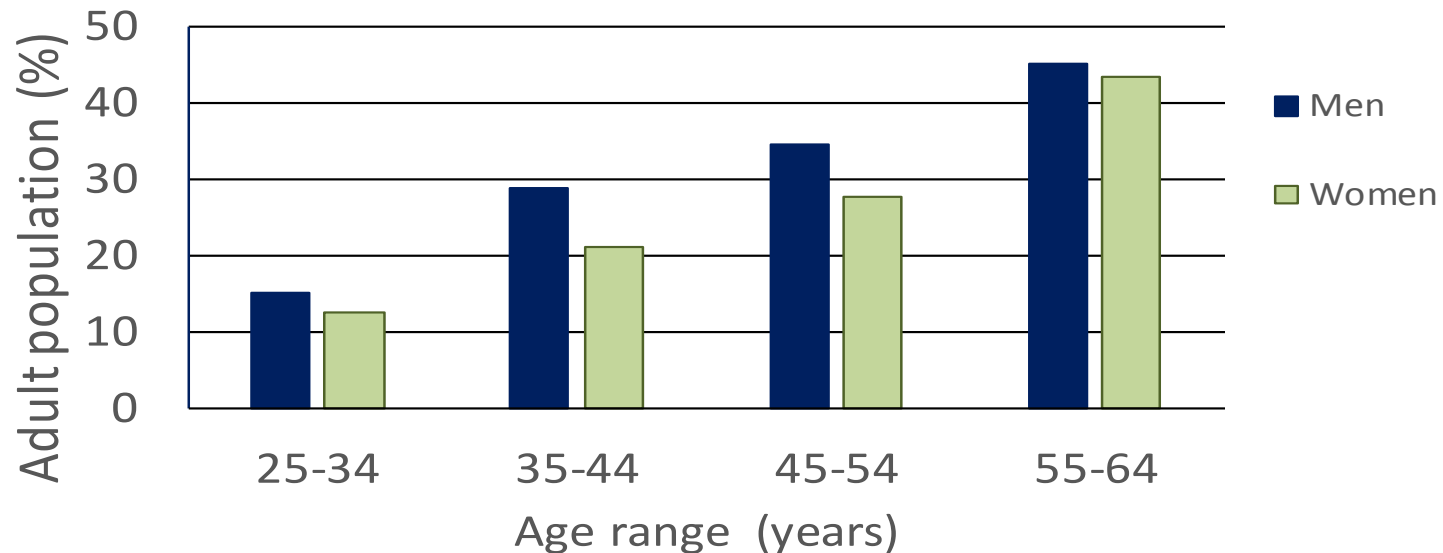
Resource 3: What is the issue?

Country/territory	Region	Prevalence of type 2 diabetes (%)	Rank
			1
Marshall Islands	Western Pacific	35	2=
			2=
			4
			5
			6=
			6=
			7=
			7=
			7=

Resource 4: What is the issue?

Prevalence of diabetes in the Cook Islands adult population (2004)

Data from: Cook Islands NCD risk STEPS report (Tairea et al., 2011)



Resource 5: What is the issue?

Diagnosed diabetes in New Zealand, by ethnic group and gender

Data from: New Zealand Ministry of Health (2012)

	Adults with diagnosed diabetes (%)			Estimated number of adults with diagnosed diabetes
	Total	Men	Women	
Total NZ Population	5.5	6.0	5.0	193,000
Māori	7.3	7.9	6.8	33,000
Pacific	10.2	10.6	9.9	21,000
Asian	6.2	8.4	4.2	23,000
European/other	4.7	4.9	4.5	130,000

Resource 5: What is the issue?

Age-adjusted rate ratios for diagnosed diabetes in New Zealand

Data from: New Zealand Ministry of Health (2012)

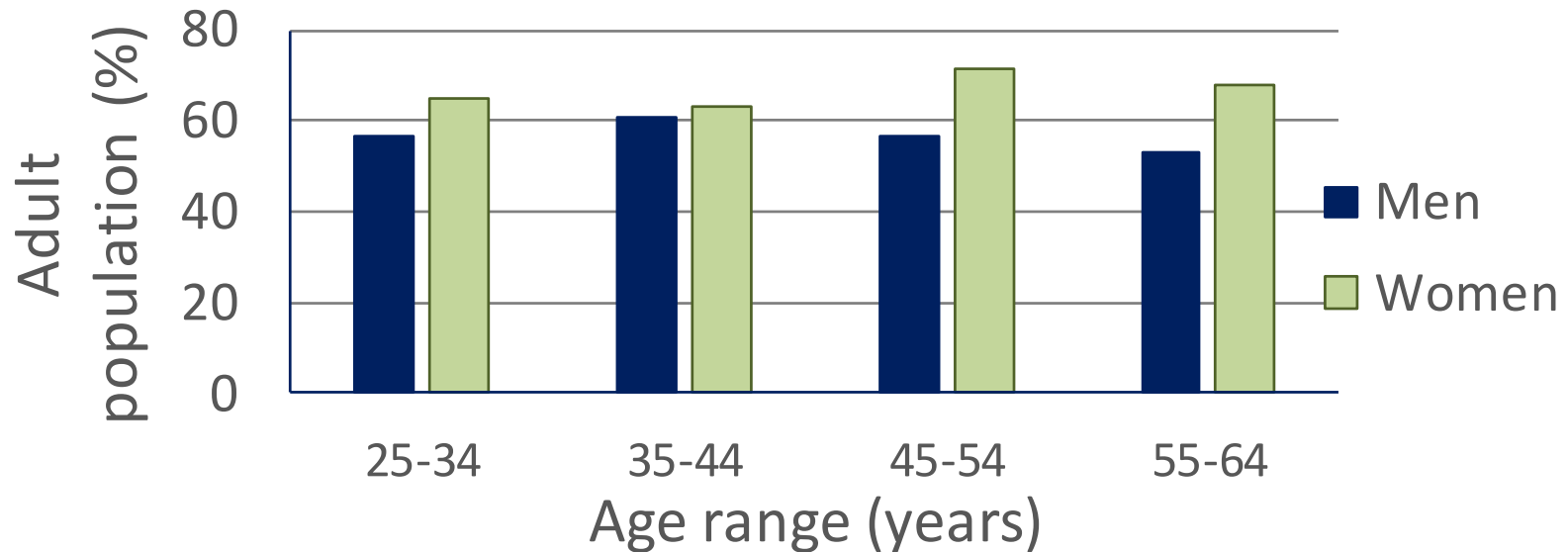
Age-adjusted comparisons of each ethnic group with other ethnic groups

Group of interest	Comparison group	Total	Men	Women
Māori	Non-Māori	2.1	2.0	2.1
Pacific	Non-Pacific	3.4	3.3	3.5
Asian	Non-Asian	1.7	2.2	1.2

Resource 6: What is the issue?

Prevalence of obesity in the Cook Islands adult population (2004)

Data from: Cook Islands NCD risk STEPS report (Tairea et al., 2011)



Resource 6: What is the issue?

Prevalence of obesity in New Zealand adults (15 years and over) by ethnicity

Data from New Zealand Ministry of Health (1997 to 2015)

