

# Symptoms of Diabetes

## Student Presentation Slides

### Learning Objective 5 | Diabetes Mellitus

Images in this presentation are either used under license from istockphoto.com or thinkstockphotos.com, or are original images created by the Liggins Institute.

Te Maki Toto Vene (T2): E Manamanata no Toku Iti Tangata

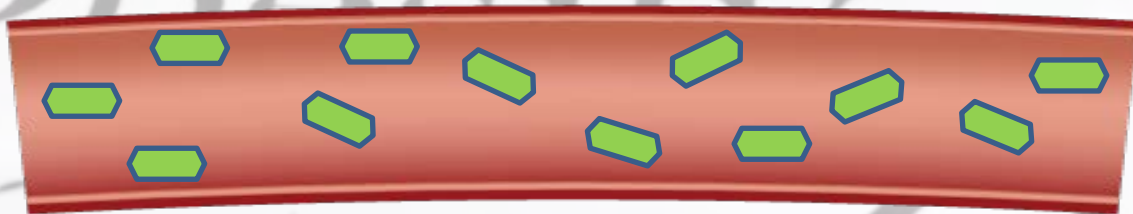
© Jacque Bay and Helen Mora 2016

© University of Auckland, Cook Islands Ministry of Education and Cook Islands Ministry of Health 2016

[www.lenscience.auckland.ac.nz](http://www.lenscience.auckland.ac.nz)

# What are the symptoms of diabetes?

Diabetes is a disease that occurs when we have too much glucose (sugar) in the blood.



# Symptoms of diabetes

- Feeling tired and lacking energy
- Feeling thirsty
- Going to the toilet often
- Getting infections frequently
- Getting infections which are hard to heal
- Poor eyesight or blurred vision
- Often feeling hungry

# Problems caused by diabetes

SPS  
SD 3



Te Maki Toto Vene (T2): E Manamanata no Toku Iti Tangata

© Jacquie Bay and Helen Mora 2016

© University of Auckland, Cook Islands Ministry of Education and Cook Islands Ministry of Health 2016

# Problems caused by diabetes

SPS  
SD 4

Strokes → can lead to death



Te Maki Toto Vene (T2): E Manamanata no Toku Iti Tangata

© Jacquie Bay and Helen Mora 2016

© University of Auckland, Cook Islands Ministry of Education and Cook Islands Ministry of Health 2016

# Problems caused by diabetes

SPS  
SD 5



Eye damage which  
can lead to blindness

Normal  
vision



Images courtesy of the National Eye Institute, the US  
National Institute of Health [www.nih.gov](http://www.nih.gov)

Te Maki Toto Vene (T2): E Manamanata no Toku Iti Tangata

© Jacquie Bay and Helen Mora 2016

© University of Auckland, Cook Islands Ministry of Education and Cook Islands Ministry of Health 2016



# Problems caused by diabetes

SPS  
SD 6

Eye damage which  
can lead to blindness

Normal  
vision



Diabetic  
retinopathy



– a common diabetic eye disease

Images courtesy the National Eye Institute, the US  
National Institute of Health [www.nih.gov](http://www.nih.gov)

# Problems caused by diabetes

SPS  
SD 7



Heart damage which can lead to a heart attack

Te Maki Toto Vene (T2): E Manamanata no Toku Iti Tangata

© Jacquie Bay and Helen Mora 2016

© University of Auckland, Cook Islands Ministry of Education and Cook Islands Ministry of Health 2016



# Problems caused by diabetes

SPS  
SD 8



Kidney damage and potentially  
kidney failure

Te Maki Toto Vene (T2): E Manamanata no Toku Iti Tangata

© Jacquie Bay and Helen Mora 2016

© University of Auckland, Cook Islands Ministry of Education and Cook Islands Ministry of Health 2016

# Problems caused by diabetes

SPS  
SD 9



Reduced blood supply to hands and feet can lead to the loss of limbs

Te Maki Toto Vene (T2): E Manamanata no Toku Iti Tangata

© Jacqui Bay and Helen Mora 2016

© University of Auckland, Cook Islands Ministry of Education and Cook Islands Ministry of Health 2016

# Problems caused by diabetes

SPS  
SD 10

- Strokes → can lead to death
- Eye damage → blindness
- Heart damage → heart attack
- Kidney damage → kidney failure
- Reduced blood supply to hands and feet  
→ loss of limbs



# Problems caused by diabetes

SPS  
SD 11

- Strokes → can lead to death
- Eye damage → blindness
- Heart damage → heart attack
- Kidney damage → kidney failure
- Reduced blood supply to hands and feet  
→ loss of limbs

WHY?

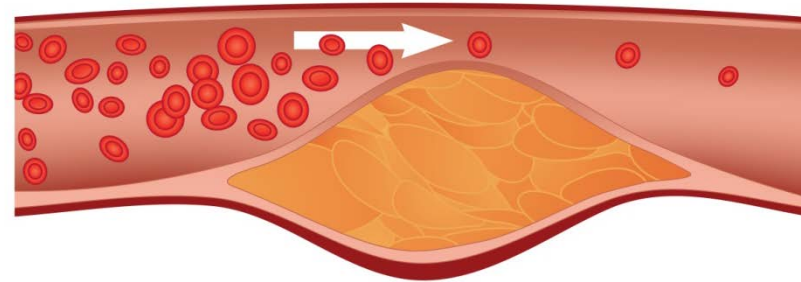
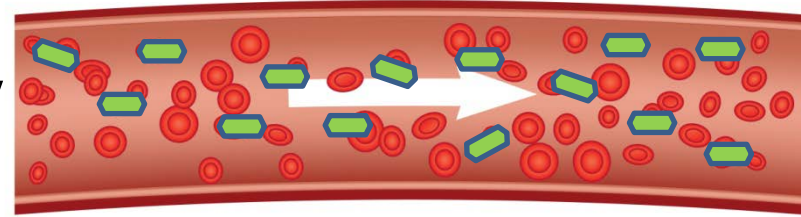


# What causes these problems?

SPS  
SD 12

Some of the glucose that remains in the bloodstream is absorbed by the cells lining the blood vessels.

These cells swell up, the blood vessels become leaky and may become blocked. People with diabetes have a high risk of 'plaques' forming, and these may block blood vessels.



Diabetes **causes** the damage of small blood vessels. This **results** in other diseases – in the eyes, kidney failure, heart disease.