



THE UNIVERSITY OF
AUCKLAND
Te Whare Wānanga o Tāmaki Makaurau
NEW ZEALAND

Auckland Law School

Undergraduate Prospectus 2022

law.auckland.ac.nz



No.1
New Zealand
University¹



No.1
Global Impact
Ranking²



No.1 for
employability³



Nau mai, haere mai

A warm welcome to Auckland Law School

Your legal journey starts here

When you embark on a Law degree you will gain skills and knowledge that will equip you for a wide range of careers within the legal profession and beyond. You will develop analytical, communication and research skills. You will also build your understanding of legal ethics, professional responsibility and the role that law plays in society.

Auckland Law School is the top-ranked law school in Aotearoa New Zealand and one of the best law schools in the world.* We are committed to improving access to justice for all Kiwi communities through teaching, research, service and engagement. Many of our staff have contributed to significant advances in the Aotearoa justice system. Our graduates can be found in the world's best law firms, the judiciary, in non-governmental organisations and many successful companies around the world.

Auckland Law School offers one undergraduate degree – the Bachelor of Laws. High-achieving students may be invited to transfer to the Bachelor of Laws (Honours) programme after the first two years of study. You may also complement your legal study through a conjoint degree.

As a student at Auckland Law School you will benefit from the largest range of undergraduate law courses available at any New Zealand law school; the expertise of some of this country's leading law scholars; and resources like the purpose-built Davis Law Library. You'll be part of a tight-knit community, with fantastic social and support networks available and lecturers who are invested in your success.

Te Rākau Ture, our Māori law students' association, have just celebrated their 30th anniversary. They provide a wonderful social and academic support network for taurira Māori – your whānau away from whānau.

Our Pacific Island Law Students' Association (PILSA) work closely with other Pacific associations, building strong community links and keeping Pasifika values at the forefront of their operations.

From the Auckland University Law Revue to student competitions, from social and sports events to seminars and workshops, there are countless opportunities to participate, meet other law students and forge life-long friendships.

We welcome your interest in Auckland Law School and look forward to having you join us in 2022.

**Ko tō ringa ki te ture, ko tō ngākau ki te pono.
May your hands possess the law, and your heart possess the truth.**

(An adaptation of Sir Āpirana Ngata's 'E tipu, e rea'. Sir Āpirana gained his Bachelor of Laws from Auckland Law School in 1896 – he was the first Māori to complete a degree at a New Zealand university.)



PROFESSOR PENELOPE MATHEW
Dean, Auckland Law School
The University of Auckland

*Times Higher Education and QS World Rankings 2020



Contents

02 Welcome

About the Bachelor of Laws	4
Degree structure	6
Conjoint degree options	6
Career pathways	9
Additional information	9
Entry requirements	10
How to apply	11

Cover attributions

1. *Times Higher Education and QS World Rankings 2020*
2. *Times Higher Education University Impact Rankings 2020*
3. *QS World Rankings Graduate Employability, number one in NZ and 59th Worldwide in 2020*

About the Bachelor of Laws

The Bachelor of Laws (LLB) is a four-year (eight-semester) degree if you are studying full-time. It is studied in four parts (Parts I-IV). Unlike other undergraduate degrees, the LLB does not have a major attached to it. Everyone who earns an LLB degree gains a broad background in the law.

Bachelor of Laws Part I

For first year Law, you will apply for LLB Part I and one other bachelors degree programme to satisfy the Law Part I requirement for five non-Law courses.

If you gain selection into LLB Part II you can continue studying your second degree as a conjoint with Law. A conjoint degree gives you the opportunity to acquire a wider knowledge base and broaden your career opportunities. You can focus on non-Law subjects of your choice to supplement the area of law you wish to specialise in or apply complementary legal knowledge to another field. Find more information and explore our wide range of conjoint options on page 6.

Alternatively, Part II students may wish to continue only with Law courses towards a single LLB degree and not continue with their other bachelors degree programme.

If you complete LLB Part I but are not selected for LLB Part II you will probably want to pursue an alternative qualification. As you will have already completed courses for another degree in your first year, you will have laid a good foundation for further study and will in most cases be able to credit your first year Law courses to your alternative degree. You may also continue with your other degree and reapply to start LLB Part II in Semester Two the following year.

Graduate admission to Part I

University graduates who wish to apply for the LLB degree can view their options on our website.

www.law.auckland.ac.nz/apply-graduate

If you demonstrate legal aptitude (eg, by having a good Law School Admission Test (LSAT) score) you can apply for admission to LLB Part I and LLB Part II concurrently. You should email a student adviser in the Law School to discuss the best entry pathway for you.

undergradlaw@auckland.ac.nz.

Bachelor of Laws Part II

Admission to LLB Part II is limited and competitive. Not all students who gain entry into Part I will be able to continue to Part II.

There is no direct entry from secondary school into LLB Part II.

All applicants must go through a selection process. You will be selected on the basis of academic merit. Your Part I results as well as your results from your other university courses will be used to assess whether or not you will be selected for Part II (see Part II entry requirements on our website).

www.law.auckland.ac.nz/apply-llb-ii

Our Undergraduate Targeted Admission Scheme (UTAS) reserves a number of places in the LLB Part II programme for eligible taurira Māori, Pasifika students and applicants from some equity groups. If you are eligible for UTAS, have completed LLB Part I and believe you can achieve at least a C+ average, you may consider applying for LLB Part II through the Scheme.

www.law.auckland.ac.nz/utas

Graduate admission to LLB Part II

If you are a graduate who has completed the LLB Part I equivalent at another New Zealand law school, you will be selected on the basis of your grades in LAW 121G (Law and Society), LAW 131 (Legal Method) and LAW 141 (Legal Foundations), or their equivalents at another New Zealand law school, plus your best 75 points (or equivalent) from your most recent year of university study.

Students who have completed the LLB Part I equivalent at another New Zealand law school should email the LLB Part I Student Adviser for application advice.

undergradlaw@auckland.ac.nz.



We're NZ's leading faculty of Law*



The Davis Law Library is the largest law library in New Zealand



Situated in the heart of the Legal Precinct, next to the High Court and leading law firms



Clubs and associations

Bachelor of Laws (Honours)

The Bachelor of Laws (Honours) (LLB(Hons)) gives high-achieving LLB students the opportunity to dig deeper into an area of law and to hone their research and dissertation writing skills.

Students who have gained a B+ average or higher in their Law courses in Parts I and II of the LLB programme will be invited to transfer to the LLB(Hons) programme to complete Parts III and IV. This will usually be at the end of the second year of study – or for conjoint students, at the end of the third year of study subject to meeting requirements.

The LLB(Hons) programme requires students to enrol in one additional semester, on top of their LLB programme, to complete a double-semester seminar course and a dissertation.

Throughout the programme, students will need to maintain at least a B+ average.

The LLB(Hons) is a total of 540 points and involves a student completing the LLB programme and an additional 20-point honours seminar course (usually as part of their Part III year) and a 40-point dissertation in the semester immediately following their Part IV year.

It will take a minimum of nine semesters to complete all of the requirements for

the LLB(Hons) degree, unless a student is completing a conjoint degree. In that case it will take a minimum of 11 semesters. The number of semesters required can be reduced by one if the dissertation is completed through Summer School immediately following their Part IV year.

Please note: Entry requirements may change each year.

Find out more about individual courses online.

www.law.auckland.ac.nz/ugcourses

Delayed application

If students do not get into Honours by invitation after the completion of their Part II courses but their overall performance improves in later years, they can apply for Honours via the Law School Student Centre in early December of any year after successful completion of Part II.

The application will be approved if the student's Grade Point Average over all of their LLB courses is above the Honours entry standard and there are places available.

Transfer of Credit

You can apply for transfer of credit for tertiary courses completed elsewhere as part of your Application for Admission. If you have completed study at another New Zealand university, you can email a student adviser to find out the transfer credit you may be eligible for. undergradlaw@auckland.ac.nz

*One degree,
unlimited potential
at New Zealand's
top-ranked law
school.*

Find out more

For more details about this programme, visit

auckland.ac.nz/llb

"I saw the ways in which law can help people and I knew I wanted to be a part of it. I chose Auckland Law School due to its great reputation and wide variety of course topics."

Yousif Ali Al-Kalisy

Student: Bachelor of Laws



auckland.ac.nz/gradvids



Degree structure

The LLB is made up of 480 points. It is a combination of compulsory law courses, elective law courses, non-Law courses from another degree programme and one General Education course.

LLB Part I

Part I students usually take LAW 121G (Law and Society) in Semester One. If you gain a B- (C+ for students applying under UTAS) or better in LAW 121G you can progress to LAW 131 (Legal Method) and Law 141 (Legal Foundations) in Semester Two.

Please note: These grades may change each year.

LAW 121G is offered in both Semester One and Two of each year, whereas LAW 131 and LAW 141 are offered only in Semester Two.

You will be required to choose five non-Law courses totaling 75 points as a foundation for your other bachelors degree.

Find out more about individual courses at law.auckland.ac.nz/ugcourses

LLB Part II

LLB Part II consists of five compulsory courses, which can be completed in the second year of study for those full-time students pursuing an LLB as a single degree, or across the second and third year of study for those completing conjoint degrees.

LLB Parts III and IV

In addition to taking compulsory Part III and IV papers, students are allowed to select elective courses. We offer the largest range of law elective courses in New Zealand, with papers relating to Corporate and Commercial Law, Public, Criminal, Family, International and Environmental Law. It is important to plan ahead as not all elective courses are offered every year.

LLB conjoint structure

Apart from the Bachelor of Engineering (Honours) and Bachelor of Advanced Science (Honours), conjoint programmes with Law comprise 405 points of Law courses, 255 points of courses from another degree, and a 15-point General Education course.

The BAdvSci(Hons)/LLB comprises 405 points of Law courses and 375 points of Science courses. The BE(Hons)/LLB comprises 405 points of Law courses and 420 points of Engineering courses.

There are several ways of structuring conjoint degrees. We advise you to consult with both faculties concerned before enrolling for your courses.

Explore your conjoint options below.

Double your options

Conjoint degrees enable you to complete the requirements of two degrees simultaneously, only adding one year of study to the longest degree in most cases. Admission can be in the first year or at any point before you have passed no more than 270 points for either component degree. Continuation depends on you maintaining your academic record to a set standard.

Conjoint degrees with Law

Bachelor of Arts/ Bachelor of Laws (BA/LLB)

The BA/LLB lets you choose from a wide range of subjects offered by the faculties of Arts and Law. You can create your own combination of subjects, provided they comply with the course regulations of both degrees.

Bachelor of Commerce/ Bachelor of Laws (BCom/LLB)

If you intend to practice in commercial, taxation and company areas, then a BCom/LLB is an excellent choice. You will also gain a broad background suitable for a position in management or public administration.

Bachelor of Design/ Bachelor of Laws (BDes/LLB)

Contemporary design places importance on the social, political and cultural impact of any solution. The BDes/LLB strengthens this through the advanced study of legal implications. You will develop a strong knowledge of law and public responsibility and explore how these factors relate to designing for multiple industries.

Bachelor of Engineering (Honours)/ Bachelor of Laws (BE(Hons)/LLB)

The BE(Hons)/LLB lets you combine legal and professional engineering training. This conjoint is well suited to a career in management within

a large engineering firm or in fields such as resource management, intellectual property and information systems.

Bachelor of Fine Arts/Bachelor of Laws (BFA/LLB)

This BFA/LLB conjoint degree allows you to explore and develop your personal art practice alongside a strong knowledge of law and public responsibility.

Bachelor of Global Studies/ Bachelor of Laws (BGlobalSt/LLB)

With a BGlobalSt/LLB conjoint you can complement your legal skills and knowledge with the study of global issues to take on the challenges of global politics, law and human security. You will develop employment skills such as leadership, teamwork, public speaking, critical thinking, research and intercultural communication.

Bachelor of Health Sciences/ Bachelor of Laws (BHSc/LLB)

The BHSc/LLB offers you a sound introduction to law and the healthcare sector. This could lead to a career in medical law, health policy, health management or healthcare ethics.

Bachelor of Music/ Bachelor of Laws (BMus/LLB)

If you want a degree that provides you with two distinct skill sets, the BMus/LLB is an excellent

choice. Follow your passion for music while gaining valuable analytical, communication and research skills – and gain an understanding of legal ethics, professional responsibility and the role law plays in society.

Bachelor of Property/ Bachelor of Laws (BProp/LLB)

The conjoint BProp/LLB degree will provide you with a sound background for work as a specialist legal adviser or for a management position within the property industry. In addition to the legal skills and knowledge gained from the LLB degree, you will develop an understanding of property valuation, investment, management and marketing.

Bachelor of Science/ Bachelor of Laws (BSc/LLB)

If you have an aptitude for science, a conjoint BSc/LLB degree gives you an excellent opportunity to construct a programme of study that can lead to a career in environmental law, intellectual property law, or science. This could include the fields of biotechnology, information technology and forensic science.

Bachelor of Advanced Science (Honours)/Bachelor of Laws (BAdvSci(Hons)/LLB)

The BAdvSci(Hons)/LLB allows you to combine legal acumen with advanced disciplinary knowledge and scientific research skills.

Sample LLB degree structure

Year one/Part I	Year two/Part II	Year three/Part III	Year four/Part IV
LAW 121G Law and Society (15 points)	LAW 298 Legal Research, Writing and Communication (10 points)	LAW 301 Land Law (20 points)	LAW 498 Advanced Legal Research, Writing and Communication (0 points)
LAW 131 Legal Method (15 points)	LAW 201 Criminal Law (30 points)	LAW 306 Equity (20 points)	Law elective courses (110 points)
LAW 141 Legal Foundations (15 points)	LAW 211 Public Law (30 points)	LAW 316 Jurisprudence (15 points)	
General Education (15 points)	LAW 231 Law of Torts (30 points)	LAW 458* Legal Ethics (10 points)	
Other degree (60 points)	LAW 241 Law of Contract (30 points)	Law elective courses (55 points)	

*Although Law 458 is an elective course for the LLB, the Council for Legal Education (CLE) requires students intending to be admitted to the bar to take this course.

Sample LLB conjoint degree structure (does not apply to the BE(Hons)/LLB) and BAdvSci(Hons)/LLB)

There is considerable flexibility in planning conjoint programmes. The sample LLB conjoint degree structure is only one of several possible plans.

Year one/Part I	Year two/Part II	Year three/Part II	Year four/Part III	Year five/Part IV
LAW 121G Law and Society (15 points)	LAW 298 Legal Research, Writing and Communication (10 points)	LAW 231 Law of Torts (30 points)	LAW 301 Land Law (20 points)	LAW 498 Advanced Legal Research, Writing and Communication (0 points)
Other degree (75 points)	LAW 201 Criminal Law (30 points)	LAW 241 Law of Contract (30 points)	LAW 306 Equity (20 points)	Law elective courses (110 points)
Other degree (15 points) Can be taken in years 1–5**	LAW 211 Public Law (30 points)	Other degree (75 points)	LAW 316 Jurisprudence (15 points)	Other degree (30 points)
LAW 131 Legal Method (15 points)	Other degree (45 points)		LAW 458* Legal Ethics (10 points)	
LAW 141 Legal Foundations (15 points)	General Education (15 points)		Law elective courses (55 points)	
			Other degree (15 points)	

*Although LAW 458 is an elective course for the LLB, the Council for Legal Education (CLE) requires students intending to be admitted to the bar to take this course.

**The remaining non-Law course (15 points), can be taken in any of Years 1–5, including Summer School. (i) This conjoint plan allows completion of a conjoint degree programme in five years, but it involves a heavier than normal load in four of the five years. There is no need to complete within the minimum timeframe, and students may wish to enrol for a more manageable load by extending the overall timeframe to five years plus one semester (or longer). (ii) A BE(Hons)/LLB conjoint degree satisfies the requirements of two professional bodies. Students should expect this conjoint to take six years, and are advised to consult with the Faculty of Engineering in the first instance. (iii) Students should expect the BAdvSci(Hons)/LLB to take seven years, and are advised to consult with the Faculty of Science in the first instance.

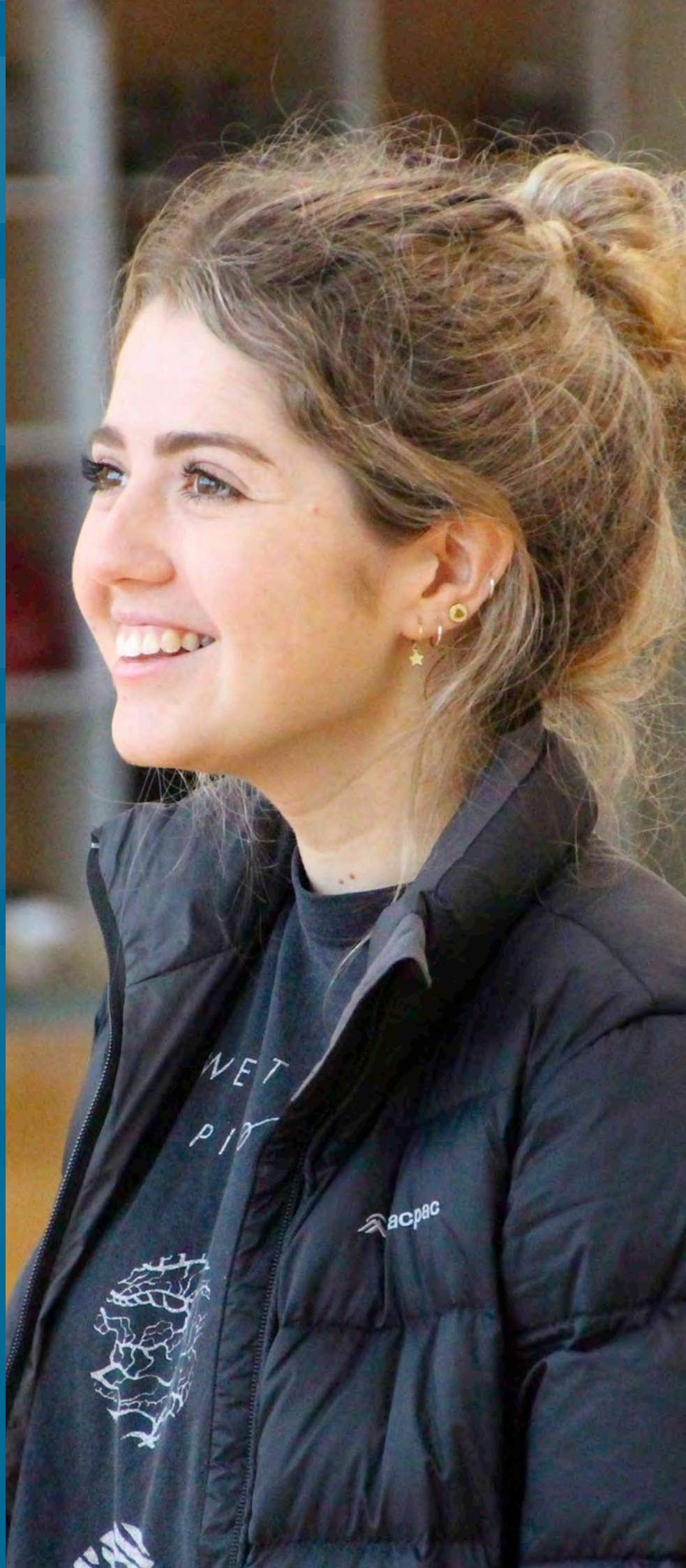
“A Law degree appealed to me as a medium through which anyone can serve others in whatever way they choose. Whether it’s through changing the narrative in the courts, or the decisions of Parliament there are so many opportunities a Law degree offers to cultivate change at a prodigious level.”

“I lived in Hamilton before moving to Auckland for university. At first, Auckland appeared very daunting. However, being in a first-year hall really encouraged me to settle in and make friends across all degrees at the University and soon the city appeared much smaller.”

“The most memorable part of this journey has been the friends I have made. Studying Law allows you to engage with like-minded people who typically have similar goals. This has created an environment that provides support academically and socially during our studies. I also really enjoyed being a part of the Auckland Law Revue. It was a great way to meet new people and also provided a creative outlet for us all!””

Olivia Thomas

Student: Bachelor of Arts/Bachelor of Laws conjoint



Career pathways

Where will your Law degree take you?

A Law degree will arm you with many transferable skills, including knowledge of the law and its implications, a sense of justice and public responsibility, analytical, research and communication skills, and an ability to work under pressure.

A degree from the University of Auckland Law School is well-respected. In any given year, about half of our graduates take up positions in New Zealand law firms, while the other half begin their careers in a wide range of fields. These include accounting and consulting; business and industry; national and local government; teaching, research and journalism; and international, environmental and other non-governmental areas.

Our graduates can be found practising law in New Zealand and worldwide – many of our former students work for leading law firms in London, New York, Sydney, Hong Kong, Singapore, and other major cities.

Some of our top students go on to study our LLM, MTaxS and PhD degrees. Auckland Law School offers the most extensive postgraduate programme in the country.

Our students regularly win scholarships and prizes to continue their studies overseas. Some of our recent graduates are now pursuing higher

degrees at Oxford, Cambridge, Harvard, Yale, Columbia, and other top overseas universities.

Becoming a barrister and solicitor

To be admitted to the bar you must complete a three-month Professional Legal Studies course after completing the LLB or LLB(Hons) degree. There are currently two providers of this course:

- The Institute of Professional Legal Studies
- The College of Law (New Zealand)

Careers team

Whether you're not sure what you want to do when you graduate or you have a clear path in mind but need some help to get there, our in-house careers team are here to support you. They can help you engage with industry, increase your employability skills and enhance the knowledge and skills that are acquired in the classroom to gain employment upon leaving the Law School. They will ensure that you are adequately educated on career paths available to Law School graduates. They also run programmes throughout the year.

Career Explore Programme

The Career Explore programme is designed to help you find out what a career in law could look like or encourage you to think about careers outside of law. It gives you some practical advice on CVs and cover letters, interview and networking techniques, and a chance to engage with industry and carry out mock interviews with external organisations.

Women's Mentoring Programme

The Women's Mentoring Programme at Auckland Law School matches female law students with women working in the industry. The objective of the Women's Mentoring Programme is to offer professional development opportunities for female students with the chance to benefit from the experience and industry knowledge of a mentor.

New Zealand Law Students' Career Guide

Check out this guide and explore the wide range of careers available to you through a law degree.

www.lawcareerguide.ac.nz

Additional information

Scholarships

Each year Auckland Law School offers scholarships and awards to students which can help with the cost of study. Regardless of your background or where you live, you may be eligible for a scholarship.

For a full list of scholarships, visit our website.

www.scholarships.auckland.ac.nz

Open Day 2021

Experience life at Auckland Law School for yourself at our annual Open Day! Attend lectures, meet staff and students, and experience our vast range of courses and career opportunities available on 28 August 2021.

For more information visit www.openday.ac.nz

Orientation

Discover all you need to know about the facilities and services available, meet staff, course directors, join our student clubs and more.

Week beginning 21 February 2022 (Semester One begins 28 February)

Student clubs and associations

Being involved in our clubs and associations gives you the opportunity to meet like-minded people, gain new skills and develop your social and professional networks.

Get a head start and connect with our clubs now. For more information visit

www.law.auckland.ac.nz/clubs

Law student exchange

Study overseas and immerse yourself in another culture, attend lectures on the other side of the world and enhance your personal skills, academic potential and employability by completing part of your degree at other universities while earning credits towards your University of Auckland Law degree.

For more information visit www.law.auckland.ac.nz/student-exchange

FACEBOOK

Like us on Facebook
facebook.com/akllawschool



LINKEDIN

Follow us on LinkedIn
linkedin.com/showcase/uoaalawschool



YOUTUBE

Watch us on YouTube
law.auckland.ac.nz/youtube



Frequently asked questions

Got a burning question? See if someone else has already asked. law.auckland.ac.nz/questions

- For a wide range of accommodation options visit www.accommodation.auckland.ac.nz
- To check out our scholarship opportunities visit www.scholarships.auckland.ac.nz

Entry requirements

LLB Part I

If you have achieved the New Zealand University Entrance (UE) standard, and are admitted to another programme at the University, you will be admitted to LLB Part I.

If you are a graduate, or already enrolled in another University of Auckland bachelors degree programme, you will be admitted to LLB Part I.

Entry requirements for admission into conjoint programmes with Law are higher than those for single degree programmes. See page 6 for more information on conjoint degrees with Law including a list of available conjoints.

LLB Part II

Places in LLB Part II are limited and all applicants must go through a selection process. There is also an enrolment limit on each of the LLB Part II courses.

To be considered for selection into LLB Part II, you need to have:

- Passed LAW 121G with at least a B- (C+ for students applying under UTAS schemes).
- Passed LAW 131 and LAW 141 (or their equivalent at another New Zealand law school) with at least a C+.

AND

- Gained at least 75 points (or the equivalent) of non-Law university degree courses.
- Passed all eight courses (120 points) with an overall Grade Point Average (GPA) of at least 3.0 (equivalent to a grade of C+).

Entry into LLB Part II for 2023 will be calculated on the basis of your grades in LAW 121G, LAW 131 and LAW 141, plus your most-recent, best 75 points from non-Law courses. The Selection Committee meets in late-December 2022.

If you have repeated one or more courses of LLB Part I (LAW 121G, LAW 131, LAW 141), the best grade you have received for these three courses will be factored into the calculation of the Law GPA. The other grades you have received for the three law courses in LLB Part I will be disregarded.

The overall average grade required for selection into LLB Part II can vary from year to year, depending on the number of applicants. In recent years the minimum grade required has been between a GPA of 5.0–6.7 (equivalent to a grade between a B and a B+).

For 2023, students with a Law GPA of 6.5 or higher (equivalent to a grade midway between A- and B+) will be guaranteed entry into LLB Part II. Students with a Law GPA of less than 6.5 will still be considered for selection into LLB Part II.

Please note: Entry requirements may change each year.

www.law.auckland.ac.nz/apply-llb-ii

Academic English Language Requirement

The University has an Academic English Requirement (AELR) for all its undergraduate programmes. The aim of the AELR is to ensure you have sufficient competence in academic English to support your study at University. The AELR will not affect whether you are offered a place on a programme, and may be met through your entry qualification or through satisfactory completion of an approved course in your first year of study.

Applicants who have not met the AELR through their entrance qualification will be provided with advice at the time of enrolment.

www.auckland.ac.nz/aelr

International students

If English is not your first language, you will need to provide proof of your English language proficiency.

For LLB Part I, this can be demonstrated by:

- An IELTS or other approved English language test score (The minimum requirement for IELTS is an overall score in the Academic IELTS of 6.0, with no band less than 5.5).
- Passing the Foundation Certificate in English for Academic Purposes (FCertEAP) or the English Pathway for Undergraduate Studies (EPUS).

Graduates with degrees from outside New Zealand applying directly into LLB Part II must have an IELTS score of 7.0 with no bands less than 6.6.

If you are an international applicant, who has graduated with a bachelors degree, please also see "Graduate admission to LLB Part II" on page 4.

For more information about English-language requirements and approved alternatives to IELTS, see www.auckland.ac.nz/ug-english-reqs

Our International Office also has more information:

Web: www.auckland.ac.nz/international

Email: Int-questions@auckland.ac.nz

Phone: +64 9 373 7513

How to apply

It's a two-step process to apply for and enrol in your chosen programme.

First you need to apply

Go online and complete the Application to Study form. If you haven't already, you'll be asked to sign up for a new account. It's easy, and you'll soon be underway in making your application. www.auckland.ac.nz/apply

If you have no prior tertiary study you must apply for a conjoint LLB programme or LLB Part 1 and one other bachelors degree programme to satisfy the Law Part I requirement for five non-Law courses.

Complete the Application to Study form

1. Complete sections one and two with your personal information.
2. In section three under 'Select programme type' choose 'Bachelors'.
3. Then select 'Bachelor of Laws' as your option under 'Programme'.
4. For 'Major/Specialisation' select Law Part I.
5. Complete the rest of the required information.

Note: Law is only available to study at the University of Auckland City Campus.

You will need to complete a separate Application to Study form for your other bachelors degree.

If you're applying for a conjoint programme you should make a Conjoint Application to Study in addition to your individual applications for the LLB and your other degree (when making this application choose the relevant conjoint option under 'Programme' in section three).

Next you will receive an acknowledgement email asking you to provide supporting documents (and in some cases to complete other requirements*) before your application can be assessed.

We will start assessing your application for LLB Part I once you've submitted your application for your other degree programme(s). You can check your application status online at any time. Be patient though – an admission decision will be made within four weeks of receiving the required documents, and some documents can take longer to process than others.

If your application is successful, we'll email you an offer – normally from mid-January**. To accept or decline this offer, log onto www.auckland.ac.nz/apply

Next you need to enrol

If your application is successful, we'll email you an offer of place. For Semester One applications, this normally happens from mid-January.

Once you've accepted an offer of place in a programme, you can enrol in a course. If you need some help with the enrolment process, take an online tutorial. www.auckland.ac.nz/enrolment

To find out more about our subjects and courses, come in, visit us online at www.law.auckland.ac.nz, or email undergradlaw@auckland.ac.nz

Next you need to make sure you pay your fees!

www.auckland.ac.nz/tuition-fees

Stuck? At any point in the process you can find answers to your questions 24/7 at www.askauckland.ac.nz

Or there's someone who can help during business hours at 0800 61 62 63 or email studentinfo@auckland.ac.nz

If you were enrolled at the University of Auckland in 2021 and wish to apply for LLB Part I or LLB Part II, go online to complete an Application for Admission. www.auckland.ac.nz/apply

If you are a Māori or Pacific student, or a student with a disability, or from a low socio-economic or refugee background, and were not enrolled at the University of Auckland in 2021, you should:

- Complete an online application form at www.auckland.ac.nz/apply
- Tick the box requesting consideration under the targeted admission schemes

If you are a Māori or Pacific student, or a student with a disability, or a student from a low socio-economic or refugee background, who is returning to the University of Auckland and you wish to apply for LLB Part II, you should:

- Complete an online application form at www.auckland.ac.nz/apply
- Complete the additional Targeted Admission Scheme application on the Law School website and be available for an interview mid-December.

Dates to remember

Closing dates for applications for admission in 2022

LLB Part I	8 December 2021	LLB Part II	1 December 2021
------------	-----------------	-------------	-----------------

Academic year 2022

Summer School	6 January to 16 February 2022
Semester One	28 February to 27 June 2022
Semester Two	18 July to 14 November 2022

Money matters

The domestic student fee is based on the 2021 fees schedule for an LLB student enrolled in a full-time load of 120 points and should be used as a guide only. The international student fee is for 2022. For updated fees information, refer to www.auckland.ac.nz/tuition-fees

All fees are charged on a per point basis. Part-time students taking fewer than 120 points will pay proportionately lower fees.

Domestic student	NZ\$6,800	International student	NZ\$39,786
------------------	-----------	-----------------------	------------

*For some programmes, you may be required to submit supplementary information (eg, a portfolio of work, referee reports, an online form) or to attend an interview/audition.

**If you are not offered a place in the programme(s) of your choice, you will receive an email outlining alternative options. Your final offer of a place depends on two things: your admission to the University (which for school leavers may depend on your final school results) and your assessment by the relevant faculty.

Disclaimer: Although every reasonable effort is made to ensure accuracy, the information in this prospectus is provided as only a general guide for students and is subject to alteration. All students enrolling at the University of Auckland must consult its official document, the current Calendar of the University of Auckland, to ensure they are aware of and comply with all regulations, requirements and policies. Publication date: January 2021.



THE UNIVERSITY OF
AUCKLAND
Te Whare Wānanga o Tāmaki Makaurau
NEW ZEALAND

Auckland Law School

The University of Auckland
Private Bag 92019
Auckland 1142
New Zealand

Questions: undergradlaw@auckland.ac.nz
0800 61 62 63 (outside Auckland)
923 1969 (within Auckland)
+64 9 923 1969 (International)



law.auckland.ac.nz