



THE UNIVERSITY
OF AUCKLAND

FACULTY OF EDUCATION

Te Kura Akoranga o Tāmaki Makaurau
Incorporating the Auckland College of Education

2011

The University of Auckland
Faculty of Education
Undergraduate Prospectus



Contents

Welcome	3
Why study with us?	4
What can you study?	7
Where can it take you?	8
International students	9
Early childhood education (ECE)	10
Bachelor of Education (Teaching) ECE specialisation	11
Bachelor of Education (Teaching) ECE Pasifika specialisation	12
Diploma of Teaching (ECE)	13
Diploma of Teaching (ECE) Pasifika specialisation	13
Graduate Diploma in Teaching (ECE)	14
Primary teaching	15
Bachelor of Education (Teaching) Primary specialisation	16
Bachelor of Education (Teaching) Huarahi Māori specialisation	17
Graduate Diploma in Teaching (Primary)	18
Secondary teaching	19
Bachelor of Physical Education	20
Graduate Diploma in Teaching (Secondary)	21
Education as a subject	22
Bachelor of Arts - Education major/minor	23
Social Work and Human Services	24
Bachelor of Social Work	25
Bachelor of Human Services (Youth Work major)	26
Bachelor of Human Services (Disability Studies major)	27
Foundation programmes	28
Foundation Certificate Education	29
Foundation Certificate Tohu Tūāpapa Mātauranga	30
What else do you need to think about?	31
Student services and support	32
How do you get in?	34
- Entry criteria	
- Guaranteed admission scores	
- Other admission categories	
Money matters	37
- Tuition fees	
- Financial assistance	
Dates to remember	38
How to apply	39



The University of Auckland Faculty of Education welcomes you

Nau mai, haere mai ki Te Kura
Akoranga o Te Whare Wānanga
o Tāmaki-makau-rau.

Talofa lava, Malo lelei, Kia orana
and a warm Pacific welcome
to you.

Education is fundamental to improving the well-being of individuals and communities, the expansion of opportunities and the achievement of potential. I welcome your interest in studying with us and contributing to this crucial aspect of modern society.



There has never been a better time to study teaching, social work and human services. There is a high demand for well-qualified graduates in these professions. You can also choose to major in Education in the Bachelor of Arts.

Our programmes are underpinned by research-informed evidence drawn from the work of our own staff and from national and international literature. Our qualifications are also informed by the experience of practitioners so that what you learn relates to real situations and examples.

We know that you expect intellectual challenge, practical advice and personal support in achieving your goals. We also want to encourage a lifelong love of ideas, discovery and learning, and your ability to work independently and in collaboration with others.

We are committed to intellectual integrity, openness and curiosity; and to fostering understanding of human and cultural diversity. Most of all we want to make a difference – and you can help us do that.

If these ideas excite you, I look forward to your working with us and wish you well on what I know will be a worthwhile and important journey.

Kia kaha, kia māia, kia manawanui rā hoki

A handwritten signature in black ink, appearing to read 'Graeme Aitken'. The signature is fluid and cursive.

ASSOCIATE PROFESSOR GRAEME AITKEN
Dean, Faculty of Education
The University of Auckland

Why study with us?



The University of Auckland's Faculty of Education is the place to begin your career in teaching, social work or human services. Perhaps you are still at school and thinking about your future, or perhaps you are already in the workforce but thinking of a change of career. We offer innovative programmes to help you enter into a rewarding and satisfying career where every day is different and you will always be learning something new.

Why Education?

Education is a window to the world, to ourselves and the society we live in. It's at the heart of an innovative, knowledgeable and caring society, and is fundamental to the development of individuals and the community. Making a difference for others through education (teaching or social services) is one of the most rewarding things you can ever do.

The University of Auckland

- New Zealand's highest-ranking university.
- Highly regarded for quality programmes and leading research.
- Offers excellent resources and facilities.
- Your qualification from The University of Auckland will be internationally recognised and respected.

The Faculty of Education

The faculty was established in 2004 when the widely respected Auckland College of Education and The University of Auckland's School of Education amalgamated to form the Faculty of Education. The faculty combines the strengths of both of these institutions providing research-led expertise as well as almost 130 years' experience as quality teacher and professional education specialists and over 25 years' experience in social services education.

We offer a full service when it comes to education. In addition to the undergraduate and pre-service programmes listed in this prospectus, the faculty also offers postgraduate programmes, professional development opportunities, consultancy and support services for teachers, schools, ECE centres, principals and those in social services. We're with you every step of the way and have strong links with the community we serve. Few education providers can match the full spectrum of services we offer.

Research-led learning and practical experience

You will study at a university with a first-rate research reputation and strong links between teaching, learning and research. You will learn from teachers who combine knowledge of the latest developments in their field with a passion for their work.

We also ensure you get opportunities to experience first-hand what it's like to work in schools, centres or social services agencies so you have a sound understanding of what your future career is actually like. When you graduate, you'll have the knowledge as well as the practical experience to begin your career and really make a difference.



Supportive environment

We provide the tools and support to help you reach your goals during your time with us.

There is a wide spectrum of resources, support and facilities available to you to ensure your enjoyment as well as success in your study (see p32 for information on student support services).

Whether you are interested in teaching or social services, you'll have many opportunities to mix with like-minded people who are as passionate about the same profession as you are.

We also offer flexible study options for selected programmes, designed for people who do not live locally or who need to juggle work, family or other commitments with their study.

General Education

General Education is a valuable component of University of Auckland undergraduate programmes. Designed to give you knowledge and an appreciation of fields outside your main area of study, you will choose from a range of subjects to complement your specialist knowledge.

The number of courses you study from the General Education schedule will depend on your undergraduate degree or diploma and the campus at which you study.

Study locations

Epsom Campus

74 Epsom Avenue, Epsom, Auckland
Phone: 0800 61 62 63

The Epsom Campus is the main campus for the Faculty of Education. All programmes featured in this prospectus can be studied at this campus. Located less than 10 minutes' drive from the CBD and the City Campus, Epsom Campus is also a short walk away from the cafés and shops of Mt Eden village. There is parking on campus and regular bus services run to and from Mt Eden/Epsom and the city.

The Epsom Campus is a close-knit and multicultural campus with around 5,000 students. Class sizes tend to be small and there are plenty of study spaces, computer rooms, student support services and facilities. The campus also has tennis courts, a swimming pool, sports centre, marae and early childhood centres.

Tai Tokerau Campus

13 Alexander Street, Whangarei
Phone: 0800 61 62 63

Some of our teaching programmes are offered at Tai Tokerau Campus in Whangarei – a convenient location if you live in Northland.

The campus is within walking distance of the centre of Whangarei and offers a small, friendly and supportive learning environment. There are approximately 120 students enrolled at the campus.

Flexi-mode students living in this area can also access facilities at Tai Tokerau Campus such as the library and student learning support.

City Campus

22 Princes Street, Auckland City
Phone: 0800 61 62 63

The City Campus is located in the heart of Auckland City with major bus and train transport routes servicing the University precinct. The City Campus has a cosmopolitan setting and caters for more than 32,000 students University-wide.

Education courses within the Bachelor of Arts and many General Education options are offered at the City Campus.

If you are studying at another campus you may also access facilities located at the City Campus including the University's main gym and recreation centre, general library and other student services.

The University of Auckland at Manukau Institute of Technology

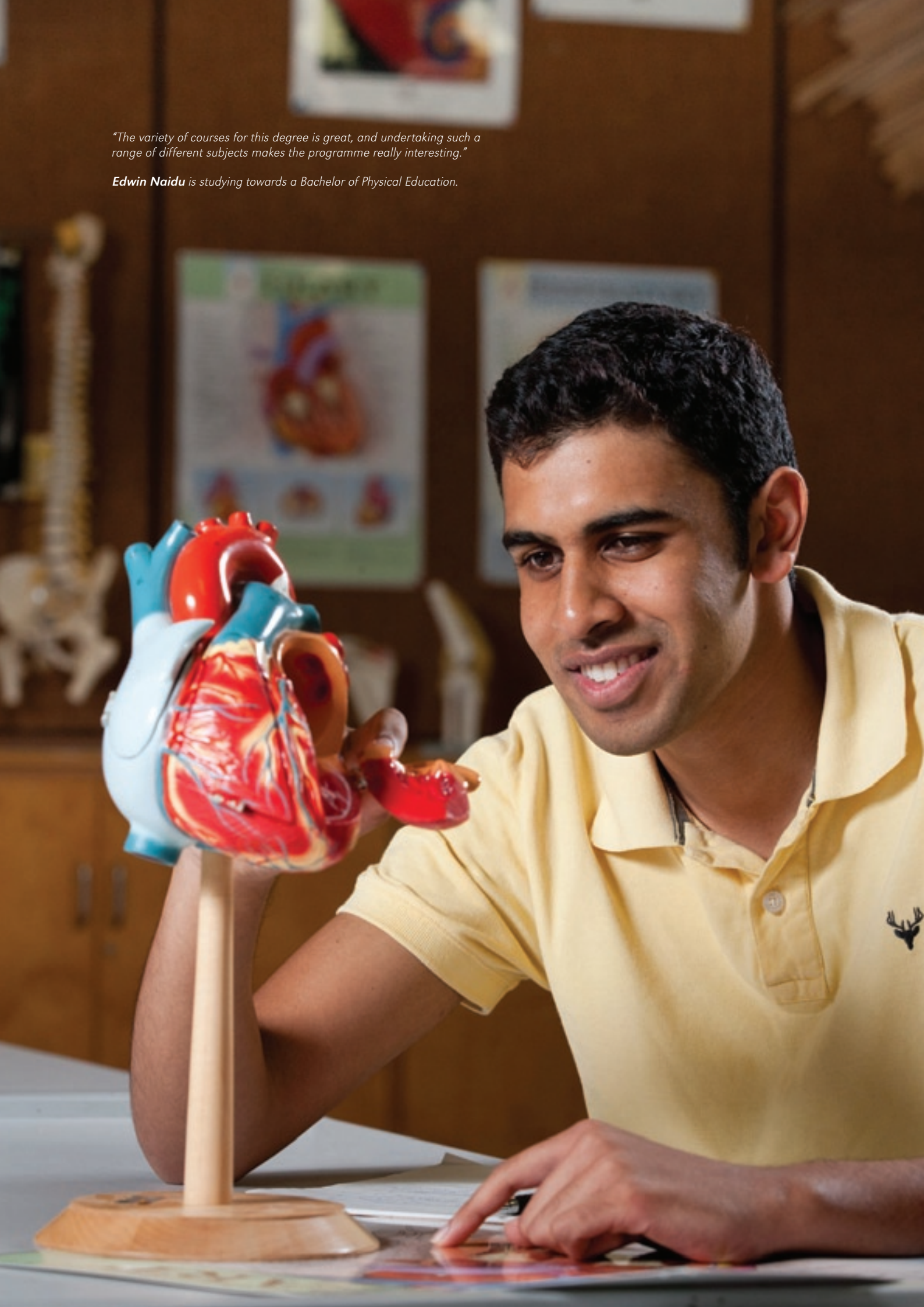
Gate 11, NQ Block, Room NQ227
Otara Road, Otara, Manukau City
Phone: +64 9 968 8765 ext 7361

You can study the Bachelor of Education (Teaching) Primary specialisation and core courses in the Graduate Diploma in Teaching (Secondary) through The University of Auckland at Manukau Institute of Technology. This allows people living near this campus to gain a qualification from The University of Auckland while studying close to home.

All University of Auckland campuses are smoke-free environments.

"The variety of courses for this degree is great, and undertaking such a range of different subjects makes the programme really interesting."

Edwin Naidu is studying towards a Bachelor of Physical Education.



What can you study?

The faculty offers undergraduate programmes in teaching, social work and human services. There are also graduate diplomas in teaching offered for students who already hold a degree qualification (or recognised equivalent) and want to become a teacher.

Teaching

Choose from:

Early childhood education (ECE)

An early childhood teacher works with under-five-year olds supporting them in their learning, development and growth.

It's an opportunity to give young children the best start possible to their education. These early years are considered to be the most important years in a child's development. See p10.

Programmes offered by the faculty:

Bachelor of Education (Teaching)
ECE specialisation
Bachelor of Education (Teaching)
ECE Pasifika specialisation
Graduate Diploma in Teaching (ECE)*
Diploma of Teaching (ECE)
Diploma of Teaching (ECE)
Pasifika specialisation

Primary teaching

Primary teachers have a major influence on the learning and development of children. They teach across the curriculum and also get to share their passion for special subjects, sporting and cultural interests.

Primary teachers are involved in the education of children from Year 1 to Year 8 (typically age five to 13-year olds). See p15.

If you are proficient in te reo Māori you could also teach in bilingual or Māori medium school settings. See p17.

Programmes offered by the faculty:

Bachelor of Education (Teaching) Primary specialisation
Bachelor of Education (Teaching) Huarahi Māori specialisation
Graduate Diploma in Teaching (Primary)*

Secondary teaching

There is an ongoing need for qualified and skilled teachers in all secondary school subject areas. Teaching at secondary level is an opportunity to share your passion for a subject and to enhance students' learning and understanding of your subject area.

A secondary school teacher teaches students from Year 9 to the end of Year 13 (typically age 13 to 18-year olds). See p19.

Programmes offered by the faculty:

Bachelor of Physical Education
Graduate Diploma in Teaching (Secondary)*

**Prerequisite: a bachelors degree*

Education as a subject

If you are interested in education but not wanting to teach, you can study Education as either a major, minor or elective subject within a Bachelor of Arts degree. See p22.

Offered by the Faculty of Arts:

Bachelor of Arts - Education major/minor

Social Work and Human Services

Choose from:

Social Work

A social worker works with individuals, families and communities to overcome the social challenges they face in today's world. It's a profession in which you can make a positive difference in people's lives.

You might work in direct service with clients, or in policy, research or teaching. See p25.

Programmes offered by the faculty:

Bachelor of Social Work (three majors offered)
Bachelor of Social Work (Honours)

Human Services

Working in human services is a way to help improve the lives of others and to provide services that support people to overcome the barriers in their life. Our majors in Disability Studies and Youth Work give you added skills and knowledge to better assist these sectors. See p26-27.

Programmes offered by the faculty:

Bachelor of Human Services
(Youth Work major)
Bachelor of Human Services
(Disability Studies major)

Foundation programmes

Our Foundation Certificates are designed to bridge you into study at the Faculty of Education. This is a good place to start if you don't meet the University Entrance Standard or need to build up your learning and study skills before embarking on tertiary level study. See p28.

Programmes offered by the faculty:

Foundation Certificate Education
Foundation Certificate Tohu Tūāpapa
Mātauranga



Where can it take you?

The role teachers, social workers, youth workers and disability workers play is crucial. It's all about enhancing the lives of individuals, families and the community.

With a qualification in teaching, social work or human services you can expect a rewarding, challenging and active career where no two days are the same.

Increasing populations and increasingly diverse populations also place pressure on these services. There will always be a demand for well-qualified and enthusiastic teachers and effective, caring and professional social workers and services. The Faculty of Education provides reputable qualifications to enter into these fields.

A career in teaching

Teaching is a challenging and exciting career. It is demanding, yet rewarding. It also gives you the freedom to work in a variety of settings and countries.

Teaching is often seen as a profession with a high level of job security, which certainly has its advantages.

Depending on the programme you study you could be working with under-five-year olds (early childhood education), new entrants through to Year 8 (primary teaching) or Year 9 to Year 13 (secondary teaching).

You might go on to postgraduate study, specialise in an area of teaching or take your teaching qualification to work in a broader area of education.

Your skills as a teacher are also transferable to other professions. The personal skills that you will develop, such as excellent communication

and organisational skills, creativity and flexibility, are valued by employers in almost every field of work. While you may never want to stop teaching, it's always nice to know that you will have a wide range of options.

A career in social work

Social workers are in high demand. There is a significant shortage of qualified social workers particularly in New Zealand, Australia and the United Kingdom so there are plenty of job opportunities out there.

As a qualified social worker, you could work in a wide range of fields from health services, child and family services, child protection and justice, to youth, mental health, disability services, probation service and community organisations. You could choose to work in direct service with clients or in areas such as policy, research or education.

With a high demand for social workers overseas, a qualification in social work could be your passport to overseas travel and employment.

A career in human services

A qualification in human services can lead to work in a wide range of human service agencies and community settings. Choosing to

major in either youth work or disability studies gives you specialised skills, insight and knowledge in these fields and will enhance your career prospects.

You might work in direct service with people or work in areas such as policy, management or research. Your qualification will strengthen your chances of gaining leadership and management positions.

Majoring in Youth Work will enable you to work in a variety of services including youth health, community development, truancy or alcohol and drug support.

Majoring in Disability Studies will enable you to work in government departments, private services, mental health services, schools or organisations such as Spectrum Care (supporting people with disabilities), Royal New Zealand Foundation for the Blind or IHC.

Other careers in education

An education qualification can open the door to a range of other career options.

Studying education in its broader sense (eg, within a Bachelor of Arts) can cover areas such as educational policy, child development or the philosophy of education.

The study of education can prepare you for working in a wide range of careers including: educational and social policy, research, human resources, social agencies and educational and psychological services.

Postgraduate study

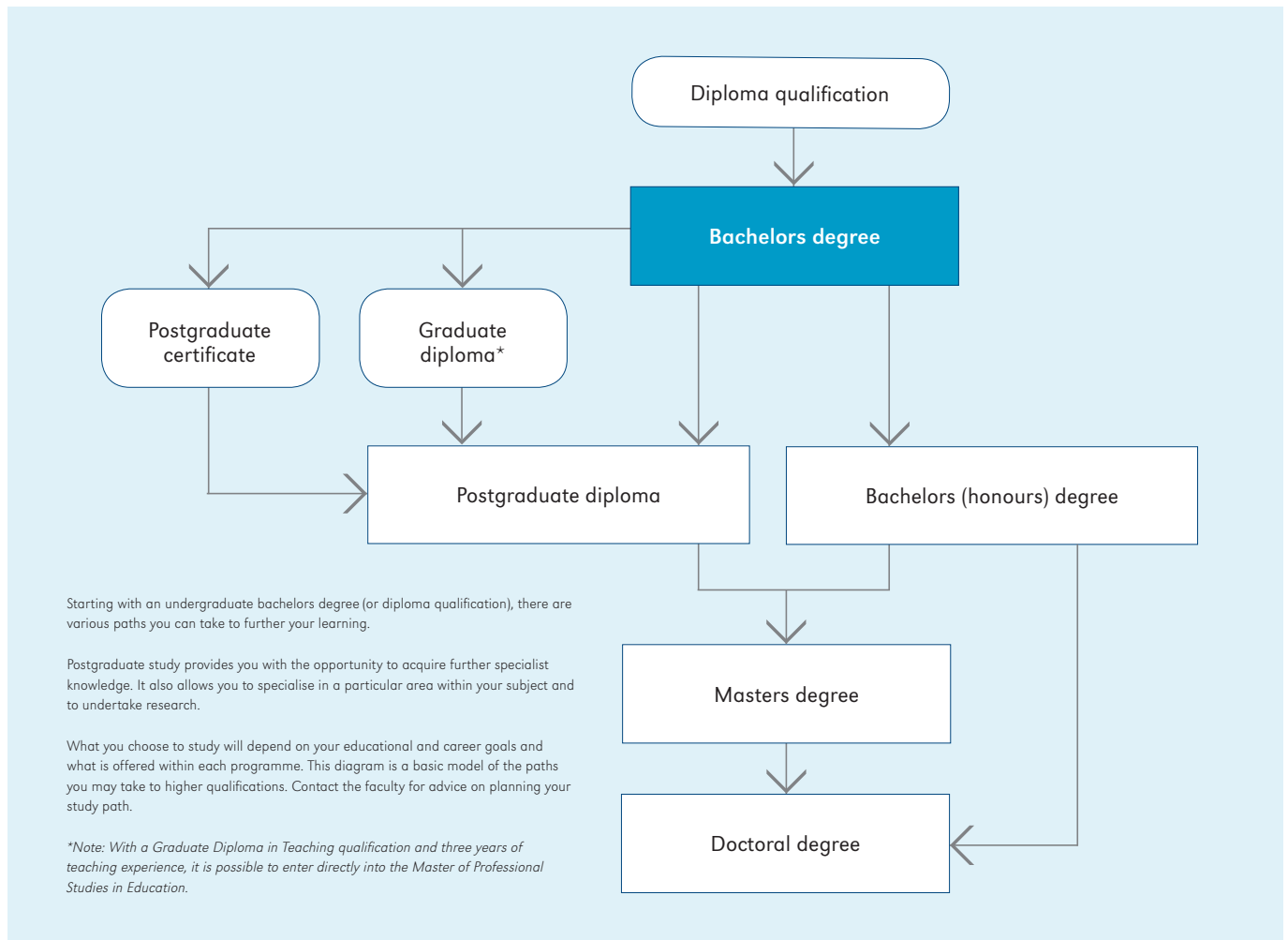
Your experience at the Faculty of Education doesn't have to end when you complete your undergraduate degree. There are plenty more opportunities to further develop your understanding of your subject area.

From graduate diplomas through to masters and doctoral qualifications, postgraduate study will add depth to your undergraduate study and increase your opportunities for career and salary advancement.

For more information on postgraduate study at the Faculty of Education, contact the faculty on 0800 61 62 63 or education@auckland.ac.nz



Your study path



International students

For many years our faculty has been welcoming students from all over the world to study in a wide range of teacher education, social work and human services programmes. We offer more than academic excellence - we offer a friendly environment that is dedicated to helping you succeed.

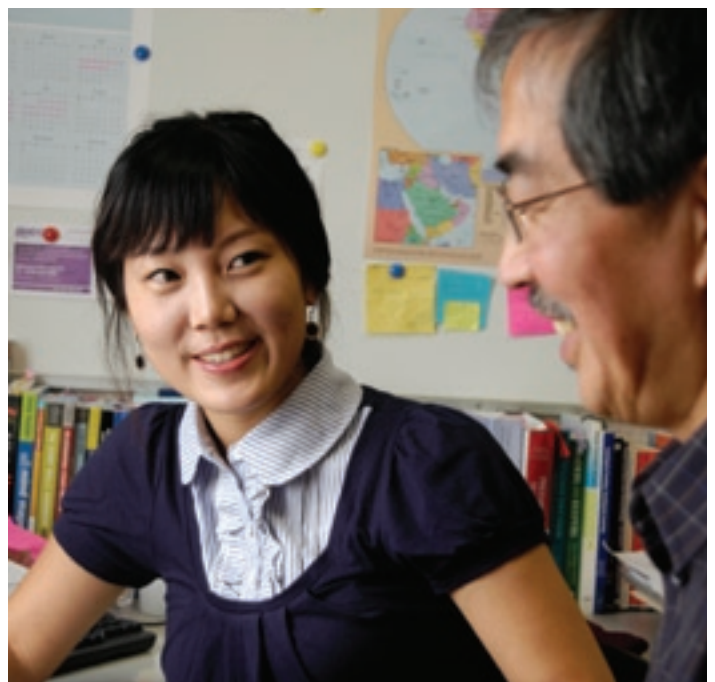
As an international student at The University of Auckland, you will enjoy a full network of student services and support to help you get the most out of your study and your time at Auckland. You will gain a qualification from a university with an international reputation for excellence and leadership. You will also have the chance to broaden your horizons by living in a country full of opportunity and different experiences.

Whether you're seeking a rewarding career in teaching, social work, youth work, or supporting people with disabilities - we look forward to welcoming you to the Faculty of Education.

Detailed information for international students can be found at the following websites:

www.auckland.ac.nz/international

www.education.auckland.ac.nz/international





Early childhood education (ECE)



Bachelor of Education (Teaching) Early Childhood Education specialisation

Do you want to play a vital role in the development of young children? This degree will give you the knowledge and skills to work effectively with under-five-year olds, create positive learning experiences and provide quality early childhood education.

Quick facts

Full-time: 3 years (part-time study options also available)

Taught at: Epsom Campus and nation-wide through flexible learning mode

Points per degree: 360

Highlights

- Qualifies you to apply for registration to teach in early childhood settings.
- Strong emphasis placed on practical experience in a variety of early childhood services and centres.
- Lecture-free days in the on-campus programme allow you to balance study with work and family commitments.
- Study by flexi-mode means that a majority of the programme (apart from practicums and on-campus blocks) can be studied from home.
- TeachNZ scholarships available.

What you'll be studying

In the first year you will:

- be introduced to the study of education, the New Zealand early childhood curriculum and effective teaching practice
- learn about social and learning contexts specific to early childhood education
- work alongside experienced teachers during your practical placements to develop your teaching practice.

In subsequent years, courses include:

- more advanced study of educational theory and practice via tutorials, lectures and group work
- further practical experience within early childhood settings
- one course from the General Education schedule allowing you to pursue interests outside your main area of study (may vary by campus/study mode).



"Both of my parents are secondary school teachers in Korea, so I originally planned to become a secondary mathematics teacher. In Year 12 of my schooling in New Zealand I went to a kindergarten for work experience and realised I loved working with that age group. It's very rewarding to support the achievement of young children, write their learning stories and be part of their development. Through my study I've also learnt how to teach maths and other subjects to very young children. I've really enjoyed meeting students from other countries and of different ages, going on practicum and attending interesting seminars from guest speakers and visiting academics."

Yanghyun Cho is an international student and in her final year of study towards a Bachelor of Education (Teaching) Early Childhood Education specialisation.

Sample BEd(Tchg) degree structure

Year 1	8		
Year 2	6	1	1
Year 3	5	1	2

■ Core courses - Stage I
■ Core courses - Stage II
■ Core courses - Stage III
■ General Education courses

Choose your career

With a BEd(Tchg) ECE specialisation you will be eligible to apply for provisional registration as a practising professional early childhood teacher. You will be qualified to teach in all early childhood services in New Zealand, including early childhood care and education centres, creches and kindergartens.

With this degree qualification, there is the potential for leadership or management positions. You will also be eligible to earn a salary at degree level.

Interested in further study?

With a BEd(Tchg) you could go on to do a further year of study at honours level. Other options include study at graduate or postgraduate level, which can lead on to study in education at masters and doctoral level. Refer p9 and to the *Faculty of Education Postgraduate Prospectus*.

Keen to find out more?

Student support services	p32
How do you get in?	p34
Money matters	p37
Dates to remember	p38
How to apply	p39

Contact the Faculty of Education for an Early Childhood Education programmes brochure or visit our website:

Phone: 0800 61 62 63

Email: education@auckland.ac.nz
www.education.auckland.ac.nz

If you already hold a teaching diploma in ECE you may be eligible to apply for the Bachelor of Education (Teaching) Teachers' specialisation. Contact the Faculty of Education for more information.

Bachelor of Education (Teaching)

Early Childhood Education Pasifika specialisation

Do you have a special interest in working with Pacific under-five-year olds? This degree gives you the knowledge, skills and professional base to work effectively with Pacific children so you can make a real impact in their learning and development.

Quick facts

Full-time: 3 years

Taught at: Epsom Campus

Points per degree: 360

Highlights

- Gain a specialised Pasifika education degree (first of its kind in New Zealand) that qualifies you to work in both Pacific and mainstream early childhood settings.
- Be supported throughout the duration of your study through our Pasifika Education team and Pasifika Academic Success Service.
- Pacific languages are used within the learning and teaching contexts of some courses.
- Gain practical experience in a variety of early childhood services and centres.
- Timetable and study options including lecture-free days allow you to balance study with work and family commitments.
- TeachNZ scholarships available.

What you'll be studying

In the first year you will:

- be introduced to the study of education, the New Zealand curriculum and effective teaching practice
- learn about social and learning contexts specific to early childhood education as well as young Pacific children
- work alongside experienced teachers during your practical placements to develop your teaching practice.

In subsequent years, courses include:

- more advanced study of educational theory and practice via tutorials, lectures and group work
- further practical experience within mainstream, bilingual and Pacific early childhood settings
- one course from the General Education schedule.

This Pasifika specialisation develops your knowledge and skills in the areas of literacy, numeracy, Pacific language and culture. Many of the courses embrace the different cultures, values and heritage of Pacific people. In some courses, both English and Pacific languages are used as mediums of instruction. This programme welcomes applicants from all cultural backgrounds who have an interest in Pacific education.

Sample BEd(Tchg) degree structure

Year 1	8		
Year 2	6	1	1
Year 3	5	1	2

■ Core courses - Stage I
■ Core courses - Stage II
■ Core courses - Stage III
■ General Education courses

Choose your career

With a BEd(Tchg) ECE Pasifika specialisation you will be eligible to apply for provisional registration as a practising professional early childhood teacher. You will be qualified to teach in all early childhood services in New Zealand including early childhood care and education centres, creches and kindergartens.

The Pasifika specialisation gives you advanced skills to work effectively with Pacific children and their families in centres with large numbers of Pacific children.

With this degree qualification, there is the potential for leadership or management positions. You will also be eligible to earn a salary at degree level.

Interested in further study?

With a BEd(Tchg) you could go on to do a further year of study at honours level. Other options include study at graduate or postgraduate level, which can lead on to study in education at masters and doctoral level. Refer p9 and to the *Faculty of Education Postgraduate Prospectus*.



"Having my own children and working in a pre-school got me interested in studying early childhood education, and my family also encouraged me to go back to study. I found university a big change but the Pasifika staff here are really helpful and encouraging. I've also benefited from working in study groups with other Pasifika students. This programme has really given me confidence - I'm looking forward to contributing back to my local Tongan immersion pre-school and I also want to go further and do postgraduate study."

Ama Latu is in her final year of study towards a Bachelor of Education (Teaching) Early Childhood Education Pasifika specialisation. In 2010 she applied for and received a TeachNZ Scholarship that covers her tuition fees for her final year and pays a cash amount on successful completion of study.

If you already hold a teaching diploma in ECE you may be eligible to apply for the Bachelor of Education (Teaching) Teachers' specialisation. Contact the Faculty of Education for more information.

Keen to find out more?

Student support services	p32
How do you get in?	p34
Money matters	p37
Dates to remember	p38
How to apply	p39

Contact the Faculty of Education for an Early Childhood Education programmes brochure or visit our website:

Phone: 0800 61 62 63

Email: education@auckland.ac.nz

www.education.auckland.ac.nz

Diploma of Teaching (Early Childhood Education)

A DipTchg(ECE) is the minimum qualification required to qualify you as an early childhood teacher. This diploma will give you the skills, knowledge and qualification to work in early childhood centres, creches and kindergartens. Study either our general diploma or Pasifika specialisation.

Quick facts

Full-time: 3 years

Specialisations: ECE, ECE Pasifika

Taught at: Epsom Campus. General diploma also taught by flexible learning mode

Points per diploma: 360

Highlights

- Qualifies you to apply for registration to work in early childhood settings.
- Choose from general ECE diploma or Pasifika specialisation.
- Flexible study options including lecture-free days allow you to balance study with work and family commitments.
- TeachNZ scholarships available.

What you'll be studying

You will get a strong grounding in the teaching theory and practice specific to early childhood education and be introduced to the New Zealand early childhood curriculum Te Whāriki. Practical experience in a number of different centres and settings is a feature throughout the three-year programme.

The programme of study mirrors the Bachelor of Education (Teaching) ECE and Pasifika ECE specialisations (see pages 11 and 12) for the first two years. In the third year of the Diploma, some courses differ to the degree programme but you still undertake a combination of practical experience in early childhood settings and advanced study in areas of ECE to prepare you for working in all types of early childhood settings.

If you are thinking of studying for this diploma, we encourage you to talk with a faculty student consultant or recruitment adviser about your options.

Sample DipTchg(ECE) structure

Year 1	8		
Year 2	6	1	1
Year 3	5	1	2

- Core courses - Stage I
- Core courses - Stage II
- Core courses - Stage III
- General Education courses

Choose your career

With a DipTchg(ECE) you will be eligible to apply for provisional registration as a practising professional early childhood teacher.

You will be qualified to work in a range of early childhood settings including kindergartens, creches and early childhood centres.

Interested in further study?

If you establish a record of successful study it is possible to transfer into the bachelors degree programme, opening up a wider range of opportunities. Other options may include study at graduate level. Refer p9.



Pasifika specialisation

The Pasifika specialisation gives you the knowledge, skills and professional base for working in centres with a large number of Pacific children. You will develop your skills and knowledge in the areas of literacy, numeracy, Pacific languages and culture. Many of the courses delivered embrace the different cultures, values and heritage of Pacific people. You also have the opportunity to undertake practical experience in mainstream, bilingual and Pacific early childhood settings. In some courses, both English and the Pacific languages are used as mediums of instruction.

Keen to find out more?

Student support services	p32
How do you get in?	p34
Money matters	p37
Dates to remember	p38
How to apply	p39

Contact the Faculty of Education for an Early Childhood Education programmes brochure or visit our website:

Phone: 0800 61 62 63

Email: education@auckland.ac.nz

www.education.auckland.ac.nz

Graduate Diploma in Teaching (Early Childhood Education)

If you already have a degree* you can qualify to teach in any early childhood service after just one year of full-time study at graduate diploma level.

Teachers come from a wide range of backgrounds and bring their own unique perspectives to teaching. Get into a rewarding career supporting under-five-year olds in their learning and development and help to give them the best start possible to their education.

Quick facts

Full-time: 1 year (part-time study options also available)

Taught at: Epsom Campus and by flexi-mode

Points per programme: 150 (intensive programme)

Highlights

- Strong emphasis placed on practical experience in a variety of early childhood services and centres.
- May qualify you for a higher pay scale as it recognises your previous qualification.
- TeachNZ scholarships available.
- Flexible study options available through online delivery (flexi-mode) and lecture-free days in the on-campus programme.

What you'll be studying

This is an intensive programme equivalent to 1.25 years of full-time study completed within a 12-month period.

During the course of your study you will:

- be introduced to the ECE curriculum and learn about social and learning contexts specific to early childhood education
- study educational theory and practice via tutorials, lectures and group work
- undertake practical experience in early childhood settings and work alongside experienced teachers to develop your teaching practice.

Choose your career

This qualification prepares you to teach in all early childhood services in New Zealand, including early childhood care and education centres, creches and kindergartens. You will be eligible to apply for provisional registration as a practising professional early childhood teacher, possibly leading to leadership or management positions in an early childhood centre in the future. With a three-year degree and a graduate diploma you'll be eligible to start on a higher step of the salary scale in



"I got interested in early intervention and early childhood education when I was planning to do an internship to qualify as an educational psychologist. I wanted to get some experience working with young children first and realised that by working in early childhood education I could make a real difference at that early stage. I also changed career direction because this field is flexible and works around my family commitments. I really like that I can work part-time yet be part of a professional community and have opportunity for further study and development. For me this is about a career that fits with all the other things I want to do."

Susan Mercer holds a Graduate Diploma in Teaching (ECE) and teaches in a sessional public kindergarten. She also holds a Master of Educational Psychology and a Master of Business Administration.

services covered by the NZEI teaching collective agreement for early childhood teachers.

How do you get in?

The academic prerequisite for the Graduate Diploma in Teaching (Early Childhood Education) is an undergraduate degree or equivalent. Overseas qualifications will need to be assessed by the University for equivalence with New Zealand degree qualifications.

Personal references, a literacy assessment and an interview are part of the selection process. Contact the faculty for further information.

Interested in further study?

With a GradDipTchg you could go on to study an area of interest (eg, special needs education) at graduate level or go on to postgraduate study. This can lead to study in

education at masters and doctoral level. With three years of teaching experience, it is also possible to enter directly into the Master of Professional Studies in Education. Refer p9 and to the *Faculty of Education Postgraduate Prospectus*.

**Degree or equivalent qualification recognised by The University of Auckland.*

Keen to find out more?

Student support services	p32
Money matters	p37
Dates to remember	p38
How to apply	p39

Contact the Faculty of Education for a Graduate Diploma in Teaching brochure or visit our website:

Phone: 0800 61 62 63

Email: education@auckland.ac.nz
www.education.auckland.ac.nz



Primary teaching

Bachelor of Education (Teaching) Primary specialisation

Primary teaching is a rewarding and enriching career. You can play a part in the education and development of children, inspire in them a love of learning, and share in their achievements.

The BEd(Tchg) will empower you to use effective teaching techniques based on proven educational theories and informed by leading research.

Quick facts

Full-time: 3 years (part-time study options also available)

Taught at: Epsom and Tai Tokerau campuses and at The University of Auckland at Manukau Institute of Technology

Points per degree: 360

Highlights

- Learn best-practice theories about teaching and learning and how to apply them in school and classroom settings.
- Extensive practical experience in schools to give you real-life insight into what teaching is all about.
- An innovative degree with final year options depending on your area of interest.
- Timetable and study options including lecture-free days allow you to balance study with work and family commitments.
- TeachNZ scholarships may be available for selected areas.

What you'll be studying

In the first year you will:

- be introduced to the study of education, the New Zealand curriculum and effective teaching practice
- work alongside experienced teachers during your practical placements to develop your teaching practice.

In subsequent years, courses include:

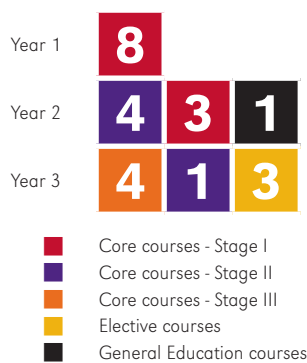
- more advanced study of educational theory and practice via tutorials, lectures and group work
- further practical experience within the primary teaching environment
- one course from the General Education schedule allowing you to pursue interests outside your main area of study (may vary by campus/study mode)
- in the final year of the programme, you will also have the opportunity to study an area of interest by selecting three courses from a range of options.



"I was studying fashion design but became interested in teaching through my mother who is an early childhood teacher, by working as a nanny, and at an art-based holiday programme working with 5-12-year olds. I've really enjoyed the practicums (experience in schools) in this programme and the cooperative environment. In fashion, people jealously guard their ideas but here it is the opposite - everyone shares their ideas in group work and are so supportive and willing to help one another. I plan to teach Year 5 and 6 or at an intermediate school."

Erin Mayers is in her final year of study towards a Bachelor of Education (Teaching) Primary specialisation.

Sample BEd(Tchg) degree structure



Choose your career

You'll be qualified to teach at primary school level from new entrants to Year 8. You will be eligible to apply for provisional teacher registration and to earn a salary at degree level (Q3). It is also possible to apply for some secondary teaching positions.

While most graduates go on to teach in New Zealand and overseas schools, this quality degree together with the skills you gain in organisation, planning and management can also lead you into other careers such as human resources, training, or educational roles in other organisations.

Interested in further study?

With a BEd(Tchg) you could go on to do a further year of study at honours level. Other options include study at graduate or postgraduate level, which can lead on to study in education at masters and doctoral level. Refer p9 and to the *Faculty of Education Postgraduate Prospectus*.

If you already hold a teaching diploma in primary teaching you may be eligible to apply for the Bachelor of Education (Teaching) Teachers' specialisation. Contact the Faculty of Education for more information.

Keen to find out more?

Student support services	p32
How do you get in?	p34
Money matters	p37
Dates to remember	p38
How to apply	p39

Contact the Faculty of Education for a Primary Teaching programmes brochure or visit our website:

Phone: 0800 61 62 63
Email: education@auckland.ac.nz
www.education.auckland.ac.nz

Bachelor of Education (Teaching) Huarahi Māori specialisation

Mā wai e whakaako te reo ki ā tātou tamariki?

Mehemea ko tō hiahia kia whakangungua koe hei pouako mō ngā kura Māori, haere mai ki Te Puna Wānanga o Te Kura Akoranga o Te Whare Wānanga o Tāmaki-makau-rau, ako ai.

Qualified teachers with te reo Māori are in high demand. This degree qualifies you to teach in Māori medium and bilingual schools as well as mainstream primary and intermediate schools.

Quick facts

Full-time: 3 years (part-time study options also available)

Taught at: Epsom Campus and Tai Tokerau Campus

Points per degree: 360

Highlights

- Qualifies you to teach in Māori medium, bilingual and mainstream primary and intermediate schools.
- Whānau learning environment with the faculty's Te Puna Wānanga.
- TeachNZ and other scholarships available.
- Te Korowai Atawhai (Māori Academic Support Service) Kai Manāki (support person) available to support you through your study.

What you'll be studying

In the first year you will:

- be introduced to the study of education in Aotearoa, Te Marautanga o Aotearoa curriculum and effective teaching practice
- work alongside experienced teachers during your practical placements to develop your teaching practice.

In subsequent years, courses include:

- more advanced study of educational theory and practice via tutorials, lectures and group work
- further practical experience within Māori medium, bilingual and mainstream classrooms
- one course from the General Education schedule allowing you to pursue interests outside your main area of study (may vary by campus/study mode).

In the third year of the programme, you will study a set of courses that look in-depth at:

- pānui/tuhituhi (literacy)
- pāngarau (mathematics)
- mātauranga (educational theory and practice)
- tikanga-ā-iwi (social sciences)
- te reo Māori.

Sample BEd(Tchg) degree structure

Year 1	8		
Year 2	4	3	1
Year 3	4	2	2

- Core courses - Stage I
- Core courses - Stage II
- Core courses - Stage III
- Elective courses
- General Education courses

Choose your career

This qualification will enable you to apply for registration to teach in primary, intermediate, Māori medium and bilingual schools. It is also possible to apply for some secondary teaching positions. It can also lead to opportunities in other careers such as curriculum development, government and iwi initiatives.

Pathways into the programme

If you need to advance your te reo Māori skills before starting this degree, we offer a one-year Foundation Certificate Tohu Tūāpapa Mātauranga that will develop your proficiency in te reo Māori and your knowledge of tikanga Māori. This certificate can also help students who don't meet the University Entrance Standard gain admission to The University of Auckland for Faculty of Education degree programmes (provided all other additional requirements are met). See p30 to find out more.

Interested in further study?

With a BEd(Tchg) you could go on to do a further year of study at honours level. Other options include study at graduate or postgraduate level, which can lead on to study in education at masters and doctoral level. Refer p9 and to the *Faculty of Education Postgraduate Prospectus*.

Nau mai, haere mai.

If you already hold a teaching diploma in primary teaching you may be eligible to apply for the Bachelor of Education (Teaching) Teachers' specialisation. Contact the Faculty of Education for more information.



"I decided to become a teacher after working as a teacher aide for five years. I realised that teaching had become a natural passion, but that I needed to get a qualification behind me. The language immersion environment in this programme means that I'm always progressing in my ability to speak te reo Māori. It's a living language and I enjoy being able to speak it every day – at home, at social and formal events and on the marae. I hope to be a role model in schools and to my family members – and to see my son grow up to speak te reo Māori fluently."

Patricia Tauariki (Ngāti Haua) is in her final year of study towards a Bachelor of Education (Teaching) Huarahi Māori specialisation. She received a TeachNZ Scholarship (Māori Medium) to help finance her studies and was also awarded the Sonny and Mona Riini Memorial Scholarship from the faculty in 2009.

Keen to find out more?

Student support services	p32
How do you get in?	p34
Money matters	p37
Dates to remember	p38
How to apply	p39

Contact the Faculty of Education for a Primary Teaching programmes brochure or visit our website:

Phone: 0800 61 62 63
Email: education@auckland.ac.nz
www.education.auckland.ac.nz

Graduate Diploma in Teaching (Primary)

If you already have a degree* you can qualify to teach in primary and intermediate schools after just one year of full-time study at graduate diploma level.

Teachers come from a wide range of backgrounds and bring their own unique perspectives to teaching. By becoming a teacher you can play a vital role in the education of children, encourage their love of learning and share in their achievements.

Quick facts

Full-time: 1 year (part-time study options also available for January intake)

Taught at: Epsom Campus

Points per programme: 160 (intensive programme)

Highlights

- Strong emphasis placed on practical experience in classrooms.
- Qualifies you for Q3+ (a higher salary level that recognises your previous qualification).
- Learn the latest teaching techniques and theories, and ways to apply them in school and classroom settings.

What you'll be studying

This is an intensive programme equivalent to 1.3 years of full-time study completed within a 12-month period. During the course of your study you will:

- study educational theory and practice and explore how children learn, grow and develop
- learn about the New Zealand primary curriculum and cover a variety of curriculum subjects
- undertake practical experience in primary classrooms and work alongside experienced teachers to develop your teaching practice.

Choose your career

The Graduate Diploma in Teaching (Primary) has a strong reputation in the teaching community.

After just one year of successful study, you'll be qualified to teach in primary and intermediate schools and be eligible to apply for provisional teacher registration.

Primary teachers with a degree in a secondary school curriculum subject eg, science, may be able to teach in secondary schools. It is also possible to apply for other secondary teaching positions eg, reading and language support.

How do you get in?

The academic prerequisite for the Graduate Diploma in Teaching (Primary) is an undergraduate degree or equivalent. Overseas qualifications will need to be assessed by the University for equivalence with New Zealand degree qualifications.

Personal references, a literacy assessment and an interview are part of the selection process. Contact the faculty for further information.

Interested in further study?

With a GradDipTchg you could go on to study an area of interest (eg, TESSOL) at graduate level or go on to postgraduate study. This can lead to study in education at masters and doctoral level. With three years of teaching experience, it is also possible to enter directly into the Master of Professional Studies in Education. Refer p9 and to the *Faculty of Education Postgraduate Prospectus*.

**Degree or equivalent qualification recognised by The University of Auckland.*

Keen to find out more?

Student support services	p32
Money matters	p37
Dates to remember	p38
How to apply	p39

Contact the Faculty of Education for a Graduate Diploma in Teaching brochure or visit our website:

Phone: 0800 61 62 63

Email: education@auckland.ac.nz
www.education.auckland.ac.nz



"I was working full-time at a gym setting up a kids' programme and as part of that taught a dance elective at an intermediate school. I'd always considered going into teaching and realised that I really liked that intermediate age group and should go ahead and do the graduate diploma programme. I'm glad I made the change. I am now a teacher of an amazing class and still have the opportunity to be involved in dance projects, which means a lot to me. The graduate programme is full on and you need to use your time well. I learned so much and everything has fallen into place since I started teaching."

Danielle Miller recently graduated with a Graduate Diploma in Teaching (Primary) and now teaches a composite Year 7/8 class at Baradene College in Auckland. She also holds a Bachelor of Dance.



Secondary teaching

Bachelor of Physical Education

By studying for a Bachelor of Physical Education (BPE), you can make a career out of your interest in physical education, health education, physical activity and sport. You'll gain specialised skills and in-depth knowledge in the field of physical education and learn how to be an effective, inspirational physical education teacher. The programme includes studies in expressive movement, outdoor education, bio-physical and socio-cultural sciences, education, te ao kori and sport.

Quick facts

Full-time: 4 years (part-time study options also available)

Taught at: Epsom Campus

Points per degree: 480

Highlights

- A unique programme that enables you to study physical education and teaching concurrently.
- Learn best-practice physical education, health education and educational theory from some of the best in the field.
- Strong emphasis on practical experience in schools, with some industry-related placements.
- A range of exciting electives to choose from in your final year of study including: teaching and coaching sport, health education themes, dance education, outdoor leadership, recreation and leisure.

What you'll be studying

In the first year you will:

- undertake practical components of physical education and develop your knowledge of the bio-physical and socio-cultural sciences relating to human movement and physical culture
- learn about the New Zealand education, teaching and learning environment
- undertake your first practicum (teaching practice) in a school.

Over the next three years you will:

- explore research and practices relating to the teaching of health and physical education
- undertake further teaching practice in a range of secondary schools and related industries
- take two elective courses in your final year.

During your programme of study you will also undertake two courses from the General Education schedule, giving you the opportunity to pursue interests outside your field of study.



"I chose to study at The University of Auckland so I could further my interest in physical education and because of the strong teaching focus of this degree. I've really enjoyed opportunities to use the theory we learn in subjects like biomechanics and anatomy through hands-on sporting activity and interaction with young people in schools. I've been able to apply skills learned in this programme already and teach sailing, swimming and an after school sports programme. It's really fulfilling to see kids challenge themselves through physical activity and help them see what they are capable of achieving. I can't wait to complete my degree and get out there and start working in a school."

Emma Lane is in her final year of study towards a Bachelor of Physical Education.

Sample BPE degree structure

Year 1	7	1	
Year 2	6	2	
Year 3	3	4	1
Year 4	3	3	2

■ Core courses - Stage I
■ Core courses - Stage II
■ Core courses - Stage III
■ Core courses - Stage IV
■ Elective courses
■ General Education courses

Choose your career

Typically, graduates of the Bachelor of Physical Education teach health and physical education at secondary school level in New Zealand or overseas. Graduates have also gone on to careers in associated industries, such as coaching, sports coordination and management, sports science, fitness centres and personal training, outdoor and adventure education programmes, dance tutoring and health education. Many graduates of this programme have leadership roles within New Zealand schools and beyond.

Interested in further study?

With a BPE you could go on to study at graduate or postgraduate level, which can lead on to study in education at masters and doctoral level. With three years of teaching experience, it is also possible to enter directly into the Master of Professional Studies in Education. Refer p9 and to the *Faculty of Education Postgraduate Prospectus*.

Keen to find out more?

Student support services	p32
How do you get in?	p34
Money matters	p37
Dates to remember	p38
How to apply	p39

Contact the Faculty of Education for a Bachelor of Physical Education brochure or visit our website:

Phone: 0800 61 62 63
Email: education@auckland.ac.nz
www.education.auckland.ac.nz

Graduate Diploma in Teaching (Secondary)

Use the qualification(s) you already hold to become a secondary school teacher.

Secondary school teachers come from a wide range of backgrounds and bring their own unique perspectives and life experiences to teaching. If you already have a degree* you can qualify to teach in your chosen curriculum subject(s) at secondary schools after just one year of full-time study.

Quick facts

Full-time: 1 year (part-time study options also available)

Taught at: Epsom Campus. Some courses also taught at The University of Auckland at Manukau Institute of Technology. Available at Tai Tokerau Campus through a combination of on-campus and flexible delivery in some subject areas.

Points per programme: 120

Highlights

- Strong emphasis placed on practical experience in classrooms (two seven-week practicums in schools).
- Qualifies you for Q3+ (a higher salary level that recognises your previous qualification).
- TeachNZ scholarships available for selected subjects.
- Specialise in areas of interest and qualification.

What you'll be studying

During the course of your study you will:

- study educational theory and practice specific to secondary teaching and adolescents
- study curriculum courses specific to your qualification and teaching subject(s)
- undertake practical experience in secondary classrooms and work alongside experienced teachers to develop your teaching practice.

Choose your career

Successful completion of this programme will make you eligible to apply for provisional teacher registration.

You'll be qualified to teach at secondary school level, utilising your undergraduate degree to teach one or more secondary school subjects.

This programme aims to equip you with

curriculum knowledge and management skills to assist you to be confident in the classroom from day one.

The programme can also lead to other related careers such as human resources, training, curriculum development and management.

How do you get in?

The academic prerequisite for the Graduate Diploma in Teaching (Secondary) is an undergraduate degree or equivalent. Overseas qualifications will need to be assessed by the University for equivalence with New Zealand degree qualifications.

In addition, each curriculum course has entry requirements. Your previous degree must link to secondary school subjects and the curriculum courses you choose to study must be aligned to that. For example, you could elect to take Science with a view to becoming a science teacher if you already have a degree in Science. If you have a degree in Fine Arts, you could elect to take Art and/or Art History. We will work with you to identify your options.

Personal references, a literacy assessment and an interview are part of the selection process. Contact the faculty for further information.

Interested in further study?

With a GradDipTchg you could go on to study an area of interest (eg, TESSOL) or go on to postgraduate study. This can lead to study in education at masters and doctoral level. With three years of teaching experience, it is also possible to enter directly into the Master of Professional Studies in Education. Refer p9 and to the *Faculty of Education Postgraduate Prospectus*.

**Approved degree or equivalent qualification recognised by The University of Auckland (criteria apply).*



"I got interested in teaching through my own children and through involvement in the local high school sports programme, and realised I enjoyed working with teenagers. It was really stimulating being back in the tertiary environment and studying to change careers. The lecturers in the technology department were extremely inspiring and I really enjoyed discussing the sociological and political context of education in New Zealand, and studying adolescent psychology and development."

Jeff Harnish is a former aircraft mechanical engineer, airline steward, and architect. He holds a Bachelor of Architecture and received a TeachNZ Career Change Scholarship to study teaching. Jeff studied for a Graduate Diploma in Teaching (Secondary) in 2009 and now teaches technology at One Tree Hill College in Auckland.

Keen to find out more?

Student support services	p32
Money matters	p37
Dates to remember	p38
How to apply	p39

Contact the Faculty of Education for a Graduate Diploma in Teaching brochure or visit our website:

Phone: 0800 61 62 63

Email: education@auckland.ac.nz

www.education.auckland.ac.nz



Education as a subject

Bachelor of Arts – Education major/minor

The study of education is essential to informing and understanding life in a modern society. If you are interested in education, but not necessarily teaching, you can study Education as either a major, minor or elective subject within a Bachelor of Arts (BA) degree.

Quick facts

Full-time: 3 years (part-time study options also available)

Major/minor: Education

Taught at: City Campus

Points per degree: 360

Highlights

- Choose from a wide range of courses dealing with varied aspects and areas of education such as gender and education, child and adolescent development, and the sociology, philosophy, politics and psychology of education.
- Course material is informed by the latest research in education. Learn from lecturers who are specialists in their field.
- Opens doors into a wide variety of career opportunities.
- Opportunity to complete part of your BA overseas at one of more than 90 universities in 25 different countries (360° Auckland Abroad).

What you'll be studying

In the first year you will:

- take a total of eight courses: Visit www.arts.auckland.ac.nz/BAstudyareas for a list of the subjects available and recommended structure. You will need to include at least two courses in Education in order to take this subject at a more advanced level later.

In subsequent years:

- choose at least two subjects from your first year to study at a higher level
- select one of these subjects as your major (primary focus), which you will study to Stage III level
- select your minor (secondary focus) or a second major
- if you chose Education as your major or minor you may choose to specialise in a specific area of education or simply select courses of interest

- you also have the opportunity to take more courses from other subjects and will complete courses from the General Education schedules.

Sample BA degree structure

	Stage I	Stage II	Stage III
Year 1	2 2 3 1		
Year 2	1 1	3 2 1	
Year 3	1	1 1	4 1

- Courses for major
- Courses for minor
- Elective courses
- General Education courses

Choose your career

A BA in Education can open up a variety of career paths. Education is a broad sector where you can work in education-based services or in educational roles in other organisations. You might work in management and administration, government, the diplomatic service, tourism, the arts, media, the film industry, advertising, writing, editing and publishing, human resources, policy analysis, research, information management, social services or translation.

With postgraduate study, graduates in Education have gained employment helping with the planning and servicing of education in New Zealand and overseas; in human resource and personnel work; in marae-based training; and in polytechnics and universities doing research and helping others study aspects of education.

The Liberal Arts Programme includes the BA in Education, BA(Hons) in Education and the MA in Education degrees. These degrees blend education with core disciplines such as psychology, philosophy, sociology and history to address important educational questions and issues. Courses cover theory and research across a wide variety of areas ranging from effective teaching, child and adolescent development, gender and education, Māori education, Pacific education and adult education.



"I became interested in studying education by accident when I took an Education paper to fill a gap in my Arts degree. I liked the idea that I could study the subject without becoming a teacher and decided to make it my degree major. Education also overlaps with my minor in Linguistics, particularly in the area of child language acquisition and I'm especially interested in child and adolescent development. My goal is to do postgraduate research and I've been able to have a taste of that working as a summer scholar with a researcher who specialises in my area of interest."

Ardeena Scott is in her final year of study towards a Bachelor of Arts majoring in Education.

Interested in further study?

With a BA you can go on to study at honours, graduate or postgraduate level. This can lead to study at masters and doctoral level.

Note: This qualification will give you an in-depth knowledge of education but does not qualify you to teach. You can apply to do a further year of graduate diploma study to qualify as a teacher. Secondary teaching will require your BA to include subject choices that link to secondary school subjects.

Keen to find out more?

The BA is offered by the Faculty of Arts. Contact the Faculty of Arts for more information on the BA degree and how you can include Education in your study:

Phone: 0800 61 62 63
Email: arts@auckland.ac.nz
www.arts.auckland.ac.nz

or

Liberal Arts Programme
Email: lap@auckland.ac.nz



Social Work and Human Services

Bachelor of Social Work

Bachelor of Social Work (Honours)

Qualified social workers are in high demand in New Zealand and overseas. The Bachelor of Social Work (BSW) gives you the knowledge, skills and professional base required to be an effective practising social worker liaising with individuals, groups, families and communities.

Quick facts - BSW and BSW(Hons)

Full-time: 4 years (part-time study options also available)

Majors: Child and Family Practice, Youth Services Practice, Health Social Work Practice

Taught at: Epsom Campus

Points per degree: 480

Highlights

- This degree is recognised by the Social Workers Registration Board. You'll be able to apply for social work registration, thereby enhancing your career and salary prospects.
- The only social work degree in New Zealand that allows you to major in an area of interest from your second year onwards.
- Get real experience on supervised field placements in social work agencies.
- Based on a record of successful study, you may be able to enter into the Bachelor of Social Work (Honours) programme in your final year of the BSW degree.

What you'll be studying

In the first year you will:

- be introduced to work in social and human services
- study psychology and sociology for human services, cultural diversity, professional communication skills, the impact of the Treaty of Waitangi on New Zealand's social services, and the nature and context of social work as a profession
- study a course from the General Education schedule, allowing you to pursue other interests outside your field of study.

Over the next three years, you will:

- build on your theoretical knowledge base with the addition of courses in the theory and practice of social work, including the policy environment, and law and the state
- develop your knowledge about working with children and families in diverse cultural communities
- have the option to major in either Child and Family Practice, Youth Services Practice or Health Social Work Practice

- do two field placements in different settings
- study another course from the General Education schedule
- If you enter into the BSW(Hons), your final year includes a supervised research project.

Sample BSW degree structure

Year 1	7	1	
Year 2	6	1	1
Year 3	7	1	
Year 4	6	2	(or BSW(Hons) programme)

■ Core courses
■ Elective/major courses
■ General Education courses

Choose your career

As a qualified social worker, you'll have a choice of challenging and rewarding careers in a wide range of fields from health, child and family services, child protection and justice, to youth, schools, mental health, disability services, probation service and community organisations. You might work in direct service with clients, or in policy, research or teaching.

A shortage of qualified social workers in many countries, particularly New Zealand, Australia and the United Kingdom, means there are many job opportunities.

Interested in further study?

The University of Auckland offers many postgraduate level programmes to enhance your professional practice and to optimise your career and salary prospects. Options include the Postgraduate Diploma in Professional Supervision and Master of Social Work*.

The faculty also offers a practitioner pathway for practising social workers wishing to upgrade their current diploma or other qualification to a four-year social work bachelors degree (conditions apply). A four-year degree is now the requirement in order to practise in many countries (including Australia). Contact the faculty for more information.



"I got interested in studying social work after my five children and I were helped through a difficult time by a social worker who showed real commitment, empathy and honesty with our case. So as a survivor I feel I have something to offer others. Although I'm a practical person with lots of life experience, studying practice theory and psychology has been really important because just wanting to help others is not enough - you need to know how to do it properly. My goal is to provide for my kids and help others who need support - particularly families in the refugee community."

Sue Jackman is studying towards a Bachelor of Social Work.

If you hold a recognised New Zealand diploma in social work or a similar qualification, you may be eligible for some credit towards The University of Auckland's Bachelor of Social Work.

* Master of Social Work: Proposed for 2011 and will be available subject to CUAP approval.

Keen to find out more?

Student support services	p32
How do you get in?	p34
Money matters	p37
Dates to remember	p38
How to apply	p39

Contact the Faculty of Education for a Bachelor of Social Work programme brochure or visit our website:

Phone: 0800 61 62 63
Email: education@auckland.ac.nz
www.education.auckland.ac.nz

Bachelor of Human Services (Youth Work major)

Do you want to support young people to lead valued lives in the community? The Bachelor of Human Services (BHumServ) with a major in Youth Work will develop your skills and knowledge to provide effective leadership and advocacy in youth work. You'll be better prepared to make a difference in the lives of young people and to help them realise their true potential.

Quick facts

Full-time: 3 years (part-time study options also available)

Taught at: Epsom Campus

Points per degree: 360

Highlights

- Enables you to gain the specialist skills and knowledge you will need to be an effective youth worker as well as the skills for working within a wide range of other human service settings.
- Gives you the preparation to be able to take on leadership and management roles.
- Develop a broad understanding of social, cultural and political issues in New Zealand society.
- This programme is also suitable for people who are already working in this field and it may be possible to study while you work.

What you'll be studying

In the first year you will:

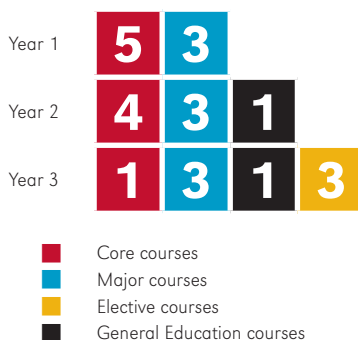
- study psychology and sociology for human services, human development, and professional communication skills
- study the impact of socio-cultural factors on young people's development and identity, media constructions of "youth", sexualities, and the Treaty of Waitangi in relation to human services and youth work
- begin your study of applied professional practice.

Over the next two years, you will:

- build on your theoretical knowledge base
- study courses such as leadership, management and social policy, social psychology, developmental psychology, the impact of addictions and violence, inclusion and aspirations, ethics, recreation, mental health and working for young Māori and Pacific people
- have opportunities to apply your learning in practice

- study two courses from the General Education schedule, allowing you to pursue interests outside your field of study.

Sample BHumServ degree structure



Choose your career

Agencies increasingly seek a degree as a prerequisite for employment, making graduates highly sought after. Completion of a BHumServ with a major in Youth Work will give you the skills and knowledge to better support young people. It could lead you to work in services such as the Ministry of Youth Development, iwi and Pacific community development, migrant and refugee support, youth health, truancy services, health education, and services such as drug use, mental health and sexual health support.

You'll also have the skills and preparation to be able to work in a wide range of other human service settings.

Interested in further study?

The University of Auckland offers postgraduate level programmes to optimise your career and salary prospects. Further study options include the Postgraduate Diploma in Professional Supervision for practice development and leadership.



"I first thought about working with youth at high school when a friend experiencing mental illness fell through the gaps. I could see a real need for youth workers in education so I enrolled in a diploma straight out of school and then worked on preventative strategies creating out of school programmes for education providers. Now I have returned to gain this degree level qualification so that I can continue helping young people. This is a really satisfying career, especially when you meet young people who you have helped and they tell you what they have been able to achieve."

Keli Fuimaono is in her final year of study towards a Bachelor of Human Services (Youth Work major).

Keen to find out more?

Student support services	p32
How do you get in?	p34
Money matters	p37
Dates to remember	p38
How to apply	p39

Contact the Faculty of Education for a Bachelor of Human Services programme brochure or visit our website:

Phone: 0800 61 62 63

Email: education@auckland.ac.nz

www.education.auckland.ac.nz

Bachelor of Human Services (Disability Studies major)

Do you want to provide quality support services for disabled people and their families? The Bachelor of Human Services (BHumServ) with a major in Disability Studies will provide you with the skills to work in disability services and to provide leadership and advocacy. This programme is also ideal for people who are already working in this field.

Quick facts

Full-time: 3 years (part-time study options also available)

Taught at: Epsom Campus

Points per degree: 360

Highlights

- Enables you to gain the specialist skills and knowledge you will need to better support disabled people and their families as well as the skills for working within a wide range of other human service settings.
- Gives you the preparation to be able to take on leadership and management roles.
- Develop a broad understanding of social, cultural and political issues in New Zealand society.
- This programme is also suitable for people who are already working in this field and it may be possible to study while you work.

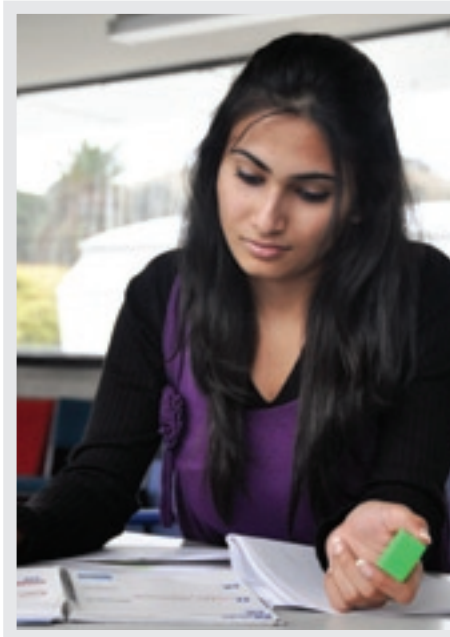
What you'll be studying

In the first year you will:

- study psychology and sociology for human services, human development, and professional communication skills
- study disability and support as well as theories of disability, social understandings and history
- begin your study of applied professional practice.

Over the next two years, you will:

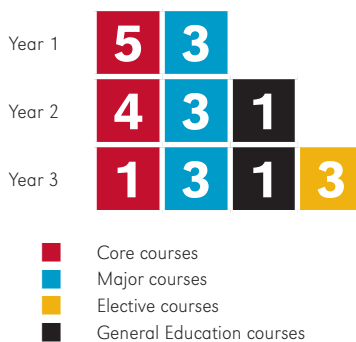
- build on your theoretical knowledge base
- study courses such as leadership, management and social policy, sociology of disability, social psychology, families and policy, behaviour analysis and support
- have opportunities to apply your learning in practice
- study two courses from the General Education schedule, allowing you to pursue interests outside your field of study.



"I became interested in working with people with disabilities when I was required to complete a social work component of my International Baccalaureate Diploma, and since India doesn't have specialist degrees in disability studies I decided to study in New Zealand. I've really enjoyed all my courses and exploring different topics, particularly understanding the psychology and behaviour of different cultures and their attitudes to disability. Another highlight is the team assignments that prepare us for the workplace. I'm looking forward to applying what I have learnt to improve the quality of life for people with disabilities, particularly in the areas of case management and needs assessment."

Kristine Emmanuel is an international student and in her final year of study towards a Bachelor of Human Services (Disability Studies major).

Sample BHumServ degree structure



Choose your career

Completion of a BHumServ with a major in Disability Studies will give you the skills and knowledge to better support disabled people and their families. It could lead you to work in government departments and ministries, private services and trusts supporting disabled people, schools, tertiary institutions, service providers (eg, IHC, NZCCS, RNZFB) and mental health services.

You'll also have the skills and preparation to be able to work in a wide range of other human service settings.

Interested in further study?

The University of Auckland offers postgraduate level programmes to optimise your career and salary prospects. Further study options include the Postgraduate Diploma in Professional Supervision for practice development and leadership, and the Graduate Diploma in Education - Disability Support specialisation.

Keen to find out more?

Student support services	p32
How do you get in?	p34
Money matters	p37
Dates to remember	p38
How to apply	p39

Contact the Faculty of Education for a Bachelor of Human Services programme brochure or visit our website:

Phone: 0800 61 62 63

Email: education@auckland.ac.nz
www.education.auckland.ac.nz



Foundation programmes

(Alternative pathways into Education degrees and diplomas)



Foundation Certificate Education

This is a specialist foundation programme to help bridge you into tertiary study at the Faculty of Education.

Successful completion allows admission into The University of Auckland for Faculty of Education programmes (provided all other additional requirements are met).

Quick facts

Full-time: 1 year

Taught at: Epsom Campus

Points per certificate: 120

Highlights

- Gain the academic skills and the confidence you need for successful tertiary study.
- Learn in a supportive environment and become familiar with the tertiary study environment of lectures, tutorials, assignments and exams.
- Successful completion of this certificate allows admission to The University of Auckland for Faculty of Education undergraduate programmes (provided all other additional requirements are met).

What you'll be studying

During the year you will:

- develop your learning skills, communication skills, critical thinking, essay writing and time management
- cover all essential academic skills for further study, including computing and numeracy skills
- be able to choose from electives relevant to future study in social work, teaching or human services.

We aim to make the learning environment as supportive as possible.

Where can it take you?

Successful completion of this certificate allows admission to The University of Auckland for Faculty of Education programmes. Please note, however, that applicants to these programmes

are subject to a selection process and need to demonstrate suitability for the relevant profession and meet all other additional requirements (see p36).

You could apply for selection into one of the following programmes:

- Bachelor of Education (Teaching)
 - Early Childhood Education, Primary or Huarahi Māori specialisation
- Diploma of Teaching (ECE)
 - General or Pasifika specialisation
- Bachelor of Physical Education
- Bachelor of Social Work
- Bachelor of Human Services
 - Youth Work or Disability Studies major.

During your foundation certificate study, you have the opportunity to pick electives in these areas of study to give you an idea of what they are like. This will help you to see where your interests lie if you haven't already made this decision.

You'll become familiar with the tertiary study environment, and if you continue your study at Epsom Campus you'll be ready to get straight into your first year of degree study without having to settle into a new environment.

How do you get in?

Applicants must:

- be a New Zealand citizen or a permanent resident of New Zealand
- AND
- have completed NCEA Level 2 at a New Zealand secondary school or its equivalent
- OR
- be over 20 years of age.

Personal references and an interview are part of the selection process.

Keen to find out more?

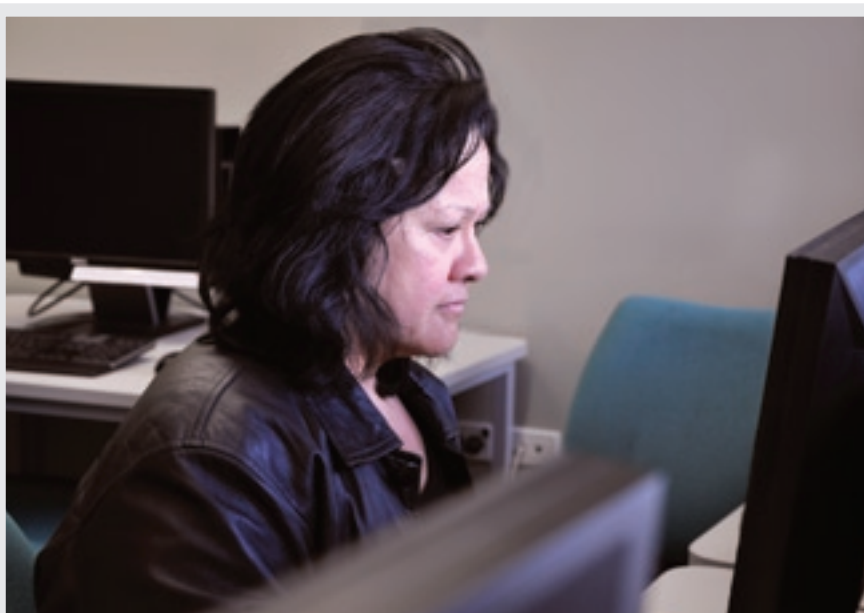
Student support services	p32
Money matters	p37
Dates to remember	p38
How to apply	p39

Contact the Faculty of Education for a Foundation Programmes brochure or visit our website:

Phone: 0800 61 62 63

Email: education@auckland.ac.nz

www.education.auckland.ac.nz



"I enrolled in this programme because I want to become an early childhood teacher, but I needed to build my skills for degree level study. I taught my own children before they entered primary school and I believe quality teaching at this young age can instil a love for learning and education that can help raise achievement for our Pasifika children. I love what I'm learning and although I've had to work hard to master computer skills in podcasting, powerpoint and online class discussions, this is excellent preparation for further study. Our lecturers are very helpful, we have many stimulating discussions in class and I find researching and writing my assignments really satisfying."

Peta Ravlich is currently studying for a Foundation Certificate Education. Following this, she plans to apply to study for a Bachelor of Education (Teaching) ECE specialisation.

Foundation Certificate Tohu Tūāpapa Mātauranga

This is a specialist foundation programme to help bridge you into tertiary study at the Faculty of Education.

You will develop your proficiency and skills in te reo Māori and tikanga Māori while gaining essential learning and tertiary study skills.

Quick facts

Full-time: 1 year

Taught at: Epsom Campus

Points per certificate: 120

Highlights

- Successful completion of this certificate allows admission into the Bachelor of Education (Teaching) Huarahi Māori specialisation or any other undergraduate programme at the Faculty of Education (provided all other additional requirements are met).
- A great opportunity to develop your Māori language, tikanga Māori and study skills.
- Learn in small groups in a supportive whānau environment at the faculty's Te Puna Wānanga.

What you'll be studying

During the year you will:

- develop your te reo Māori and tikanga Māori knowledge in preparation for further study in Māori education
- develop literacy, numeracy and further study skills to prepare you for tertiary study.

Where can it take you?

This certificate is specifically designed as a pathway into our Bachelor of Education (Teaching) Huarahi Māori specialisation - a programme that qualifies you to apply for provisional teacher registration to teach in Māori medium and bilingual schools as well as mainstream primary and intermediate schools (see p17).

This certificate can also allow admission into other undergraduate programmes offered by

the Faculty of Education, and you will have improved your proficiency in te reo Māori, which can open up opportunities in other careers.

The Faculty of Education undergraduate programmes that you could apply for selection into are:

- Bachelor of Education (Teaching)
 - Early Childhood Education, Primary or Huarahi Māori specialisation
- Diploma of Teaching (ECE)
 - General or Pasifika specialisation
- Bachelor of Physical Education
- Bachelor of Social Work
- Bachelor of Human Services
 - Youth Work or Disability Studies major.

Please note that applicants to these programmes are subject to a selection process and need to demonstrate suitability for the relevant profession and meet all the other additional requirements (see p36).

How do you get in?

Applicants must:

- be a New Zealand citizen or a permanent resident of New Zealand

AND

- have completed NCEA Level 2 at a New Zealand secondary school or its equivalent

OR

- be over 20 years of age.

Personal references and an interview are part of the selection process.



"It's always been my dream to be a teacher who really inspires children and makes a difference, but it had been a while since I left school. Doing the foundation year was a real cultural awakening - it also allowed me to 'warm up' and prepare myself for the degree by learning academic vocabulary, essay writing skills, and my own learning styles. I'm so far away from where I grew up but the staff and students at Te Puna Wānanga welcomed me and my family, and our marae Te Aka Matua o Te Pou Hawaiki has become like a second home."

Angela Te Kiri (Ngāti Porou, Ngāti Kahungunu) completed the Foundation Certificate Tohu Tūāpapa Mātauranga and is now studying for a Bachelor of Education (Teaching) Huarahi Māori specialisation so she can teach in schools using te reo Māori.

Keen to find out more?

Student support services	p32
Money matters	p37
Dates to remember	p38
How to apply	p39

Contact the Faculty of Education for a Foundation Programmes brochure or visit our website:

Phone: 0800 61 62 63

Email: education@auckland.ac.nz
www.education.auckland.ac.nz



What else do you need to think about?



Student services and support	32
How do you get in?	34
- Entry criteria	
- Guaranteed admission scores	
- Other admission categories	
Money matters	37
- Tuition fees	
- Financial assistance	
Dates to remember	38
How to apply	39

Student services and support

As part of the wider University, the Faculty of Education offers you excellent campus facilities and student support services. Our main campus is the Epsom Campus in Auckland and we also have our Tai Tokerau Campus in Whangarei. Students are supported by many on-campus facilities and resources and can also take advantage of other services offered at the University's City Campus.

Some programmes and courses are also taught at the University's City Campus and at Manukau Institute of Technology where other on-campus services are offered. See p5 for more about our locations.

Join the students' association

ETTSA (Epsom, Tai Tokerau Students' Association) is run by faculty students for faculty students, particularly those at Epsom and Tai Tokerau campuses. It is affiliated to AUSA (the Auckland University Students' Association).

ETTSA can help you with locker rental, access cards to the pool and fitness centre, MAXX transport discount stickers, budgeting advice and emergency financial grants. The elected student representatives organise cultural, social and sporting events on campus and with interfaculty teams. Epsom Campus is also supported by the AUSA WAVE advocacy services, with a student advocate on campus once a week to help with academic, legal or personal issues.

Computer facilities

The University has computers available for use on all campuses. Printers, document scanners, digital cameras and data projectors, as well as recording, editing and presentation equipment, are also available for your use.

Library

The University of Auckland Library, New Zealand's largest research library, offers students access to an extensive range of books, journals and research databases. As part of The University of Auckland Library system, the Sylvia-Ashton Warner Library provides services to undergraduates and researchers on the Epsom and Tai Tokerau campuses. It specialises in curriculum resources and research publications in the field of education and social work. Much of the material is online to support the needs of students studying flexibly.

Education subject librarians are available for individual or group consultations relating to finding information and referencing.

The Epsom Information Commons offers students state-of-the-art access to computing facilities and online access to information. Internet access is available for all students and technical support is offered by Information Commons staff. Computer use including basic internet and email services is free; charges are made for printing.

Online learning

Online learning is provided through The University of Auckland CECIL and Moodle learning management systems, which are accessed via the internet. Specialist support is provided for students enrolled in a flexible course or programme through the faculty's Centre for Educational Design and Development (CEDD).

Student Learning Centre (SLC)

The Student Learning Centre facilitates the development of effective academic learning and performance skills for all students enrolled at the University. Qualified tutors of the Centre provide learning instruction, advice and support through workshops, individual consultations, and online resources. Skills areas covered include learning, writing, test and exams, self-management, communication and computer skills.

It is necessary to register with the SLC to utilise its services; this costs \$10 for the calendar year. There is a Student Learning Centre at Epsom Campus and learning support is offered at Tai Tokerau Campus.

Te Korowai Atawhai Māori Academic Support Service

Te Korowai Atawhai means "the cloak of kindness, warmth and support".

Te Korowai Atawhai is a kaupapa driven and inclusive service that offers both academic and pastoral support. This service aims to support you in your academic endeavours and also provides a safe space that allows you to explore your cultural identity. Te Korowai Atawhai also gives you the opportunity to meet other Māori students and whanaunga studying at the Faculty of Education.





Pasifika Academic Success Service (PASS)

PASS is focused on Pacific student achievement and success. This service aims to provide help, information and support with study skills, assignments, life issues affecting study and much more. Academic workshops, tutorials, one-on-one consultations and study groups are offered to support and assist you towards independent learning and confidence in your studies.

Disability support services

The University of Auckland’s Faculty of Education welcomes students with impairments. The University’s Disability Services can support and assist you, whether you have specific learning disabilities, mental health conditions, medical conditions or whether you are deaf or hearing impaired, blind or vision impaired, or have mobility or speech impairments.

Disability Services offers a range of services including note-taking support, reader/writers for tests or exams, New Zealand sign language interpreters, and we can provide lecture materials eg, hand-outs, notes, overheads etc. in alternative formats such as Braille, large print or audio formats on CDs. Wheelchair access is available to all buildings and lecture theatres. There are toilet facilities with wheelchair access on campus. FM systems may be provided on loan.

The Faculty of Education Outreach Coordinator for Staff and Students with Disabilities is your point of contact for information on the support available to students with impairments.

Speech-language therapist

Assistance is available at Epsom Campus to any student who would like to work on developing skills and confidence in voice, speech, language or oral communication. You can also get information and advice about all aspects of spoken language, including speech and language development and disorders.

International student support

The international team at the Faculty of Education invites you to use its services at any time. It offers support with academic matters, pastoral matters and personal matters where able. The international team works with the University’s International Office, the faculty’s Student Centre, lecturers and other staff to ensure that your time in New Zealand is as productive and pleasant as possible.

Health Centre

The Health Centre is a full general practice at the Epsom Campus for student and staff use. There is also a general medical practice, a dental health clinic and a physiotherapy centre at the City Campus.

Counselling service

Counselling offers an opportunity for you to talk to someone who will listen without criticism and assist you to decide on a course of action. University counselling is a totally confidential, free service available to all students.

Childcare

Epsom campus has both an early childhood centre for children aged six months to five years and a Māori medium early childhood centre - Te Puna Kohungahunga - located on campus. Early childhood centres are also located at City and Grafton Campuses.

Career planning

Our Careers Centre at City Campus aims to guide you towards a rewarding career. Experienced staff teach valuable job hunting, CV writing and career planning skills, and familiarise you with the job market.

Student relaxation

Cafés and other student relaxation spaces are located at all Auckland campuses. The student café and surrounding area at Epsom Campus is a great place to take a break, get something to eat or drink (or enjoy your own) and socialise. At Tai Tokerau Campus, there’s a student space as well as plenty of other areas to take a break and relax.

Student Centre

The faculty’s Student Centre, based at Epsom Campus with representatives at Tai Tokerau Campus and Manukau Institute of Technology, is the first stop for all programme administration requirements. Student Centre consultants will support you with everything from application, enrolment, fee payments and timetables, right through to completions for graduation.

The Student Centre, in collaboration with city services, provides current information about programmes, study grants, student loans, allowances and scholarships. A recognition of prior academic study (ROPAS) service is also offered.

Contact us

If you have any questions about the student services available, contact the Faculty of Education Student Centre:

Phone: 0800 61 62 63

Email: education@auckland.ac.nz

How do you get in?

To study at The University of Auckland you must have a university entrance qualification and be selected into a programme. The following pages explain the different university entrance qualifications and what you need for selection into Faculty of Education undergraduate programmes.

Please note that the information in this section (pp34-36) applies to New Zealand and Australian citizens and permanent residents. International students should refer to www.auckland.ac.nz/international or call +64 9 373 7513. Entry criteria for the Graduate Diploma in Teaching programmes and Foundation Certificates differ to the undergraduate degree and diploma programme entry criteria below. Please refer to the individual programme pages in this prospectus for entry criteria for these programmes.

General admission information

Minimum age

You normally must have reached the age of 16 years by 31 December in the year preceding that in which admission is sought, to be eligible for admission to The University of Auckland.

English language requirements

You must meet certain standards of English language proficiency. You will meet these if English is your first language, or if you have a New Zealand University Entrance qualification (eg, from NCEA or CIE). In the case of Māori immersion programmes, you must meet certain standards of te reo Māori and English language proficiency.

Equity groups of students

We are committed to providing equal opportunities to all who have the potential to succeed at The University of Auckland. All faculties are committed to increasing the participation and success of students from equity groups, including students from low socio-economic backgrounds, students with disabilities, Māori and Pacific students.

Admission from New Zealand secondary school qualifications in 2011

To be admitted to the University, school leavers must have a university entrance qualification based on NCEA, CIE, IB or another recognised, equivalent qualification. You must also meet the admission requirements and be selected into your programme(s) of study.

Approved subjects and required subjects

Approved subjects are subjects approved by the New Zealand Qualifications Authority (NZQA) for university entrance. For a list of approved subjects contact your school or visit the NZQA website www.nzqa.govt.nz/ncea

Required subjects are approved subjects that the University requires you to have studied before you can be considered for selection into some programmes. There are no required subjects for admission to the Faculty of Education undergraduate programmes.

Rank scores for all applicants

All undergraduate programme applicants will be given a rank score. The table on p36 shows the rank scores required for guaranteed entry in 2011 and any other requirements you need for admission and selection into The University of Auckland's undergraduate programmes in the Faculty of Education.

Guaranteed admission

If you meet the University Entrance Standard, the rank score and the other requirements for your programme or programmes, you will be offered a place.

Other admission categories

Special Admission

If you are over 20 on the first day of semester, are a New Zealand or Australian citizen or permanent resident, and have no formal university entrance qualification, you may be eligible for Special Admission. If admission is approved, you may be considered for selection for your chosen programme in the Faculty of Education.

You will need to consult with the faculty before applying for courses or programmes. Evidence of other study or work skills will need to be provided with your application. You will also need to meet the "other requirements" as listed on p36.

Discretionary Entrance

If you are applying for Discretionary Entrance you will be assessed on the basis of your academic background and an adviser's recommendation. Discretionary Entrance is based on the National Certificate of Educational Achievement (NCEA) Level 2 (or higher) and is available to applicants who have gained exceptional results in Year 12 and wish to embark on university study. Applicants must also be selected into the programme for which they have applied.

Recognition of previous academic study (ROPAS)

The University of Auckland accepts applications from students who wish to transfer from other tertiary institutions. If you are a New Zealand or Australian citizen or permanent resident and have studied at another tertiary institution in New Zealand or overseas we will need to assess your results to determine your eligibility for admission to The University of Auckland. At the time of application, you may also apply for credit for courses completed elsewhere. If you have studied at secondary level overseas you may need to have your study assessed, and you should contact the Student Information Centre.

More information

For more information or help with understanding our admission requirements contact:

Student Information Centre

Phone: 0800 61 62 63 or +64 9 923 1969
www.auckland.ac.nz/admission

The University of Auckland has taken all steps to ensure that the information on these pages is correct but please note that changes may occur. Please refer to www.auckland.ac.nz or call 0800 61 62 63 for updated information.

National Certificate of Educational Achievement (NCEA) Level 3

The University Entrance Standard

You will be qualified for entrance to New Zealand universities in 2011 if you have obtained:

- a minimum of 42 credits at Level 3 or higher on the National Qualifications Framework, including a minimum of 14 credits at Level 3 or higher in each of two subjects from the approved subject list, with a further 14 credits at Level 3 or higher taken from no more than two additional domains on the National Qualifications Framework or approved subjects

PLUS

- a minimum of 14 credits at Level 1 or higher in Mathematics or Pāngarau on the National Qualifications Framework

PLUS

- a minimum of 8 credits at Level 2 or higher in English or te reo Māori; 4 credits must be in Reading and 4 credits must be in Writing. These literacy credits are to be selected from a schedule of approved achievement standards and unit standards.

To be admitted to The University of Auckland you must gain the University Entrance Standard and be selected into a programme.

Admission requirements

You must meet the admission requirements for your programme(s) of study. In addition to achieving university entrance, our undergraduate programmes have other requirements such as referees' reports and/or an interview.

How your rank score is calculated

You will be allocated a rank score based on your best 80 credits at Level 3 or higher over a maximum of five approved subjects, weighted by the level of achievement attained in each set of credits.

If you achieve fewer than 80 credits, the rank score will be based on those credits you have gained at Level 3 over a maximum of five approved subjects and weighted by the level of achievement.

- The rank score will be calculated by awarding the following points for up to 24 credits in each approved subject taken at Level 3 in the last two years. The maximum rank score is 320.

Excellence	4 points
Merit	3 points
Achieved	2 points

- Credits obtained in any required subjects do not have to be among the best 80 credits used for ranking purposes.
- NCEA Level 3 credits achieved in Year 12 may be counted towards the 80 best credits used for ranking purposes.
- Level 3 subject requirements for a specific programme may be met in Year 12.
- You are strongly encouraged to take achievement standards as preparation for University study.

Example of how a rank score for NCEA Level 3 is calculated

Subject	Standard Type	Results	Calculate	Score
English	Achievement and Unit	6 Excellence 6 Merit 16* Achieved	6 x 4 points 6 x 3 points 12* x 2 points	66
History	Achievement	8 Excellence 10 Achieved	8 x 4 points 10 x 2 points	52
Physics	Achievement	24 Merit	24 x 3 points	72
Mathematics with Calculus	Achievement	4 Excellence 3 Merit 8** Achieved	4 x 4 points 3 x 3 points	25
Statistics and Modelling	Achievement	7 Merit 10** Achieved	7 x 3 points	21
Economics	Achievement	6*** Achieved	Not counted***	Nil

Rank score

236

*Maximum 24 credits per subject. Any points above this limit are excluded.

**Not included as only best 80 credits used in calculation of rank score.

***Only five subjects are included in the calculation.

Cambridge International Examinations (CIE)

The University Entrance Standard

- 120 points* on the UCAS Tariff including a minimum grade of "D" in each of at least two subjects equivalent to those in the list approved for NCEA at AS or A Level; plus a minimum grade of "D" in one further subject either from the approved list or related to a domain on the National Qualifications Framework at AS or A Level

PLUS

- a "D" pass or higher in IGCSE Mathematics

PLUS

- an "E" pass or higher in AS English.

*Should an applicant obtain three "D" grades, totalling fewer than 120 UCAS Tariff points, the applicant may include points from any one additional subject available for CIE to make up the difference between 90 and 120 points.

Admission requirements

You must meet the admission requirements for your programme(s) of study. In addition to achieving university entrance, our undergraduate programmes have other requirements such as referees' reports and/or an interview.

How your rank score is calculated

You will be ranked according to your UCAS Tariff score total accumulated over a maximum of six subject units in the last two years, in subjects at AS, A2 or A Level from subjects that match those of NCEA.

- The rank score will be calculated from your UCAS Tariff points by awarding the following points for each approved subject (to a maximum of six subject units). The maximum rank score is 360.

Level	A	B	C	D	E
AS	60 points	50 points	40 points	30 points	20 points
A	120 points	100 points	80 points	60 points	40 points

- An A Level counts as two subject units. Where a student has studied more than six subject units the best six scores will be used.
- A CIE rank score may differ from the UCAS Tariff used for university entrance because only subjects equivalent to approved NCEA subjects are used for ranking.

Example of how a rank score for CIE is calculated					
Subject	Level	Subject units	Results	Tariff points	Score
Chemistry	A	2	B	100	100
Mathematics	A	2	B	100	100
Physics	AS	1	B	50	50
English	AS	1	C	40	40
Biology	AS	1	D	30	Nil*
Rank score					290
<i>*Maximum six subject units. If more are achieved, the best six scores are used.</i>					

International Baccalaureate (IB)

If you are applying for admission to The University of Auckland in 2011 based on International Baccalaureate, you will be required to meet the following entrance standard, as established by the New Zealand Vice-Chancellors' Committee (NZVCC).

To be admitted to The University of Auckland you must gain the University Entrance Standard and be selected into a programme.

The University Entrance Standard

An applicant will be deemed to be eligible for admission if they have been awarded the full International Baccalaureate Diploma (24 points minimum).

Admission requirements

You must meet the admission requirements for your programme(s) of study. In addition to achieving university entrance, our undergraduate programmes have other selection requirements such as referees' reports and/or an interview.

How your rank score is calculated

You will be ranked according to your IB score. For example, if you achieve 27 points for IB, your rank score will also be 27 points.

What if you don't achieve the rank score for guaranteed admission?

If you achieve the University Entrance Standard but do not achieve a rank score that will guarantee selection into the programme you wish to study, your application will be given individual consideration.

Selection may take into account the following factors according to the programme you are applying for:

- your performance in relevant subjects
- eligibility for a targeted admission scheme
- results of an interview where deemed appropriate to determine your potential for success in the programme.

If you are successful in gaining a place, you may have conditions placed on your enrolment.

If you are not offered a place in your preferred programme, you could consider other possible programmes at The University of Auckland.

Some late applications may be accepted after 2010 school results are received. It is advisable, however, to apply for all programmes that you might wish to study before the closing date of 1 December 2010. Multiple applications are acceptable and all applications will be considered when 2010 academic results are available.

Other pathways to The University of Auckland

We have alternative pathways that are designed to bridge the gap between your secondary school studies and University.

- Foundation Certificate Education (see p29)
- Foundation Certificate Tohu Tūāpapa Mātauranga (see p30)

Successful completion of either of these foundation certificates allows admission to The University of Auckland for Faculty of Education undergraduate programmes. Applicants will be offered a place provided they are successful in the selection process (see "other requirements" below).

Faculty of Education undergraduate programme admission requirements for school leavers who are New Zealand or Australian citizens or permanent residents. International students will be required to achieve higher rank scores.

This table indicates the rank score for guaranteed admission in 2011 and the other requirements that will gain you admission to your programme. Please refer to pp34-36 for an explanation of NCEA, CIE and IB and how your rank score will be calculated.

Programme	NCEA (Level 3)	CIE	IB	Other requirements
Bachelor of Education (Teaching) (BEd(Tchg)) ²	140	130	24	Interview, literacy assessment and referees' reports. Applicants must be capable of meeting the requirements of the New Zealand Teachers Council ¹ including language proficiency.
Bachelor of Human Services (BHumServ) ²	140	130	24	Interview and literacy assessment. Referees' reports and other checks on suitability are required.
Bachelor of Physical Education (BPE) ²	140	130	24	Interview, literacy assessment and referees' reports. Applicants must be capable of meeting the requirements of the New Zealand Teachers Council ¹ including language proficiency.
Bachelor of Social Work (BSW) ²	140	130	24	Interview, literacy assessment and referees' reports. Applicants must be capable of meeting the requirements of the Social Workers Registration Act.
Diploma of Teaching (DipTchg) ²	140	130	24	Interview, literacy assessment and referees' reports. Applicants must be capable of meeting the requirements of the New Zealand Teachers Council ¹ including language proficiency.

1. If you are applying for a teaching programme, you must demonstrate the potential to meet the New Zealand Teachers Council (NZTC) criteria for provisional registration, which involves making a declaration of criminal convictions and a declaration of health conditions.

2. Māori and Pacific school leaver applicants who achieve the UE Standard and meet the other requirements will be admitted.

Money matters

Costs

Fees for 2011 are expected to be set later in 2010. For an indication of costs, the tuition fees for 2010 (for students enrolled full-time in 120 points except where indicated) are listed in the table below. Some adjustment for 2011 is expected.

In addition to tuition fees, students also pay a student services fee and a building levy.

For a true indication of how much it will cost you to study, take a look at the fees for your programme, then factor in costs such as textbooks, accommodation, transport and other living expenses.

When fees for 2011 are set, updated information will be available at www.auckland.ac.nz/fees

Financial assistance

There are various options available to help you fund your university study. Student loans and allowances are available through StudyLink, and the University offers several scholarships and awards to help get you started.

Scholarships and awards

The University of Auckland has a wealth of scholarships and awards available to students at all levels of study. Visit www.auckland.ac.nz/scholarships for a full list of undergraduate scholarships and awards.

TeachNZ scholarships are targeted at areas of priority for teacher supply, in order to meet increasing demand for teachers in some areas over the next ten years. Currently, these areas are early childhood and Māori medium teachers, secondary teachers of specific subjects and teachers in rural areas. For more information visit www.teachnz.govt.nz or call 0800 TEACHNZ.

Student allowances

The student allowance is a weekly payment to help with a student's living costs while in full-time study on an approved programme. It is available to New Zealand citizens and permanent residents who have held New Zealand residency for at least two years. For more information contact StudyLink on 0800 88 99 00 or visit www.studylink.govt.nz

Student loans

To be eligible for a student loan, you must be a New Zealand citizen or have been granted permanent resident status. You must be studying full-time for a minimum of 12 weeks, or part-time for a full year, at an approved tertiary institution. You may apply for tuition fees, course related costs (for example, books, stationery and travel) and living costs (living costs are not available to part-time students). Applications for loans should be made at least one month before study begins. Full information is available by contacting StudyLink on 0800 88 99 00 or visit www.studylink.govt.nz

Unemployment Benefit - Student Hardship

Student allowances and loans are only available to students during the period of their enrolment. If you are not studying over the summer break, and cannot find a job to support yourself, you may be eligible for the Unemployment Benefit - Student Hardship. You generally need to be eligible for a student allowance during your study to be eligible for the benefit, but there are additional hardship criteria that may be applicable if you don't qualify for the allowance. Full information is available from StudyLink on 0800 88 99 00 or www.studylink.govt.nz

Hardship support

The University of Auckland can also offer hardship support assistance for students whose studies are threatened by financial hardship. This includes Student Emergency Fund (SEF) assistance (where appropriate) in the form of a targeted grant. Eligibility criteria apply. Email: scholarships@auckland.ac.nz for a SEF form.

Other emergency hardship support may also be accessed through the faculty and students' association. Contact the student association (ETSA) administrator for an application form.

Work, study and practicum

Before committing to a part-time (or full-time) job, you should find out whether you are expected to undertake practicum or professional placements as part of your study. This may affect your ability to work certain hours during parts of the year.

Remember also that it's important to strike a balance between the number of hours you work and the requirements of your university study.

Indicative tuition fees

Please note this table shows 2010 fees and provides a guide only. Adjustment for 2011 is likely.

	Domestic Students	International Students
Bachelor of Education (Teaching) Early Childhood Education specialisation	\$4,501	\$21,000
Bachelor of Education (Teaching) Early Childhood Education Pasifika specialisation	\$4,501	\$21,000
Diploma of Teaching (Early Childhood Education)	\$4,501	\$21,000
Diploma of Teaching (Early Childhood Education) Pasifika specialisation	\$4,501	\$21,000
Graduate Diploma in Teaching (Early Childhood Education) <i>full-time load 150 points</i>	\$7,073	\$30,750
Bachelor of Education (Teaching) Primary specialisation	\$4,501	\$21,000
Bachelor of Education (Teaching) Huarahi Māori specialisation	\$4,501	\$21,000
Graduate Diploma in Teaching (Primary) <i>full-time load 160 points</i>	\$7,544	\$25,280
Bachelor of Physical Education	\$4,501	\$21,000
Graduate Diploma in Teaching (Secondary)	\$5,658	\$18,960
Bachelor of Social Work	\$4,501	\$21,000
Bachelor of Human Services	\$4,501	\$21,000
Foundation Certificate Education	\$548	n/a
Foundation Certificate Tohu Tūāpapa Mātauranga	\$548	n/a

In addition to tuition fees, students pay a student services fee and a building levy. In 2010 (for a student enrolled full-time in 120 points) these fees were:

Student services fee	\$468.00
Building levy	\$74.40

All of these fees are charged on a per-point basis, so students taking less/more than 120 points will pay proportionately lower/higher fees.

Dates to remember

Closing date for applications

Graduate Diploma in Teaching (ECE and Primary)	1 November 2010
All other faculty programmes	1 December 2010

Due to the high demand for Faculty of Education programmes in recent semesters, we recommend that applications are submitted, in full, as early as possible.

There may also be a mid-year intake in 2011 for some programmes. Applications for admissions into 2011 mid-year programmes close on 1 June 2011.

Applications received after the closing dates may be considered if there are places available.

Please contact the Faculty of Education for updated information.

Faculty of Education Open Evening

Wednesday 18 August 2010 4pm - 7.30pm

Visit us at the Faculty of Education's Epsom Campus to find out all you need to know about our undergraduate programmes.

This is your opportunity to have a look around the campus, talk with staff and current students, attend information sessions and get answers to all those questions you may have.

You'll also get information on the student support services we offer, our foundation certificates, admission and enrolment advice. Representatives from StudyLink will be available to answer your questions about student loans and allowances. TeachNZ representatives will also be at the Open Evening with information on TeachNZ scholarships and allowances.

Courses and Careers Day

Saturday 28 August 2010

This is a good chance to visit the University's City Campus and experience campus life. Enjoy lectures, displays, interactive events and entertainment.

Find out about all the qualifications and programmes offered by the University. Student support staff will be on-hand to answer all your questions and give advice on courses, enrolment and entry requirements.

Visit www.education.auckland.ac.nz for more information on other upcoming events and news.

Programme induction days 2011

Induction days for new students are held at the beginning of each semester and usually take place the week before lectures start. Once you are enrolled in a programme, you will receive information on when the induction day for your programme will be held. Induction days are compulsory and it is essential that you attend the induction day for your programme.

A powhiri is held to formally welcome you and your fellow students onto the campus. You also receive essential course information and advice, meet some of your lecturers as well as fellow students who will be studying the same programme as you. Make sure you take note of when the induction day for your programme will be held.

The University of Auckland's "Orientation Week" is a highlight for most students and there are plenty of social activities, cultural events and other events held on and off campus to keep you entertained.

Academic year 2011

Academic year 2011	
Summer School – 2011	
Lectures begin	Thursday 6 January
Auckland Anniversary Day	Monday 31 January
Waitangi Day	Sunday 6 February
Lectures end	Friday 11 February
Study break/exams	Monday 14 February - Wednesday 16 February
Summer School ends	Wednesday 16 February
Semester One – 2011	
Semester One begins*	Monday 28 February
Mid-semester break**/Easter	Monday 11 April - Tuesday 26 April
ANZAC Day	Monday 25 April
Graduation	Thursday 28 April - Friday 6 May
Lectures end	Saturday 4 June
Study break/exams	Saturday 4 June - Monday 27 June
Queen's Birthday	Monday 6 June
Semester One ends*	Monday 27 June
Inter-semester break	Tuesday 28 June - Saturday 16 July
Semester Two – 2011	
Semester Two begins*	Monday 18 July
Mid-semester break**	Monday 29 August - Saturday 10 September
Graduation	Tuesday 20 September - Thursday 22 September
Lectures end	Saturday 22 October
Study break/exams	Saturday 22 October - Monday 14 November
Labour Day	Monday 24 October
Semester Two ends*	Monday 14 November
Semester One – 2012	
Semester One begins	Monday 27 February 2012

* Semester start and end dates differ for the Graduate Diploma in Teaching (ECE) and the Graduate Diploma in Teaching (Primary).

** Mid-semester break dates differ for teaching programmes.

Contact the University for the dates specific to your chosen programme.

Disclaimer

Although every reasonable effort is made to ensure accuracy, the information in this document is provided as a general guide only for students and is subject to alteration. All students enrolling at The University of Auckland must consult its official document, the current Calendar of The University of Auckland, to ensure that they are aware of and comply with all regulations, requirements and policies.

How to apply

1. Enquire

Visit www.education.auckland.ac.nz or contact our student advisers for any information you need.

Phone: 0800 61 62 63 or +64 9 923 1969 **Email:** education@auckland.ac.nz

Faculty of Education Student Centre: A Block, Gate 3, 74 Epsom Avenue, Epsom, Auckland



2. Apply (make sure you apply as early as possible)

Do you have internet access, or can you come on to campus? (Make sure you apply by the closing date.)



Yes

- Visit www.auckland.ac.nz
- Click on "Apply Now".
- Complete the online application for Entrance to the University indicating the programme(s) of your choice

No

Phone: 0800 61 62 63

Email: studentinfo@auckland.ac.nz

The ClockTower Call Centre will forward the required information to you.

3A. For Entrance to the University

Receive acknowledgement letter



Provide requested details for Entrance to the University



Log on as instructed to track processing of application



Admissions Office verifies your eligibility for Entrance to the University (may depend on NCEA results) etc.



Entrance not granted



Entrance granted

Consider Foundation Certificate. Contact the Faculty of Education.

3B. For selection into Faculty of Education programmes

Download and submit Supplementary Information Form from www.education.auckland.ac.nz under Quick Links



Provide all Supplementary Information for programme selection



Attend literacy assessment and/or interview as requested (note the faculty may not interview all candidates)



Selected



Not selected



You will receive an offer of place in the programme (may be conditional on specific requirements being met)



Accept or decline within 10 working days



Complete enrolment as advised by faculty



Pay your fees



Congratulations. You are now a student at The University of Auckland.

Please make sure you complete both 3A and 3B of the application process (concurrently)

Contact

Faculty of Education
The University of Auckland
Private Bag 92602
Auckland 1150
New Zealand

Phone: 0800 61 62 63 or +64 9 923 1969

Fax: +64 9 623 8950

Email: education@auckland.ac.nz

Web: www.education.auckland.ac.nz

International students

Contact: Auckland International
The University of Auckland
Private Bag 92019, Auckland
New Zealand

Phone: +64 9 373 7513

Fax: +64 9 373 7405

Email: int-questions@auckland.ac.nz

Web: www.auckland.ac.nz/international

Faculty of Education**Epsom Campus**

74 Epsom Ave, Epsom, Auckland

Tai Tokerau Campus

13 Alexander Street, Whangarei

The University of Auckland at**Manukau Institute of Technology**

Gate 11, NQ Block, Room NQ 227,

Otara Road, Otara, Manukau City

Phone: +64 9 968 8765 ext 7361