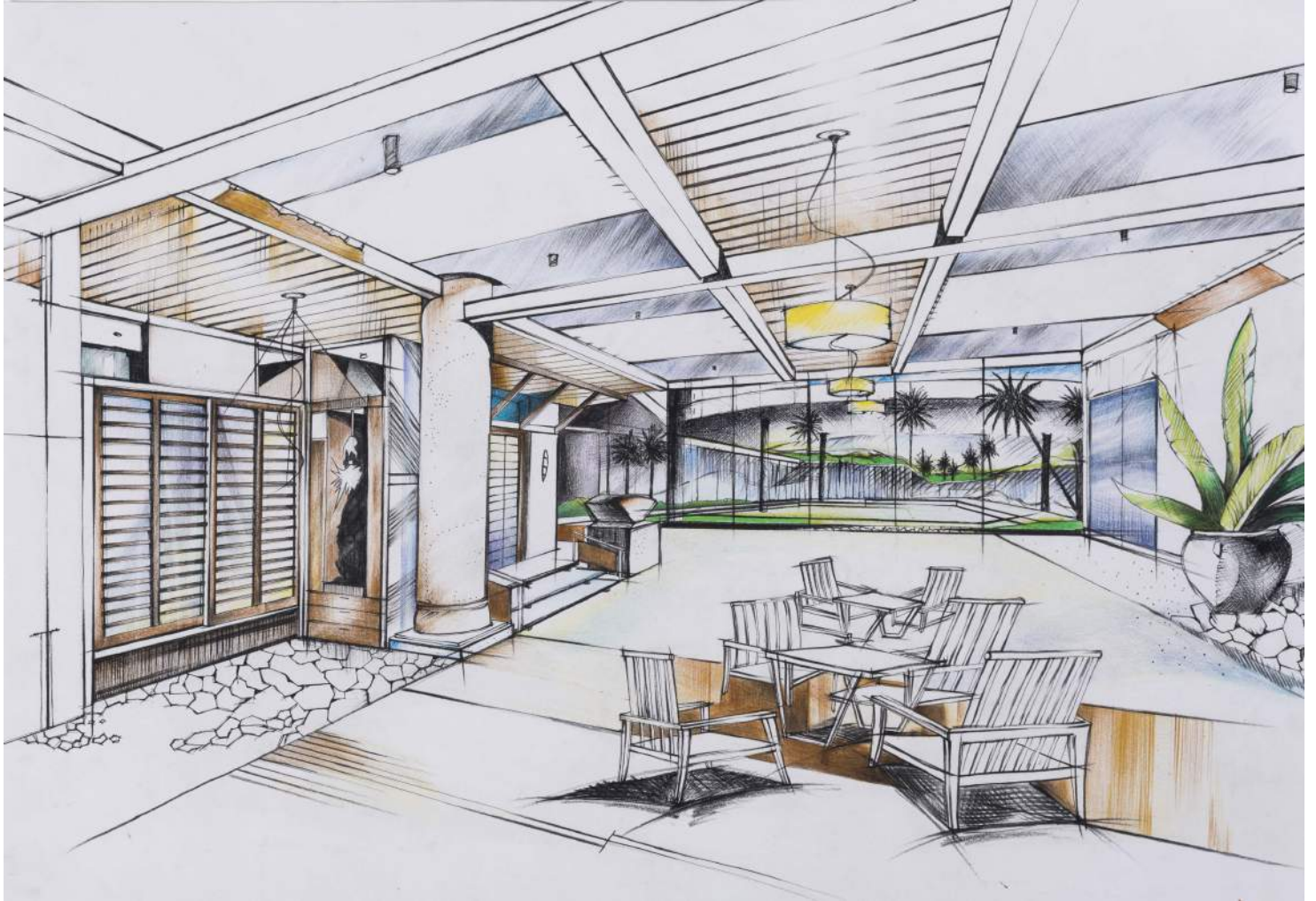


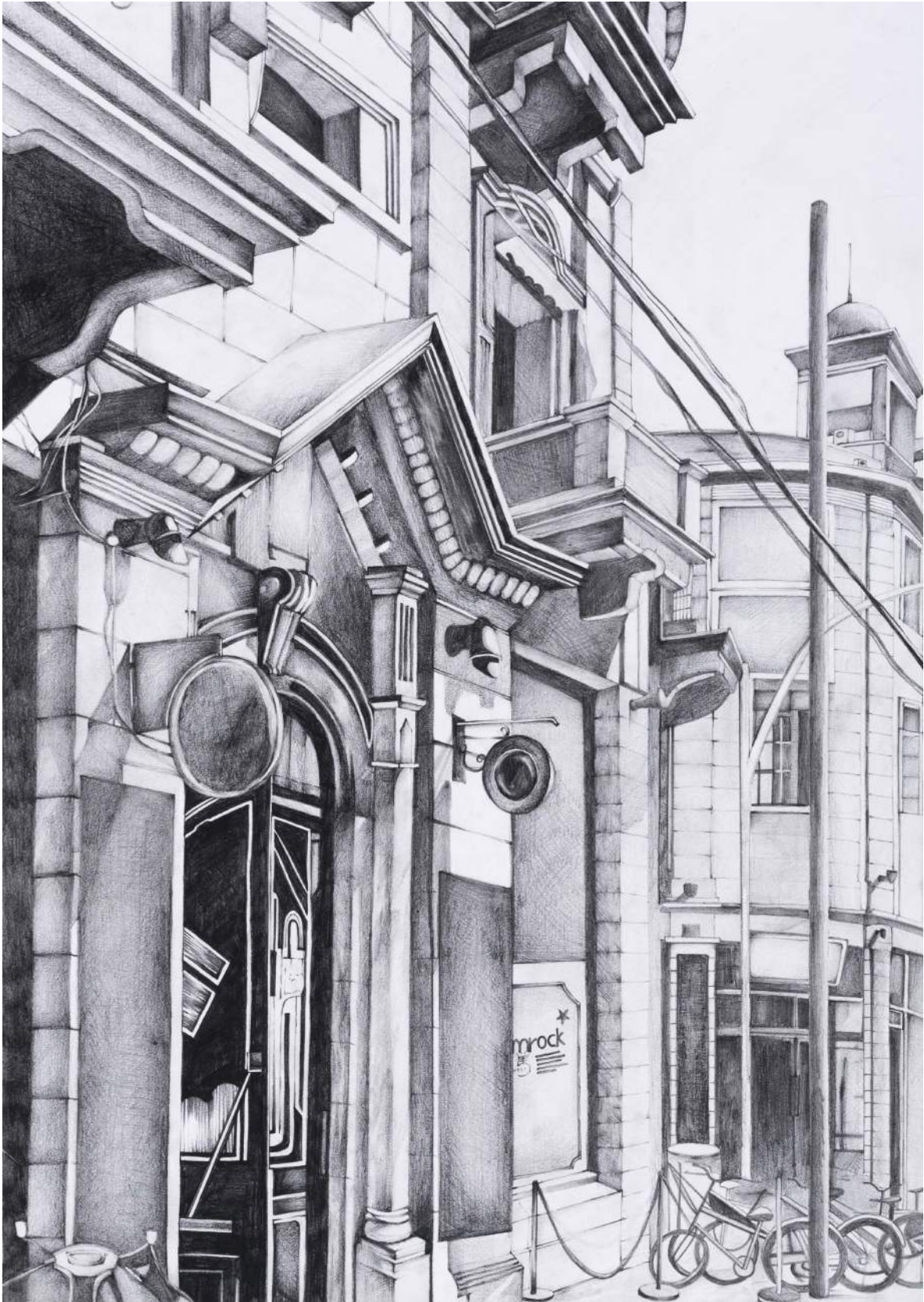
Architecture Sample Portfolio



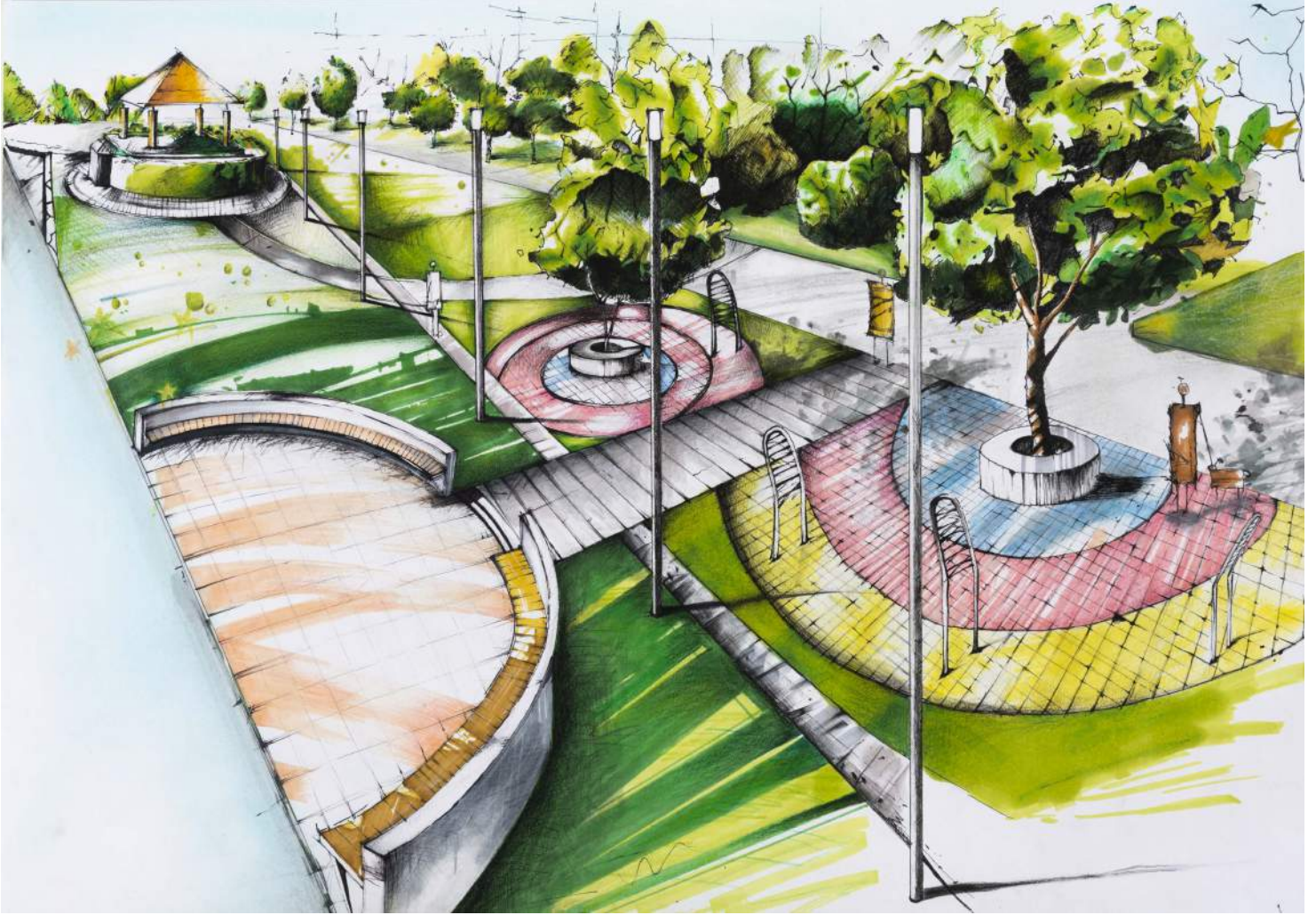


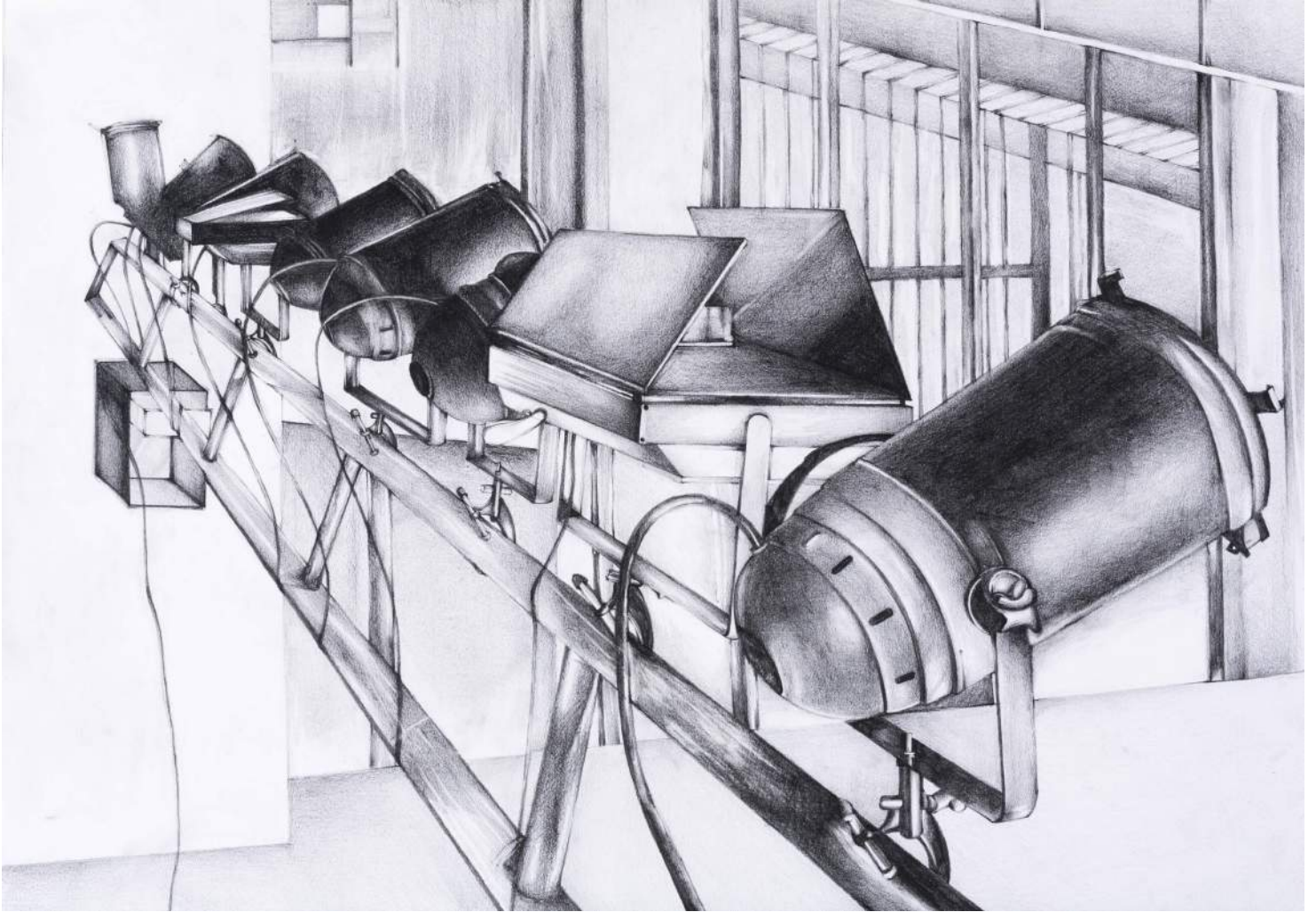








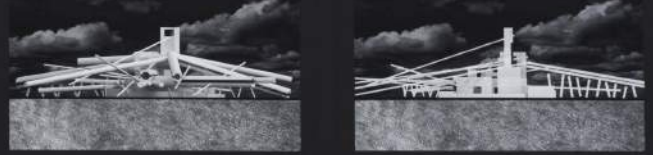




VIEWS FROM DIFFERENT DIRECTIONS



TWO ELEVATIONS



CLOSE UP VIEW OF MAZE THING

It shows the interior view of my installation placed at the middle. Flowing water in pipes reflects the sun and the green landscape to create beauty. They would feel like they are in nature. So all people to have the nature at aspect 1 and 2 around at the park.

SEPERATED INTO 3 PARTS

Small pipes are not hollow inside. They are just decorations. I wanted to make the whole thing stream easy appearance.

SMALL WATER PIPES

There are the real water pipes when actual water flows, I wanted to people to know the exibility of water pipes under ground. Placed glass on some of them.

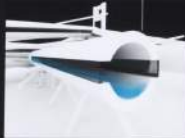
BIG WATER PIPES

Main installation. Purpose is to bring people the water beneath at express quarter at park. By putting water covered with glass and mirror reflect water so that people could see it like they are in water.

MAIN INSTALLATION

CLOSE UP VIEW OF WATER PIPE

Some of water pipes are opened at the end and no water will fall. As it shows they are covered with glass so that people can see inside.



PIECES FROM OLD

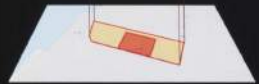
I've checked to recycle objects in my park quarter into materials for my design. I made up with concrete, cardboard, glass and form. Then they're made up with made shape.



STE - WYNWARD QUARTER

PORTABLE WHITE PLASTIC

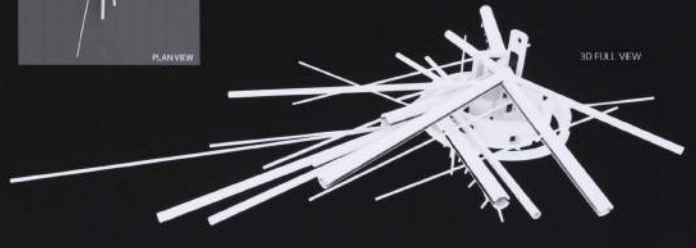
These are made up of blue plastic. Making into concrete would make my design to being some there are so many of pipes. must be able to relocate to other area.



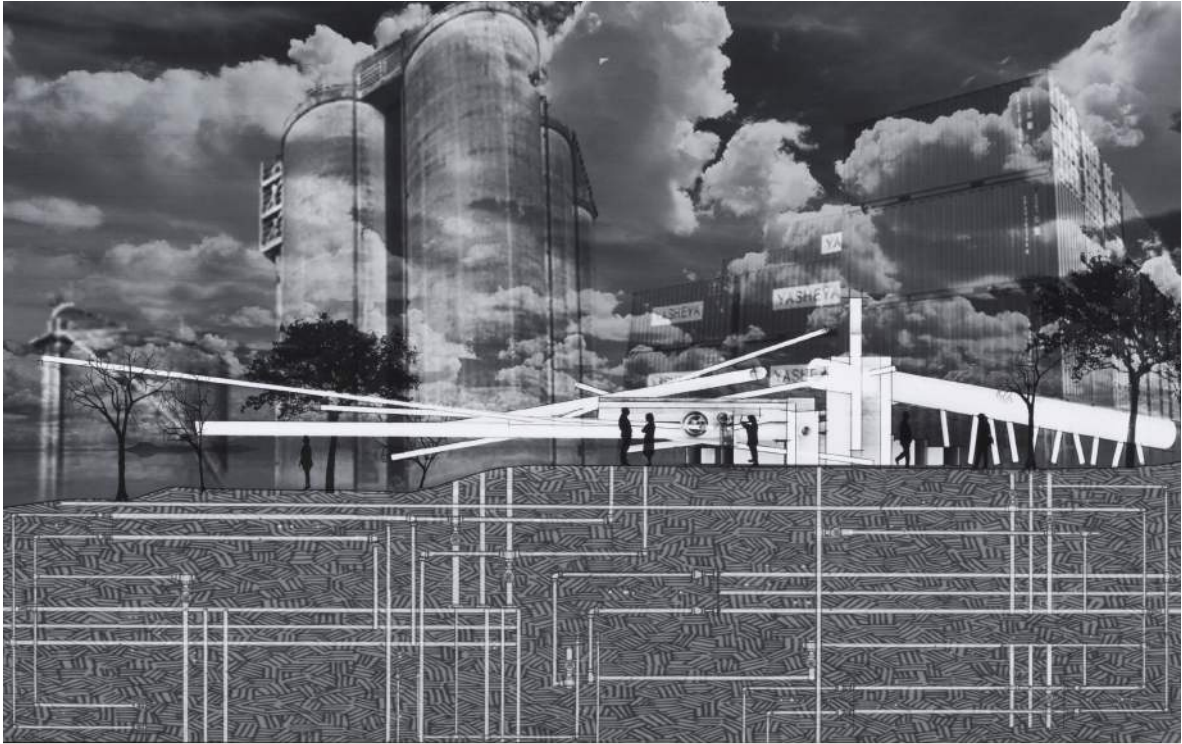
There certain area that I've checked to locate my design shown on image above. Right beside the 10-1000.



PLAN VIEW



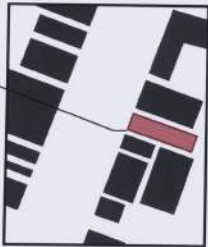
3D FULL VIEW



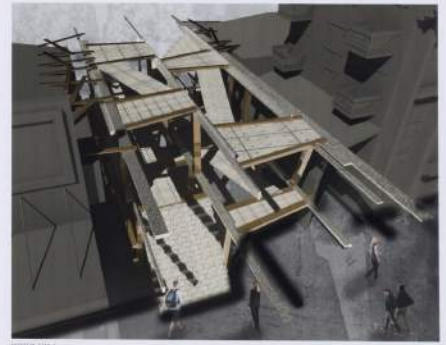
PARASITIC ARCHITECTURE - SPRINGS STAGES
 ALL CAPTION HERE - BETWEEN THE EXISTING WALL AND WALL FOR DAY TO DAY



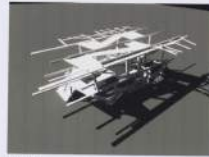
THEY ARE BUILT ON THE
 BETWEEN EXISTING WALL AND WALL FOR DAY TO DAY
 NOT OFFERING IN WALLS A PARASITIC ARCHITECTURE
 PROTECTING THE EXISTING WALLS AND BUILDINGS STRUCTURE



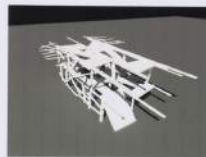
SECTION VIEW 1



SECTION VIEW 2



SECTION 3



SECTION 4



SECTION 5



SECTION 6



WATERFALL

DARK COPPER METAL



WHITE CONCRETE



WHITE CONCRETE



WHITE CONCRETE



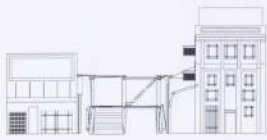
INTERIOR VIEW 1



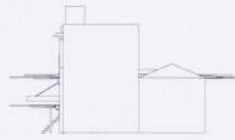
INTERIOR VIEW 2



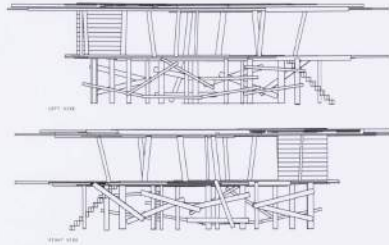
INTERIOR VIEW 3



01 ELEVATION

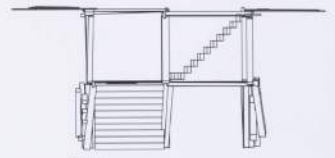


02 ELEVATION

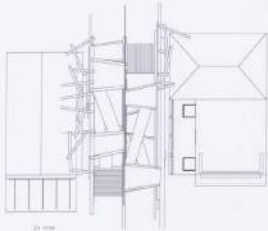


03 SECTION

04 SECTION



05 SECTION



06 SECTION

07 SECTION

