

School of Music

EVENTS



THE UNIVERSITY OF
AUCKLAND
Te Whare Wānanga o Tāmaki Makaurau
NEW ZEALAND

**CREATIVE ARTS
AND INDUSTRIES**

School of Music EVENTS CALENDAR 2016

March

Tuesday 8 March, 8pm
Christopher Hinterhuber
MT, \$15-\$20 / p.2

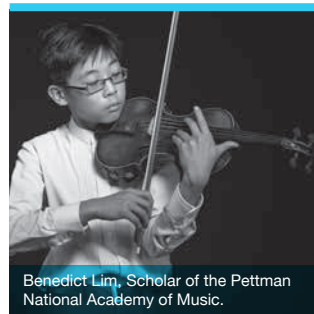
April

Sunday 3 April, 5pm
Sundays@5 //
Abigail Sperling
MT, Free admission / p.4

Thursday 14 April, 7.30pm
Lawrence Arabia in
Collaboration
KMC, Free admission / p.2

Wednesday 20 April
Pettman National Junior
Academy of Music
MT, Free admission / pp.12-13

Wednesday 27 April, 3-6pm
Process Dilla
KMC, Free admission / p.2



Benedict Lim, Scholar of the Pettman National Academy of Music.

May

Thursday 12 May, 7.30pm
Graduation Gala Concerto
Competition 2016
ATH, Free admission / p.8

Sunday 15 May, 5pm
Sundays@5 //
Karlheinz Company
MT, \$15/\$20 / p.4

Sunday 22 May, 5pm
Sundays@5 // Maria Mo
MT, Free admission / p.4

Sunday 29 May, 5pm
Sundays@5 // Kufferath
| Almonte | Grodd |
Salzmann
MT, \$15/\$20 / p.4

June

Wednesday 1 June, 3-5.30pm
Allyson | LaBarbera |
Koonse | Warrington
KMC, Free admission / p.2

Wednesday 1 June
Pettman National Junior
Academy of Music
MT, Free admission / pp.12-13

Friday 3 June, 7.30pm
Auckland Chamber Choir
MT, \$15/\$20 / p.3

Tuesday 7 June, 10am-7pm
Songwriter Workshop
KMC, Free admission / p.15

Wednesday 8 June, 10am-7pm
Songwriter Workshop
KMC, Free admission / p.15



July

Thursday 7 July
Wallace National Piano
Festival
MT, Refer to website / p.9

Friday 8 July
Wallace National Piano
Festival
MT, Refer to website / p.9

Saturday 9 July
Wallace National Piano
Festival
MT, Refer to website / p.9

Sunday 10 July
Wallace National Piano
Festival
MT, Refer to website / p.9

Friday 15 July
SoundDome '16
KMC, \$15/\$20 / p.3

Friday 22 July, 1pm
Zephyr Wind Quintet
MT, Free admission / p.3

Sunday 24 July, 5pm
Sundays@5 // Collegium
Musicum
MT, Free admission / p.5

August

Sunday 7 August, 5pm
Sundays@5 //
Nicholas Isherwood
KMC, \$15/\$20 / p.5

Thursday 11 August, 7pm
Popular Music Showcase
KMC, Free admission / p.3

Saturday 13 August, 1-4pm
Jazz Combo Series
KMC, \$100 / p.15

Sunday 14 August, 5pm
Sundays@5 // Atchison |
Johnsson | Fuller
MT, \$15/\$20 / p.5

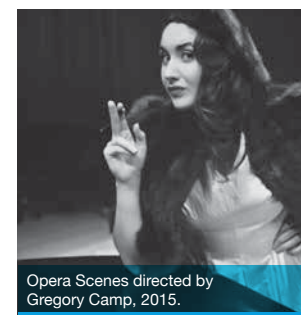
Saturday 20 August
Jazz Combo Series
cont. / p.15

Saturday 27 August
Jazz Combo Series
cont. / p.15

Sunday 28 August, 5pm
Sundays@5 // Ensembles
in Concert
MT, Free admission / p.5



Jazz students in rehearsal at the School of Music.



Opera Scenes directed by Gregory Camp, 2015.

September

Friday 16 September, 7.30pm
Opera Scenes
MT, \$15/\$20 / p.10

Saturday 17 September,
7.30pm
Opera Scenes
MT, \$15/\$20 / p.10

Sunday 18 September, 5pm
Sundays@5 // Jason Bae
MT, \$15/\$20 / p.5

Thursday
22 September, 7.30pm
Tami Neilson in
Collaboration
KMC, Free admission / p.3

Friday 23 September
Pettman National Junior
Academy of Music
MT, Free admission / pp.12-13

Wednesday
28 September, 8pm
Cloudburst
ATH, Free admission / p.11

Information is correct at time of print but is subject to change.
For further details visit: www.creative.auckland.ac.nz/events

Venues

MT: Music Theatre, School of Music, 6 Symonds Street, Auckland
KMC: Kenneth Myers Centre, 74 Shortland Street, Auckland
ATH: Auckland Town Hall, 303 Queen Street, Auckland

October

Sunday 2 October, 5pm
Prize Concert // Anna
Nathan Early Music Prize
MT, Free admission / p.6

Saturday 8 October, 7.30pm
Prize Concert // Graham
Allen Musical Theatre
Prize
MT, \$15/\$20 / p.6

Saturday 15 October, 7.30pm
Auckland Chamber Choir
MT, \$15/\$20 / p.3

Friday 14 October, 4pm
Prize Concert // Llewellyn
Jones Piano Composition
MT, Free admission / p.6

Friday 21 October, 7.30pm
Prize Concert // Douglas
Lilburn Trust Composition
MT, Free admission / p.6

Sunday 23 October, 3pm
Prize Concert // Auckland
Chamber Music Society
MT, Free admission / p.6



Associate Professor **Martin Rummel**
Head, School of Music

The School of Music is part of the University of Auckland's creative arts and industries faculty, and is well known across New Zealand for its leading role in the music community, particularly in Auckland, where the School is a key contributor to the cultural prosperity of the city.

Each year the School of Music offers to the public a wide range of concerts and events featuring distinguished staff, guests and outstanding students, as well as events that involve broader collaboration with the arts. We are dedicated to fostering musicianship in young people, and as such, we are proud to be in partnership with the Pettman National Junior Academy of Music (PNJA) in its 10th year, hosting a series of concerts throughout 2016 (see pages 12-13).

EDUCATION

At both undergraduate and postgraduate level, the School of Music provides a vibrant and diverse environment for students to extend their learning in classical and jazz performance, popular music, musicology, composition and studio pedagogy. We provide a range of performance opportunities and actively encourage our students to participate in the local music industry.

Whilst undertaking a creative pursuit is challenging in today's STEM-focused environment, the creative arts and industries are currently thriving in New Zealand and internationally. With your help, our students can make the most of the available opportunities. If you would like to benefit our current students through a prize, award, scholarship or internship, we would love to hear from you.

Contact Heather McAllister, Development Manager
E: h.mcallister@auckland.ac.nz
P: +64 9 923 1792

School of Music Presents

A season of events highlighting the breadth of disciplines of the School of Music and its guests.

Christopher Hinterhuber Piano in Recital

Tuesday 8 March, 8pm

Tickets \$15/\$20

Music Theatre, School of Music

Christopher Hinterhuber | piano | direct from Vienna

With guest artists:

Uwe Grodd - flute, Alison Dunlop - oboe

Nicola Baker - horn, Susan Bierre - viola

Edith Salzmann - cello, Evgueny Lanchtchikov - bass

Wolfgang Amadeus Mozart

Piano Sonata No. 14 in C minor, K. 457 (1784)

Franz Liszt

Fantasy on Themes from Mozart's "The Marriage of Figaro" (1843)

Johann Nepomuk Hummel

Piano Septet in D minor, Op.74 (1816)

Lawrence Arabia in Collaboration

Thursday 14 April, 7.30pm

Free admission

Studio One, Kenneth Myers Centre

Popular music guest mentor James Milne (Lawrence Arabia) is a former winner of the APRA Silver Scroll and the Taité Music Prize. This concert marks the culmination of the Lawrence Arabia collaborative mentorship project with popular music students.

Process Dilla | Performance & Masterclass

Wednesday 27 April, 3-6pm

Free admission

Studio One, Kenneth Myers Centre

This performance and masterclass will be led by drummer and jazz educator Dr Simon Barker (Sydney Conservatorium of Music), accompanied by renowned jazz guitarist Carl Dewhurst. Barker and Dewhurst will deconstruct and engage with the rhythmic forms appearing in contemporary Hip Hop and Neo Soul.

Allyson | Koonse | LaBarbera | Warrington

Wednesday 1 June, 3-5.30pm

Free admission

Studio One, Kenneth Myers Centre

Grammy nominated jazz vocalist and educator Karrin Allyson, will lead this performance and masterclass accompanied by other notable players Larry Koonse (guitar) Tom Warrington (bass) and Joe LaBarbera (drums).

Venus and Mars | Auckland Chamber Choir

Friday 3 June, 7.30pm

Tickets \$15/\$20

Music Theatre, School of Music

The University of Auckland's premier choral ensembles, the Auckland Chamber Choir and Accord women's choir, present a concert of adventurous and beautiful repertoire for Venus (women's voices) and Mars (men's voices).

SoundDome'16

Friday 15 July

5pm | 6pm | 7pm | 8pm | 9pm

Tickets \$15/\$20

Studio One, Kenneth Myers Centre

SoundDome'16 comprises the sonic artwork of Dr John Coulter, and special guests including New Zealand born composer David Downes. Musical genres include: performance-based works with live electronics; multi-channel acousmatic music, visual music; and interactive installation. This concert is 50 minutes in duration, with five available sessions.

Zephyr Wind Quintet at Lunchtime

Friday 22 July, 1pm

Free admission

Music Theatre, School of Music



The Zephyr Wind Quintet comprises NZSO principal wind players; Bridget Douglas, Robert Orr, Rachel Vernon, Robert Weeks and former NZSO principal horn Ed Allen. This special lunchtime concert includes a commissioned work from Dr Leonie Holmes, as well as repertoire by other leading New Zealand composers Anthony Ritchie and Gareth Farr.

Popular Music Showcase

Thursday 11 August, 7pm

Free admission

Studio One, Kenneth Myers Centre

This concert is the major student event on the School of Music's popular music calendar and will showcase current students performing their original works. Proudly supported by MusicWorks, KOG Studio, Roundhead Studios and BFM.

Tami Neilson in Collaboration

Thursday 22 September, 7.30pm

Free admission

Studio One, Kenneth Myers Centre

Popular Music guest mentor Tami Neilson is a former winner of the APRA Silver Scroll and "Best Female Artist" at the National Country Music Awards. This concert marks the culmination of the Tami Neilson collaborative mentorship project with popular music students.

Water's Journey | Auckland Chamber Choir

Saturday 15 October, 7.30pm

Tickets \$15/\$20

Music Theatre, School of Music

A choral presentation by the Auckland Chamber Choir of the role water plays in the transformation of our lives. Featured repertoire comes from Finland, the Middle East and New Zealand.

Sundays[®] 5

**Abigail Sperling | DMA Recital
Flute; Bold New Worlds**

Sunday 3 April, 5pm

Free admission

Music Theatre, School of Music

An evening showcasing the richness and versatility of the flute, featuring Mozart's iconic *Flute Concerto in D Major* and a world premiere of a work by New Zealand composer Michael Norris.

**Karlheinz Company
Turtle Time | from Body
to Schwitters**

Sunday 15 May, 5pm

Tickets \$15/\$20

Music Theatre, School of Music

The Karlheinz Company is the School's flagship contemporary music ensemble, well known for presenting strong programmes of New Zealand and international repertoire.

**Maria Mo | DMA Recital
Impressions**

Sunday 22 May, 5pm

Free admission

Music Theatre, School of Music

Claude Debussy *Suite bergamasque* (1905)

Leoš Janáček *In the Mists* (1912)

Maurice Ravel *La valse, poème chorégraphique pour orchestre* (1920)

Alberto Ginastera *Piano Sonata No. 1, Op. 22* (1952)

**Kufferath | Almonte |
Grodd | Salzmann**

Sunday 29 May, 5pm

Tickets \$15/\$20

Music Theatre, School of Music

Uwe Grodd - flute, Elisabeth Kufferath - violin
Edith Salzmann - cello, Caroline Almonte - piano

Wolfgang Amadeus Mozart
Symphony No. 40 in G Minor, K. 550 (arr. J.N. Hummel for
flute, violin, cello and piano)

Ludwig van Beethoven
Symphony No. 3 in Eb major 'Eroica', Op. 55 (arr. J.N. Hummel
for flute, violin, cello and piano)

Collegium Musicum

Sunday 24 July, 5pm

Free admission

Music Theatre, School of Music

School of Music early music students perform a concert of work prepared over the year.

Nicholas Isherwood | The Electric Voice

Sunday 7 August, 5pm

Tickets \$15/\$20

Studio One, Kenneth Myers Centre

Nicholas Isherwood is one the world's leading singers of contemporary vocal music. Here he performs *The Electric Voice*; a concert comprising New Zealand and international repertoire, including a premiere from Dr Eve de Castro-Robinson, in the newly-completed large geodesic SoundDome.

Atchison | Johnsson | Fuller Sweet Chance

Sunday 14 August, 5pm

Tickets \$15/\$20

Music Theatre, School of Music

Morag Atchison and Catrin Johnsson – voice
Rachel Fuller – piano

Songs and duets that celebrate the beauty of nature by well-loved composers including John Ireland, Michael Head, Douglas Lilburn, Johannes Brahms, and Felix Mendelssohn.

Ensembles in Concert

Sunday 28 August, 5pm

Free admission

Music Theatre, School of Music

School of Music classical performance flute and cello students perform a concert of work prepared over the year. The concert will feature the Magic Flutes NZ and University Cello ensemble.

Jason Bae | Piano in Recital

Sunday 18 September, 5pm

Tickets \$15/\$20

Music Theatre, School of Music

Well known throughout New Zealand for his recital and concerto performances, School of Music alumnus Jason Bae returns to our shores to give a roaring piano recital.

School of Music Presents

OCTOBER '16

PRIZE CONCERTS

Anna Nathan Early Music Prize

Sunday 2 October, 5pm

Free admission

Music Theatre, School of Music

This inaugural prize concert will showcase students performing early music works as they compete for prizes sponsored by Anna Nathan.

Graham Allen Musical Theatre Prize

Saturday 8 October, 7.30pm

Tickets \$15/\$20

Music Theatre, School of Music

A gala evening showcasing voice students performing their favourite songs from musical theatre repertoire. The students compete for the Graham Allen Musical Theatre prizes, which support and encourage vocal students with an interest in musical theatre.

Llewelyn Jones Piano Composition Prize

Friday 14 October, 4pm

Free admission

Music Theatre, School of Music

The Llewelyn Jones Piano Composition Prize is an annual event established to foster the composition and performance of new music for the piano. Students compete for prize money awarded by the Llewelyn Jones Scholarship.

Douglas Lilburn Trust Composition Prize

Friday 21 October, 7.30pm

Free admission

Music Theatre, School of Music

The annual Douglas Lilburn Trust Composition Prize Concert is the major event on the School of Music's composition and sonic arts calendar. Prizes from the Lilburn Trust are awarded by an adjudication panel to the top student composers and performers.

Auckland Chamber Music Society Prize

Sunday 23 October, 3pm

Free admission

Music Theatre, School of Music

This concert follows a week of intensive examinations where student chamber groups are selected to compete for the annual Auckland Chamber Music Society Prize. Presented in association with Chamber Music New Zealand.



Chamber Music
New Zealand

Three finalists & an Orchestra

Graduation Gala Concerto Competition 2016

.....
THURSDAY 12 MAY, 7.30PM

FREE ADMISSION

AUCKLAND TOWN HALL

www.creative.auckland.ac.nz/gradgala

Patrons are strongly advised to arrive early in order to be assured of admission.
.....

The University of Auckland presents this popular annual event which marks the culmination of the University's Autumn Graduation Week.

We celebrate with a concert featuring three extraordinary performers from the School of Music. Each finalist will perform a concerto with the University of Auckland Symphony Orchestra, conducted by Professor Uwe Grodd.

Opening the concert will be the School of Music massed choir and the University of Auckland Chamber Choir, conducted by Associate Professor Karen Grylls.



WALLACE
INTERNATIONAL
PIANO FESTIVAL

Wallace International Piano Festival

An exciting four-day event for lovers of piano music

RECITALS

Thursday 7 July, 7.30pm	Boris Giltburg (Israel)
Friday 8 July, 7.30pm	Read Gainsford (USA/New Zealand)
Sunday 10 July, 5pm	Delvan Lin (Winner, Wallace National Piano Competition 2015)

MASTERCLASSES AND WORKSHOPS

Friday 8 – Sunday 10 July, 10am and 1.30pm
Boris Giltburg (Israel) | Albert Tiu (Singapore) | Read Gainsford (USA/New Zealand)

WALLACE INTERNATIONAL JUNIOR PIANO COMPETITION

Thursday 7 July, 9.30am	Preliminaries
Saturday 9 July, 7pm	Final

The Wallace National Junior Piano Competition gives New Zealand pianists under the age of 18 the opportunity to compete for prizes totalling over \$4000.

1st Prize \$2,000

2nd Prize \$1,000

3rd Prize \$500

Other finalists \$200

Adjudicators: Albert Tiu and Read Gainsford

Masterclasses and Workshops: \$10-\$15
Recitals and Competition Final: \$20-\$50
Festival Pass for entry to all events: \$150
Venue: Music Theatre, School of Music.
Patron: Sir James Wallace.
Entries close 1 April 2016

Find out more www.lect.co.nz
In association with the
Lewis Eady Charitable Trust.

OPERA SCENES

Friday 16 and Saturday 17 September, 7.30pm
\$15/\$20 | Music Theatre, School of Music

Travel back in time with us to the 1950s as the exciting young singers of the University of Auckland voice class present a series of opera scenes set in a classic American diner. Come and hear operatic favourites by composers ranging from Mozart to Prokofiev, heard anew in this fun and unusual setting.

"...it's a story about relationships, there's nothing uniquely 1790 about it."

Director Dr Gregory Camp on Mozart's *Così fan tutte*

www.creative.auckland.ac.nz/OperaScenes

—  —

Orchestra, Massed Choir &
Big Band Concert

CLOUDBURST

—  —

Overture
University of Auckland Big Band
Director: Roger Manins

Eric Whitacre | *Cloudburst* (1992)
University of Auckland Massed Choir including the Auckland Chamber Choir
Conductor: Karen Grylls

Claude Debussy | *Prélude à l'après-midi d'un faune* (1894)
Ludwig van Beethoven | *Symphony No. 8 in F Major, Op. 93* (1812)

University of Auckland Symphony Orchestra
Conductor: Uwe Grodd

WEDNESDAY 28 SEPTEMBER, 8PM

Free Admission
Auckland Town Hall

In association with APO INSPIRE



THE
PETTMAN NATIONAL
JUNIOR ACADEMY
of Music

PETTMAN NATIONAL JUNIOR ACADEMY OF MUSIC (PNJA)

The Pettman National Junior Academy of Music (PNJA) is an important adjunct to the School of Music. This unique programme offers young New Zealand musicians the chance to work with university teachers, gain experience in both solo and ensemble performance and improve their musicianship and choir skills. Through the generous sponsorship of Professor Barrie and Mrs Maureen Pettman, the Academy offers 40 scholarship places annually, each of which is valued at \$4000.

In 2016, PNJA presents their first competition for young string players *PNJA Concerto Auckland*, the annual PNJA Students Concert Series and an ongoing masterclass and recital series featuring guest artists hosted at the School of Music and other venues in Auckland.

PNJA Concerto Auckland Young String Players Competition

Friday 4 – Sunday 6 March

Music Theatre, School of Music

PNJA Students Concert Series

Wednesday 20 April | Wednesday 1 June | Friday 23 September | Tuesday 6 December

Free admission

Music Theatre, School of Music

Concerts at the Auckland Art Gallery

Saturday 19 March Solo recital | Benedict Lim, violin

Saturday 23 April Chamber Music | Clio Gould, violin | Jonathan Morton, violin

Saturday 4 June Chamber Music | Elisabeth Kufferath, violin

Saturday 11 June Solo recital | Ekaterina Derzhavina, piano

Saturday 1 October Chamber Music | Elisabeth Kufferath, violin

Pettman Open Chamber Music Masterclasses and Recitals

4 – 13 March Ramon Jaffé, cello (Music Academy Dresden, Germany)

13 – 23 April Clio Gould, violin (Head of strings - Royal Academy of Music – London)
Jonathan Morton, violin (Artistic Director – The Scottish Ensemble)
Edith Salzmann, cello (University of Auckland)

28 May – 8 June Elisabeth Kufferath, violin (Music Academy Hanover, Germany)

8 – 16 June Ekaterina Dershavina, piano (Tchaikovsky Conservatory, Moscow)

28 August – 4 September Ole Akahoshi, cello (Yale School of Music, New York)

23 September – 2 October Elisabeth Kufferath, violin (Music Academy Hanover, Germany)

5 – 8 December Anthony Marwood, violin (London)

For more information, please visit: www.pnja.co.nz

Join our staff, guests and students as they explore musical performance in a masterclass or workshop setting. These events are free and all are welcome.

MASTERCLASS ~~WORKSHOPS~~

Throughout the academic year, the School of Music holds masterclasses with a range of visiting artists. In 2016 the School is pleased to host Jamie Oehlers (jazz saxophone; March), Christopher Hinterhuber (piano; March), members of the Enso String Quartet (chamber music; May), Nicholas Isherwood (voice; August) and others yet to be announced.

For a listing of current masterclasses and workshops visit www.creative.auckland.ac.nz/events

Other Student Performances

School of Music students regularly perform in the popular Lunchtime Concert Series, performance assessments and postgraduate music recitals. These events are free and all are welcome.

For a listing of current performances visit www.creative.auckland.ac.nz/events



CLASSROOM SESSIONS

Come and join these inspiring workshop sessions tailored specifically for Secondary School students, led by staff and guests of the School of Music.

Songwriter Workshops

Tuesday 7 and Wednesday 8 June, 10am-7pm

Free admission. Registration required.

Studio One, Kenneth Myers Centre

E: creative@auckland.ac.nz

Secondary Schools are invited to register for one of two full day workshops on composing songs, vocal performance techniques, instrumental arrangement and accompaniment. Both days will end with an early evening concert showcasing the participants' original songs to family and friends.

Jazz Combo Series

Saturday 13, 20, 27 August, 1-4pm

\$100. Registration required.

Studio One, Kenneth Myers Centre

Saturday 27 August, 5-7pm

Free admission

Studio One, Kenneth Myers Centre

E: creative@auckland.ac.nz

Three consecutive weeks of intensive ensemble training for keen jazz musicians instructed by School of Music teachers.

A free public performance concert will follow the conclusion of the three week ensemble workshop.

The School of Music also offers "sit-in" classroom sessions for secondary school groups on request. These sessions are followed by a campus tour and Q+A session with School of Music staff. If you are an educator and would like to register for a sit-in session please contact info-creative@auckland.ac.nz.

.....

VENUES

School of Music	6 Symonds Street, Auckland
Kenneth Myers Centre	74 Shortland Street, Auckland
Auckland Town Hall	303 Queen Street, Auckland

.....

BOOKING AND REGISTRATION

INFORMATION For paid events, it is strongly recommended that you prepay through Eventbrite, as there are limited door sales which are EFTPOS only (NO cash facilities). All booking and registration details are available at www.creative.auckland.ac.nz/events

.....

PARKING is available in the basement of the Owen G. Glenn Building (Business School). Charges apply. Vehicle access is from Grafton Road at a light-controlled intersection.

.....

FIND OUT MORE

The Faculty of Creative Arts and Industries also comprises the School of Architecture and Planning, Elam School of Fine Arts, and the Dance Studies Programme. For the latest details on School of Music and other faculty events, or to join our mailing list, please visit www.creative.auckland.ac.nz/events

CONTACT

0800 61 62 63 | creative@auckland.ac.nz

The School of Music would like to thank the following for their support:



School of Music

Information is correct at time of print but is subject to change. For further details visit:
www.creative.auckland.ac.nz/events