

# UoA-WiFi wireless setup

For Windows 7, using Wireless Zero and Internet Explorer

**Note:** This guide is for use with Windows 7 and its in-built Wireless Zero configuration service only. Other wireless programs will likely work in a similar fashion.

## 1. Connecting to UoA-WiFi

First, locate the wireless connection icon. It should be on the System Tray at the bottom right, and might look something like this:



If this icon isn't in the system tray, but you do have a wireless card, then your wireless card may be turned off. Find the switch for it on your laptop and switch it to the ON position. Click on the icon once to bring up the following menu, then click on the connection called '**UoA-WiFi**':



You will next be prompted to log in. Type in your UoA **NetID** and **Password** in the boxes provided, then Click '**OK**':



## 2. Accepting the Security Certificate

If you are logging in on UoA-WiFi for the first time, you will then receive a Windows security message like the one below. Click on '**Details**':

If you would like your laptop to connect automatically when this network is in range, then tick the box labeled '**Connect Automatically**'.



Next, click the '**Connect**' button:

# UoA-WiFi wireless setup

For Windows 7, using Wireless Zero and Internet Explorer

Next, carefully read the pop-up message below and confirm that the Radius Server is **uoa-wifi.auckland.ac.nz**

Next, click '**Connect**':



You will only need to do this the first time that you connect.

## 3. Browsing the Internet

You can now open your internet browser of choice and access both University and non-University websites.



To set up full-speed browsing for non-University sites, **set up NetLogin** as follows.

### i. Download NetLogin

First, you will need to download the NetLogin client. This programme is free and is available from the following link:

<http://ec.auckland.ac.nz/software.htm>

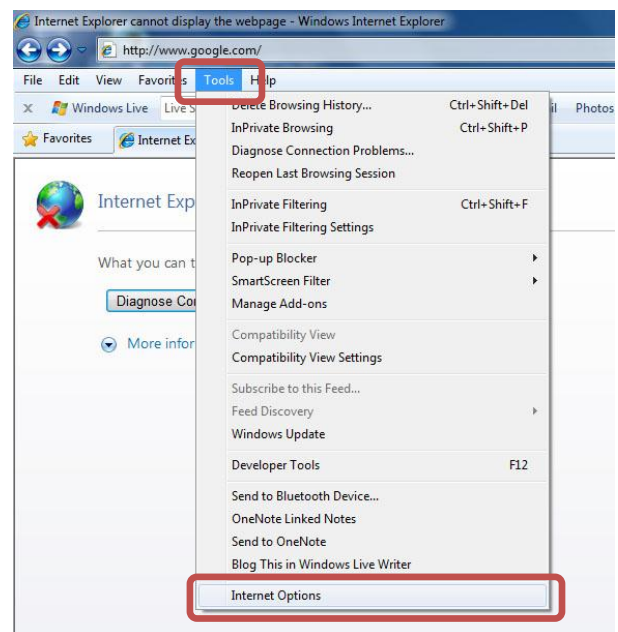
Depending on your laptop's specifications, download the 32 or 64 bit application for version '**Windows 3.0.4**':

OS	Version
	<a href="#">Windows 3.0.4 - 32 bit application</a>
	<a href="#">Windows 3.0.4 - 64 bit application</a>

You will need to save this application to a location of your choosing.

### ii. Set Up Proxy Address

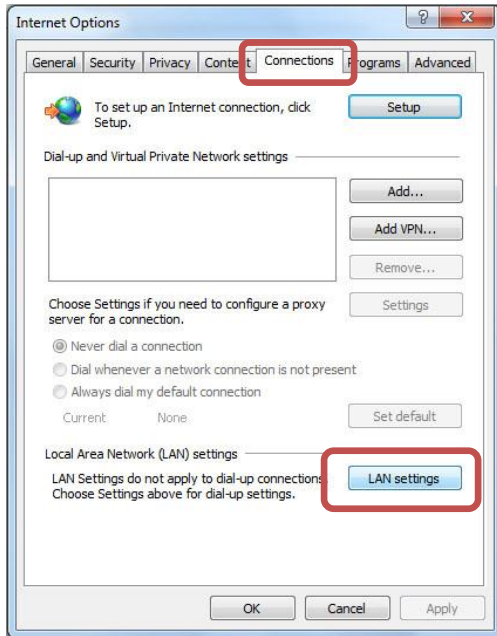
NetLogin will not work unless you enable some settings in your internet browser. To do this, open Internet Explorer, click on the '**Tools**' menu at the top, then select '**Internet Options**':



In the 'Internet Options' window, Click on the '**Connections**' tab, then click on '**LAN settings**':

# UoA-WiFi wireless setup

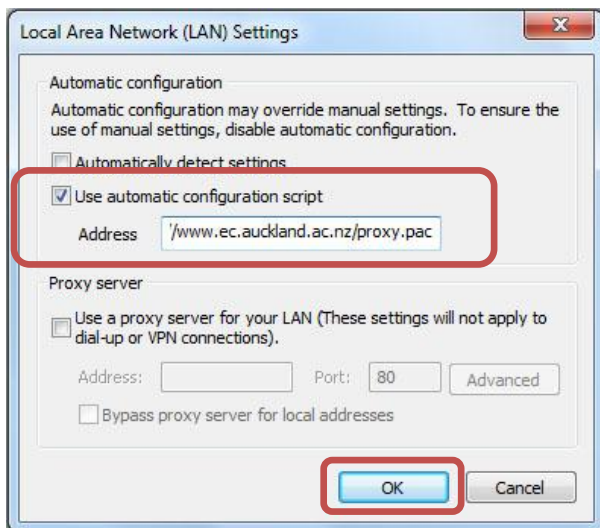
For Windows 7, using Wireless Zero and Internet Explorer



In the LAN Settings window, tick the option that says '**Use automatic configuration script**'. In the address field, type the following address:

<http://www.ec.auckland.ac.nz/proxy.pac>

The window should now look like this:



Next, when prompted, click '**OK**' on each of the windows that you have already opened.

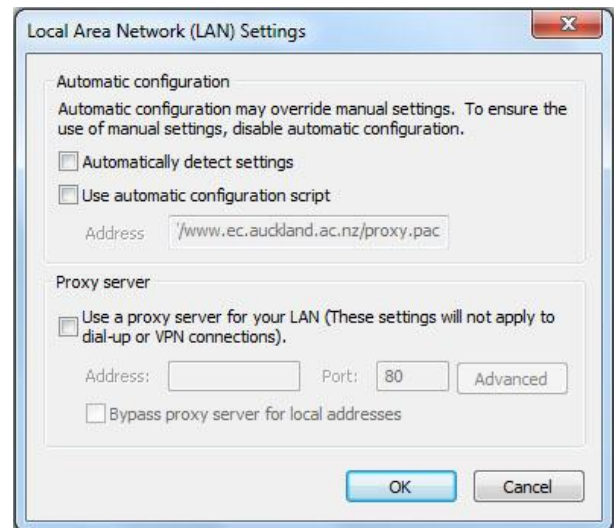
### iii. Run NetLogin

To use NetLogin and browse UoA-WiFi at full speed, ensure that you are connected

to the UoA-WiFi wireless network. Next, double-click on the NetLogin icon and sign in with your UoA NetID and password.

**Note 1:** If you want to use the default wireless again, or the proxy settings are causing issues with other Wireless networks that you use, open your browser, then navigate through: Tools>Internet Options>Connections>LAN Settings.

In the '(LAN)' window, un-tick '**Use automatic configuration script**'. The window should look like this:



From now on, whenever you tick this box, you will be able to use NetLogin, and whenever you un-tick it, you will use the default wireless service.

**Note 2:** These instructions only describe how to set up the Proxy and get full-speed browsing on Internet Explorer. If you wish to use NetLogin with a different browser, you will also need to set up the Proxy address in that browser.