

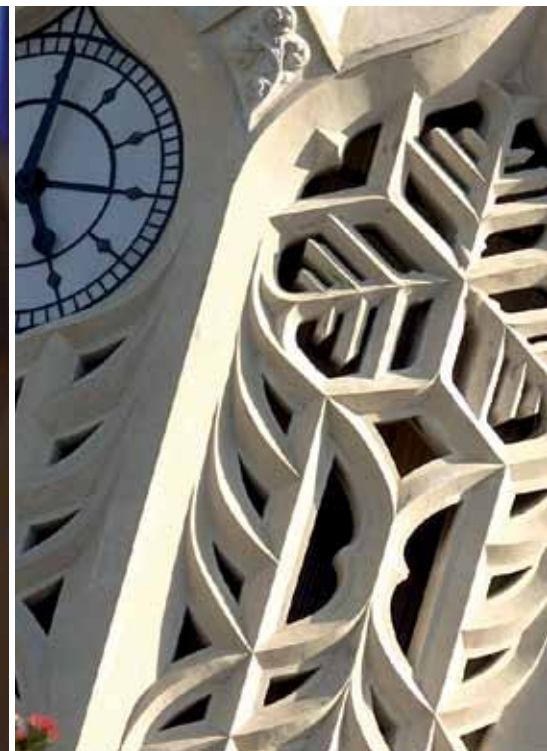


THE UNIVERSITY  
OF AUCKLAND

NEW ZEALAND

Te Whare Wānanga o Tāmaki Makaurau

# The University of Auckland 2011-12 Profile





# The University of Auckland Profile

The University of Auckland is New Zealand's leading and largest university. It is the only one included in the Times Higher Education top 200 and it is the highest ranked New Zealand university in the QS World University Rankings and Shanghai Jiao Tong Academic Ranking of World Universities.

Based in the heart of New Zealand's largest and most diverse city, The University of Auckland has the most comprehensive range of courses in the country with teaching and research conducted over eight faculties and two large-scale research institutes. It is New Zealand's pre-eminent research-led institution and has key linkages with many of the world's top research intensive universities.

[www.auckland.ac.nz/uoa/new-zealands-leading-university](http://www.auckland.ac.nz/uoa/new-zealands-leading-university)

## History of the University

Founded by Act of Parliament in 1883 as a College of the University of New Zealand, The University of Auckland became fully independent in 1962. From the beginning it has admitted both men and women as students. At first the College dedicated itself to providing opportunities for higher education in the arts, science and music, and vocational education in law, teaching and commerce. Over time its curriculum has expanded to include architecture, fine arts, engineering, planning, medical and health sciences and theology.

The University was established in the centre of the small colonial city of Auckland and has grown to become a major feature of the twenty-first century city, with a number of specialised satellite campuses. The iconic ClockTower, built in 1926, is a city landmark and the more recent Owen G Glenn

Building housing the Business School is fast becoming one of the most commented on buildings of its time.

In 1883 the College enrolled 95 students; now it enrolls over 40,000 each year. The original staff of four professors and a registrar has swelled to 2,750 academic and 2,650 general staff.

The University of Auckland is an international institution with staff appointed from many countries and students attending from round the world. Both staff and students participate in international exchanges and attend international conferences. These international linkages are vital to a teaching and research University which strives to be academically excellent and to provide its staff and students with the best possible educational and career opportunities.





Top teachers: Rachel Fewster, Paul Denny



Dame Anne Salmond

## Students

<b>Total student numbers</b>	<b>41,000</b>
Domestic	36,300
International	4,700
Undergraduate	32,000
Postgraduate*	10,700
Masters	2,600
PhD	2,100
Other	6,000

\* Includes multiple enrolments for one student.

### Spark winner

In 2003 Engineering student Fady Mishriki (BE, BCom 2007) entered the University's inaugural Spark Entrepreneurial Challenge sowing the seeds for the wireless power company PowerbyProxi. "Spark provided us

with world-class training, education and mentorship from experienced business people," says Fady, now the company's CEO.

PowerbyProxi had its first major break when it secured John Deere, the world's largest maker of farm and forestry equipment, as a partner and customer. Now it is leading a revolution to deliver unplugged power to hostile industrial environments where power cables, physical connectors and mechanical slip rings are problematic, expensive and unreliable. The company has offices in Auckland and Cincinnati, it has backing from the investment group Movac and its customers include several Fortune 100 companies. [www.powerbyproxi.com](http://www.powerbyproxi.com)

### Sporting career

New Zealand's top-ranked women's high-jumper, Elizabeth Lamb is combining her international sporting career with study for a Bachelor of Commerce and Science conjoint degree at The University of Auckland. Last year the 19-year-old athlete came 6th in the Women's 19 and under high jump at the Delhi Commonwealth Games and she won in her age group and the senior women's competition at the 2010 Oceania Champs.

In 2011 Elizabeth combines third-year University study with competitions in Europe including the UK Under 23 Championships.

## Staff

<b>Total staff numbers</b>	<b>5,400</b>
Academic	2,750
General	2,650

### Staff fellowships and awards:

National Tertiary Teaching Excellence Awards - 11  
 Fellows of the Royal Society - 3  
 Fellows of the Royal Society of NZ - 67  
 Rutherford Medal holders - 5  
 Fields Medal holders - 1

### Top teachers

Auckland teachers or teaching teams have won National Tertiary Teaching

Excellence Awards in every year since their inception in 2002. The 2009 winners were statistics senior lecturer Rachel Fewster and computer scientist Paul Denny. In 2010, media production specialist Margaret Henley won an award.

### Bioengineer

Distinguished Professor of Engineering Science, Peter Hunter is a fellow of the Royal Society of London and the Royal Society of New Zealand as well as a member of the American Institute for Medical and Biological Engineering. He is the founder and director of the Auckland Bioengineering Institute, has pioneered computer modelling of the heart and plays a leading role in the

Human Physiome Project, which is building sophisticated computer models of all systems and organs of the human body.

### Anthropologist

Distinguished Professor of Māori Studies and Anthropology, Dame Anne Salmond is among a small group of New Zealanders who are members of the American National Academy of Sciences for excellence in scientific research. She is also a fellow of the British Academy for Humanities and Social Sciences and of the Royal Society of New Zealand. Dame Anne is New Zealand's foremost anthropologist, internationally recognised for her eminent scholarship on Māori and Pacific societies and voyaging in the Pacific.



Mark Sagar



Helen Clark

### Student profile

Chinese PhD candidate Xilai Li, director of the Grassland Institute at China's Qinghai University on the Tibetan Plateau, has been studying for his PhD at The University of Auckland's School of Environment since July 2008.

Returning regularly to work at research sites in his homeland, Xilai is looking at the spatial dynamics of *Kobresia* meadow plants to determine the ecological role they can play in the maintenance of alpine meadows on the Qinghai-Tibetan Plateau. Specific course papers he has taken at Auckland include Analysis and Modelling of Environmental Processes, and GIS and Spatial analysis of surface models. He says he's loved being at Auckland and has improved his writing and publishing skills.



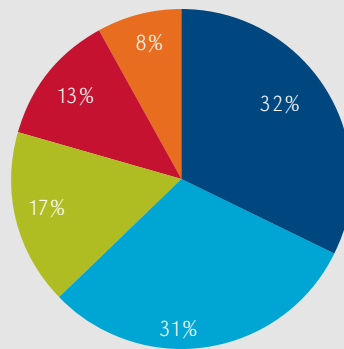
### Alumni

<b>Total alumni</b>	<b>106,000</b>
<b>Overseas alumni</b>	<b>13,000</b>
<b>New Zealand alumni</b>	<b>93,000</b>

Among our University alumni are: New Zealand's Governor General (2006-2011), His Excellency the Honorable Sir Anand Satyanand ( LLB 1971 and a LLD (Honorary) 2006 ); Rt Hon. Helen Clark (BA 1971, MA

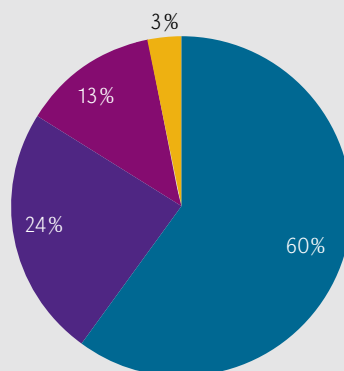
1974, LLD (Honorary) 2010) Prime Minister of New Zealand 1999 – 2008, now based in New York as Administrator of the United Nations Development Programme; Mark Weldon (BA/BCOM 1991, MCOM 1993) who has been CEO of the New Zealand stock exchange since June 2002; and double Oscar winner Mark Sagar (BSc, PhD Mechanical Engineering 1996).

### Budget



#### Revenue

- Government tuition subsidy
- Domestic student fees
- International student fees
- Externally research revenue including PBRF
- Other income



#### Expenditure

- People costs
- Operating costs
- Depreciation and leases
- Surplus



Dr Julie Spicer, Dr Adam Patterson, Auckland Cancer Research Centre.



"On First Looking into Chapman's Homer"  
Michael Parekowhai

## Research

The University of Auckland is New Zealand's largest research organisation with more than 12,000 staff and postgraduate students involved in fundamental and applied research. It generates more than \$200 million in annual research revenue, more than \$30 million from overseas bodies such as the European Commission and the National Institutes of Health (US).

The New Zealand Government operates a national research evaluation system, the Performance Based Research Fund (PBRF), which is similar to the British Research Assessment Exercise but based on the evaluation of individual staff. All eight New Zealand universities and another 23 tertiary institutions participated in this evaluation in 2006.

The University of Auckland, with just 18% of the eligible staff nationally:

- Had 33% of the top-rated researchers in the whole country
- Won 27% of the funding nationally based on quality evaluation of academic staff, 33% of the funding based on research degree completions and 38% of the funding based on external research income
- Won 30% of the funding overall, thereby confirming its position as the nation's premier research institution.

Our research programmes range across all disciplines: from Education where researchers are trying to increase learning success in clusters of low-achieving primary and secondary schools to our Auckland Cancer Society Research Centre which is a

world leader in cancer drug development. We are international research leaders in inductive (wireless) power transfer, computational physiology, and fetal and child health and development. One of our researchers and teachers at Elam School of Fine Arts, Associate Professor Michael Parekowhai represented New Zealand at the 2011 Venice Biennale.

### Centres of Research Excellence

As well as having more than 50 research units, centres and institutes at departmental, faculty and University level, we host four of New Zealand's eight National Centres of Research Excellence established by the Government to drive innovative, international research. These are:

**Maurice Wilkins Centre for Molecular Biodiscovery**, which brings together over 200 researchers in multi-disciplinary teams working in drug discovery and development aimed at serious disease. [cmb1.auckland.ac.nz](http://cmb1.auckland.ac.nz)

**Ngā Pae o te Māramatanga**, which carries out research for the development and advancement of New Zealand's indigenous Māori, focusing on their needs and aspirations in education, health and science. [www.maramatanga.co.nz/](http://www.maramatanga.co.nz/)

**National Research Centre for Growth and Development**, which focuses its biomedical research and experimental and clinical physiology programmes on the early stages of life. [www.nrcgd.org.nz/](http://www.nrcgd.org.nz/)

**New Zealand Institute of Mathematics and its Applications (NZIMA)**, which promotes mathematical research in New Zealand. [www.nzima.org](http://www.nzima.org)

### Commercialising research

#### UniServices

Auckland UniServices Limited is our commercial research and knowledge transfer company. It is the largest company of its kind in Australasia bringing income and new employment opportunities into the University and New Zealand from 300 licences for intellectual property, and from contract research and contract education.

UniServices has launched more than 30 New Zealand businesses from University research and currently has more than 2,000 projects in 36 countries around the globe. These range from geothermal prospecting in Iceland and demonstrating advanced educational tools in New York schools, to designing cleaner manufacturing systems in Japan. [www.uniservices.co.nz](http://www.uniservices.co.nz)

#### Entrepreneurial ecosystem

The University's Business School has established an entrepreneurial ecosystem to foster young entrepreneurs to create start-up companies. It features two key student-led competitions: Spark – an annual entrepreneurial challenge with categories ranging from new ideas through to fully developed products and business plans, and Chiasma – another initiative which encourages ideas, networking, careers and business in biotechnology.

[www.spark.auckland.ac.nz](http://www.spark.auckland.ac.nz)  
[www.chiasma.auckland.ac.nz](http://www.chiasma.auckland.ac.nz)



The Fale Pasifika

## Faculties and academic units

### Faculty of Arts

- Anthropology
- Art History
- Asian Studies
- Classics and Ancient History
- Development Studies
- English
- European Languages and Literatures
- Film, Television and Media Studies
- History
- Māori Studies
- Pacific Studies
- Philosophy
- Political Studies
- Sociology
- Theology

[www.arts.auckland.ac.nz/uoa/](http://www.arts.auckland.ac.nz/uoa/)

### Faculty of Business and Economics

- Accounting and Finance
- Commercial Law
- Economics
- Graduate School of Enterprise
- Information Systems and Operations Management
- Management and International Business
- Marketing
- Property

[www.business.auckland.ac.nz/](http://www.business.auckland.ac.nz/)

### Subject rankings

In 2010 Auckland was ranked in the top 50 universities in the Times Higher Education rankings in two subject areas: Clinical, Pre-Clinical and Health (47) and Arts and Humanities (49). In the QS rankings Auckland's Arts and Humanities subjects are ranked 23rd for Modern Languages, 30th for Geography and Area Studies, 31st for Linguistics, 33rd for History, 42nd for English Language and Literature and 43rd for Philosophy. In Life Sciences Auckland is 27th in Psychology and 39th in both Medicine and Biological Sciences. In Natural Sciences it ranks 30th for Mathematics, 34= for Environmental Science, 43rd for Chemistry and in the 51-100 range for Physics and Astronomy, Metallurgy and Materials and Earth and Marine Sciences. Auckland ranks 40th for Computer Science and Information Systems and 55th for Engineering and Technology.

### Faculty of Creative Arts and Industries

- Architecture and Planning
- Dance Studies
- Fine Arts (Elam)
- Music
- NZ Art Research and Discovery

[www.creative.auckland.ac.nz/uoa/](http://www.creative.auckland.ac.nz/uoa/)

### Faculty of Education

- Arts, Languages and Literacies
- Counselling, Human Services and Social Work
- Critical Studies in Education
- Science, Mathematics and Technology
- Te Puna Wānanga
- Teaching, Learning and Development
- Teacher Education Practice

[www.education.auckland.ac.nz/uoa/](http://www.education.auckland.ac.nz/uoa/)

### Faculty of Engineering

- Chemical and Materials
- Civil and Environmental
- Electrical and Computer
- Engineering Science
- Institute of Earth Science and Engineering
- Mechanical

[www.engineering.auckland.ac.nz/uoa/](http://www.engineering.auckland.ac.nz/uoa/)

### Faculty of Law

[www.law.auckland.ac.nz/uoa/](http://www.law.auckland.ac.nz/uoa/)

### Faculty of Medical and Health Sciences

- Medical Sciences
- Medicine
- National Institute for Health Innovation
- Nursing
- Pharmacy
- Population Health

[www.fmhs.auckland.ac.nz/faculty/](http://www.fmhs.auckland.ac.nz/faculty/)

### Faculty of Science

- Biological Sciences
- Chemistry
- Computer Science
- Environment
- Leigh Marine
- Mathematics
- Optometry
- Physics
- Psychology
- Sport and Exercise Science
- Statistics

[www.science.auckland.ac.nz/uoa/](http://www.science.auckland.ac.nz/uoa/)

### Large Scale Research Institutes

- Auckland Bioengineering Institute
- Liggins Institute

[www.abi.auckland.ac.nz/uoa/](http://www.abi.auckland.ac.nz/uoa/)

[www.liggins.auckland.ac.nz/uoa/](http://www.liggins.auckland.ac.nz/uoa/)





Dr Brett Cowan with the MRI scanner



The Gus Fisher Art Gallery

## Campuses

**City** - this covers 16 hectares in the heart of Auckland city and is home to the University's administration and the faculties of Arts, Engineering, Science, Law, Business and Creative Arts and Industries.

**Grafton** - houses the Faculty of Medical and Health Sciences and is adjacent to Auckland Hospital, five minutes drive from the city.

**Tāmaki Innovation Campus** - 20 minutes drive from the city, is home to a variety of units including the School of Population Health, Sport and Exercise Science, the Centre for Advanced Composite Materials and the University clinics.

**Epsom** - is the main Faculty of Education campus, 10 minutes drive from the city, and offers programmes in teacher education and social services.

**Tai Tokerau** - in Whangarei, three hours north of Auckland, offers courses run by the Faculty of Education.

[www.auckland.ac.nz/uoa/home/about/the-university/how-university-works/campuses-locations-transport/](http://www.auckland.ac.nz/uoa/home/about/the-university/how-university-works/campuses-locations-transport/)

## Facilities

### Research facilities

Among leading University research facilities that benefit staff, students and the public is the world class Centre for Advance MRI (Magnetic Resonance Imaging) at Grafton which has the most advanced 3T MRI research scanner in the world. The National Conservation Laboratory for Wet Organic Archaeological Materials based in the Department of Anthropology is the only facility of its type in the South Pacific and the new Brain Recovery Clinic at the Tāmaki Innovation Campus will link people in the Auckland community with world-leading scientists and clinicians from the University's Centre for Brain Research.

### Library

The University's General Library is the largest in New Zealand and ranks among the top five university libraries in Australia. Located on the five campuses, it includes 13 subject-specific libraries and four Information Commons facilities and has 4,600 study spaces, with 1,100 computer workstations. Each year the University invests over \$20 million in the library's

collections giving students immediate access to more than 800 databases, 87,000 electronic journals, 340,000 electronic books, and print, multimedia and micro text collections totalling over 2.2 million items, as well as unique manuscript and archive collections.

### Art and recreation

On the City Campus there is a large Recreation Centre, a 448-seat theatre and 150-seat music theatre, and two art galleries: The Gus Fisher and George Fraser. At Epsom campus there is a fitness centre and gymnasium, tennis courts and a swimming pool.

The University provides counselling, medical and dental services for students and there are three childcare centres on the City Campus, two each at Epsom and Grafton and one at Tāmaki

### International engagement

Auckland has formal agreements with 170 universities in 39 countries and attracts high-quality undergraduate and

postgraduate international students to study here from over 100 countries.

The University is the only New Zealand member of Universitas 21, the Association of Pacific Rim Universities and the Worldwide Universities Network - three international consortia which enable leading research universities from around the world to collaborate in addressing issues of global significance.

The University has over 100 Memoranda of Understanding with research institutions from Australia, Canada, China, Germany, Japan, Sweden, the United Kingdom and the United States. We have recently established strong collaborations with leading universities in China - including initiatives such as the New Zealand Centre, established at Peking University as a venue for NZ-China policy development, and a Confucius Institute (one of 300 worldwide) based at Auckland and run in partnership with Fudan University.



**THE UNIVERSITY  
OF AUCKLAND**

**NEW ZEALAND**

Te Whare Wānanga o Tāmaki Makaurau

**The University of Auckland**

Private Bag 92019

Auckland 1142, New Zealand

Phone: +64 9 373 7599

Email: [contactus@auckland.ac.nz](mailto:contactus@auckland.ac.nz)

Web: [www.auckland.ac.nz](http://www.auckland.ac.nz)

**External Relations**

Phone: +64 9 373 7599 ext 88113

Email: [alumni@auckland.ac.nz](mailto:alumni@auckland.ac.nz)

Email: [advancement@auckland.ac.nz](mailto:advancement@auckland.ac.nz)

Web: [www.alumni.auckland.ac.nz](http://www.alumni.auckland.ac.nz)

Web: [www.advancement.auckland.ac.nz](http://www.advancement.auckland.ac.nz)