

STUDENT LEVY

2021 EXPENDITURES

The Student Levy, or Compulsory Student Services Fee, is the fee paid by an enrolled student for student support services provided by the University.

The fee for 2021 was \$8.02 per point (on average that works out to be \$962.20 per year for a typical undergraduate taking eight papers in a year).

The fee is collected at the same time that tuition fees are billed. For first year students whose fees are being covered under the Fees-free government policy, your Student Levy will also be covered by this initiative for the first year of your study.

Each year, the University collects approximately \$28m in student levies.

The Education Amendment Act (2011) directs universities on the categories of services that the student levy can be used to fund, these are explained on this page.

**Figures have been rounded to the nearest thousand.*



\$3,173,000



Health Services

This proportion of the funding covers health care (like doctors and nurses) and related welfare services including the disability service.

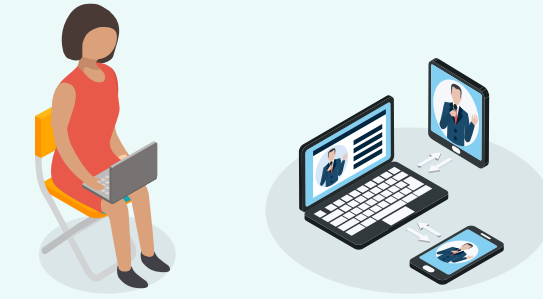
\$548,000



Childcare Services

The levy subsidises childcare for students at the University's six Early Childhood Centres.

\$567,000



Media

This proportion of funding supports the production and dissemination of information by students to students in journals, blogs, newsletters and publications such as Craccum.

\$115,000



Employment information

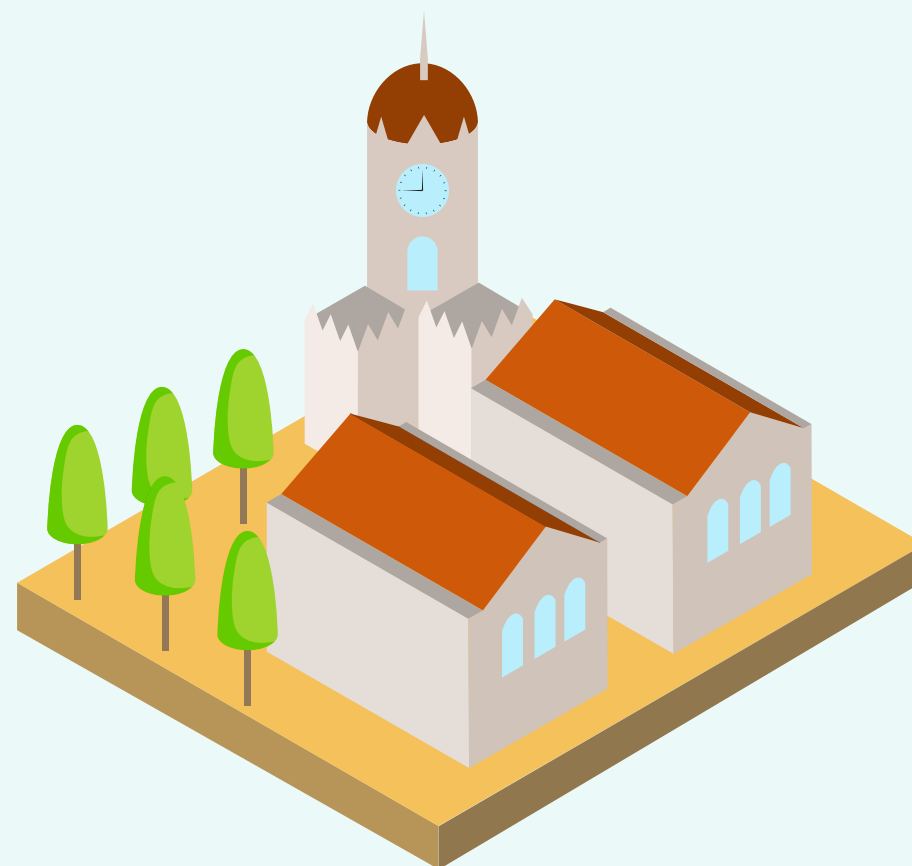
The levy funding covers the provision of information about employment opportunities during study, such as Student Job Search and events promoting in-study internships and summer placements.

\$120,000



Advocacy and legal advice

The levy allocation includes services which advocate on behalf of individual students and groups of students, and provides independent support to resolve problems. This primarily includes AUSA's Advice Hub and executives, along with designated spaces to undertake these activities.



\$4,075,000



Sport, recreation and cultural activities

The levy covers a range of activities including sporting programmes, competitions and support, celebration of co-curricular achievements such as the Blues Awards and the Distinguished Graduate Programme and events such as orientation and the UniGuide hangouts. The levy is also used to subsidise student memberships at the Recreation Centre.

\$9,200,000



Facilities & Infrastructure

Improvements funded in 2021 included updates to student spaces in Building 311, modifications to the quad area and the creation of a new student kitchen and lounge.

\$1,696,000



Career information, advice and guidance

The levy funding focuses on developing students' career literacy and building their employability skills to support student retention and successful transitions into the workplace. It also includes connecting students with employers through virtual and on-campus events and activities, so students can grow their employer knowledge and networks.

\$3,981,000



Counselling Services and pastoral care

The levy allocation includes services which provide counselling and pastoral care throughout different parts of the student experience. It includes the counselling service, Campus Care, mentoring (including Tūākana), faith and spirituality support and international student support.

\$4,374,000



Clubs and societies

The levy supports almost 270 student clubs and societies, this includes provision of direct funding to student groups, organisation of expos, and co-ordination of equipment, resources, workshops, administrative assistance, spaces, facilities and support.

\$725,000



Financial support and advice

The funding received through the levy provides hardship support, including accommodation, food and travel subsidies, along with financial advice from AUSA and the University.

CONSULTATION PROCESS

The Student Consultative Group is the consultation forum for the levy. This group is made up of student and staff representatives and is chaired by the Provost. This group makes recommendations to the Finance Committee and Council in September. Council sets fees in October.

Students can talk directly with their representative on the SCG to make their views known on the levy. To find out who is on SCG, visit the [website](#).

**based on full time study (120 points) ** Moved to a per point system in 2022, eligible students received a rebate to facilitate transition to new structure*

2022 Levy fee comparisons

NZ\$ (GST inclusive)	Student Assistance	Student Services	TOTAL – 2022	TOTAL – 2021	% change vs. 2021
Auckland		\$979.20	\$979.20	\$962.20	1.77%
AUT		\$934.07	\$934.07	\$867.92	7.62%
Canterbury		\$892.80	\$892.80	\$877.20	1.78%
Massey (Albany)		\$767.10	\$767.10	\$739.30	3.76%
Massey (Manawatu)		\$716.90	\$716.90	\$689.10	4.03%
Otago		\$906.00	\$906.00	\$879.00	3.07%
Waikato		\$844.80	\$844.80	\$792.00	6.67%
Victoria**	\$28.00	\$1017.60	\$1045.00	\$871.00	19.98%