

STUDENT LEVY

2019 EXPENDITURES

The Student Levy, or Compulsory Student Services Fee, is the fee paid by an enrolled student for student support services provided by the University.

The fee is **\$7.86** per point (on average that works out to be **\$943.20** per year for a typical undergraduate taking eight papers in a year). Both international and domestic students pay the same amount. Postgraduates are charged the same fee per point as undergraduate students.

The fee is collected at the same time that tuition fees are billed. For first year students whose fees are being covered under the Fees-free government policy, your Student Levy will also be covered by this initiative for the first year of your study.

Each year, the University collects approximately **\$24m** in student levies.

The Education Amendment Act (2011) directs universities on the categories of services that the student levy can be used to fund, these are displayed on this page.

**Figures have been rounded to the nearest thousand. Reporting is from 2019.*



\$2,836,000

Health and Counselling Services

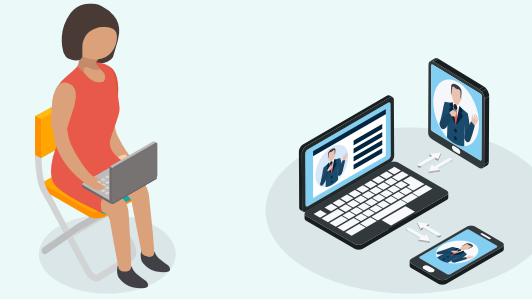
The levy helps to provide health care (like doctors and nurses) and related welfare services such as counselling and disability services.



\$105,000

Childcare Services

The levy subsidises childcare for students at the University's six Early Childhood Centres.



\$375,000

Media

The levy supports the production and dissemination of information by students to students in journals, blogs, newsletters and publications such as Craccum.



\$173,000

Employment information

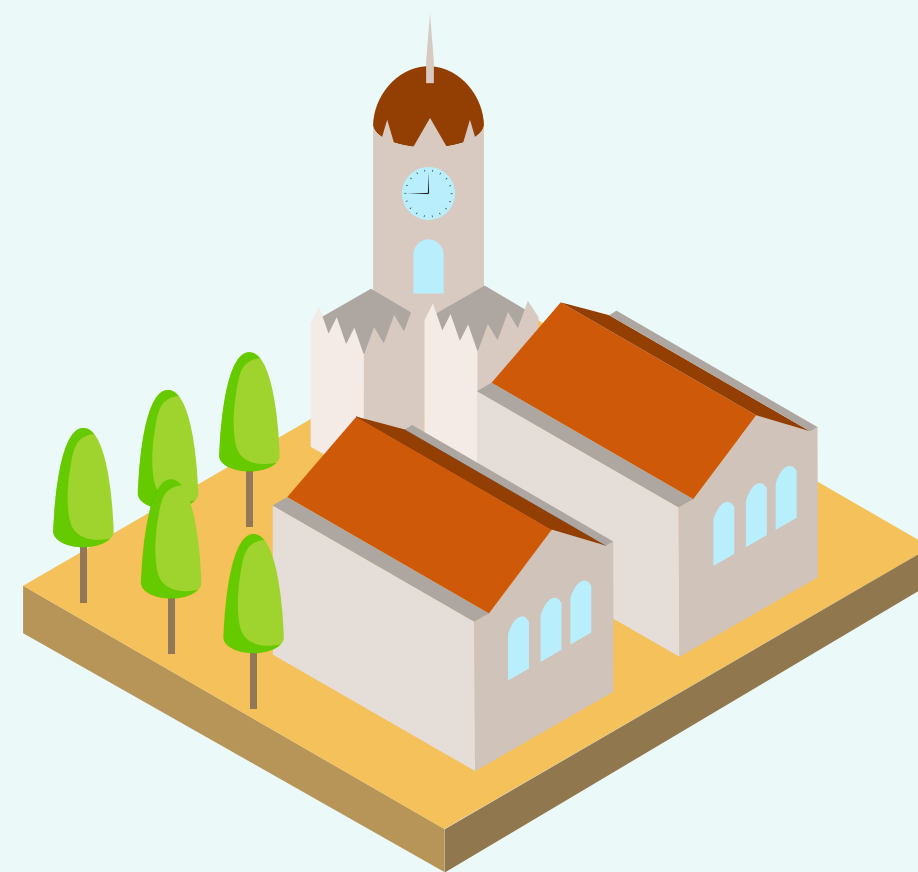
This includes the provision of information about employment opportunities during study, such as Student Job Search.



\$628,000

Advocacy and legal advice

The levy helps to advocate on behalf of individual students and groups of students, and provides independent support to resolve problems. This primarily includes AUSA's Advice Hub and executives, along with designated spaces to undertake these activities.



\$4,290,000

Sport, recreation and cultural activities

The levy covers a range of activities including sporting programmes, competitions and support, awards for extra-curricular success like Blues Awards, support for overseas competitions and events including reorientation and end of year volunteer celebrations. The levy is also used to subsidise student memberships at the Recreation Centre.



\$8,916,000

Facilities & Infrastructure

Facilities and infrastructure improvements delivered in 2019 included the upgrading and relocation of a number of retail spaces including Shadows and Relax Café. Future improvement plans include creating a student kitchen and lounge on Level 2 of the Kate Edgar building, a refresh of the Quad and upgrades to the Student Union building.



\$1,936,000

Career information, advice and guidance

This focuses on developing students' career literacy and building their employability skills, to support student retention and successful transitions into the workplace. It also includes connecting students with employers through virtual and on-campus events / activities, so students can grow their employer knowledge and networks.



\$2,902,000

Advisory services and pastoral care

This includes services which provide non-academic advice and pastoral care throughout different parts of the student experience. It includes orientation programmes, mentoring, religious spaces and support, international student support and support advisors.



\$1,671,000

Clubs and societies

The levy supports over 200 student clubs and societies through the provision of direct funding to student groups, organisation of expos, and co-ordination of equipment, resources, workshops, administrative assistance, facilities and support.



\$111,000

Financial support and advice

This includes the provision of hardship, textbook and dental grants, along with financial advice from AUSA and the University.

CONSULTATION PROCESS

The Student Consultative Group is the consultation forum for the levy. This group is made up of student and staff representatives and is chaired by the Vice-Chancellor. This group makes recommendations to the Finance Committee and Council in September. Council sets fees in October.

Students can talk directly with their representative on the Student Consultative Group to make their views known on the levy. To find out who is on SCG, visit the website at: www.auckland.ac.nz/levy.

* 2020 - Current CSSL comparison, based on full time study on campus (120 points)

NZ\$ (GST inclusive)	Building Levy	Student Assistance Levy	Welfare and Recreation	Student Services	TOTAL - 2020	TOTAL - 2019	% change vs. 2019
Auckland				\$943.20	\$943.20	\$847.20	11.3%
AUT	\$76.00			\$760.00	\$836.00	\$717.00	16.6%
Canterbury				\$870.00	\$870.00	\$827.00	5.2%
Massey (Albany)			\$157.10	\$582.20	\$739.30	\$752.40	-1.75%
Massey (Manawatu)	\$30.60		\$76.30	\$582.20	\$689.10	\$703.00	-2%
Otago				\$830.02	\$830.02	\$813.74	2%
Waikato				\$734.00	\$734.00	\$700.00	4.8%
Victoria		\$27.60		\$822.00	\$849.60	\$817.60	3.9%

* The decrease from 2019 to 2020 for Massey University was due to the removal of the Foundation levy which was previously charged.