



CARLAW PARK STUDENT VILLAGE

19-26 NICHOLLS LANE, PARNELL



- Apartment complex ranging from four to seven levels, with shared courtyard.
- Houses 697 residents each year.
- 16 two-bedroom, 123 three-bedroom and 74 four-bedroom apartments available.
- 20 apartments allocated to students with small families (2 adults and up to 3 children).
- Residence is fenced with locked gates.
- Fully furnished lounge and kitchen.
- Responsible use of alcohol allowed in the apartments.
- A noise ban is in place throughout the residence during study and examination periods.



- Single students, and families may apply for the residence.
- This residence is suitable for returning residents, postgraduates, families and international students aged 18+



- Accessible apartments are available.



Fully furnished study bedroom. Each bedroom contains:

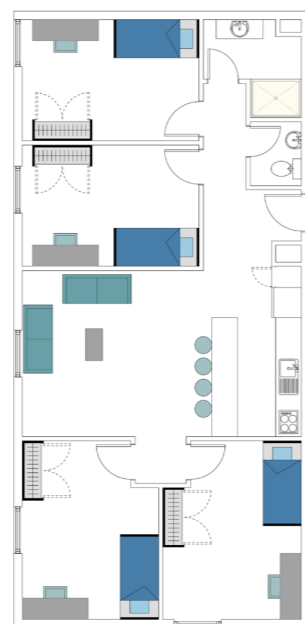
- One long single bed.
(Queen bed is provided in master bedroom of family apartments.)
- One desk and chair.
- One wardrobe.
- One wall-mounted heater.



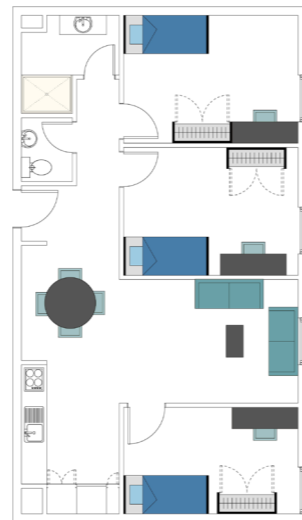
One shared bathroom per apartment, Each bathroom contains:

- One lockable shower.
- One hand basin/vanity.
- One separate lockable toilet.

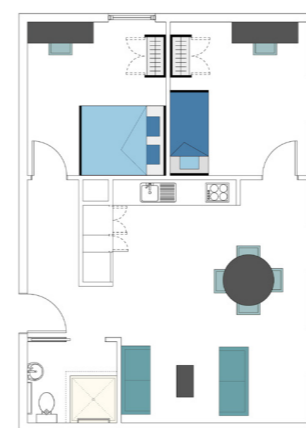
Four bedroom apartment



Three bedroom apartment



Two bedroom apartment



Self-catered residence

- Furnished kitchen with fridge, oven, microwave, toaster and kettle.
- Basic kitchen pack provided with kitchen utensils and crockery.
- Large communal kitchen available in building 833 for group events.



- Residents provide their own pillow, blankets, linen, and towels.
- Alternatively, linen packs can be purchased through the online accommodation shop before arrival. The pack includes: pillow/pillow case, two sheets, duvet/duvet cover, bath towel, face cloth and a laundry bag.
- Students are responsible for cleaning their own rooms and apartments.
- Gardens and grounds attended to regularly.
- Two communal coin operated laundries available with washers and dryers.
- Ironing facilities available in each laundry room.



- Residential fees include reasonable use of all electricity, heating, gas and water charges.



- Internet access in all rooms via UoA wireless network.



- Limited university allocated parking available at an additional cost
- Residents must apply in advance, carparks are allocated based on need only.
- Wilson's parking provide additional parking in the complex and in neighbouring complexes.



- Two lockable bike storage areas provided.



- Large study room with printing/photocopy facilities provided on level two of building 833.
- Music practice room located in building 836, and is equipped with a piano.



- Televisions supplied in every flat.
- Communal lounge located on the first level of building 833. Residents can book use of projector and screen for use in this area.
- Large outdoor chess set located in courtyard
- Games room equipped with pool table and playstation 4, located behind reception.



- Basketball hoop is provided in one of two large courtyards.
- University Recreation Centre is a 15 minute walk away; membership is included in the residential fees.
- Communal barbecue provided for residents use.



- University General Library (centre of the city campus) – 15 minute walk.
- Auckland Domain – 2 minute walk.
- Grafton Campus – 15 minute walk.
- Newmarket Campus – 35 minute walk.
- Parnell/Newmarket shopping precinct – 15-35 minute walk.
- Epsom Campus - 34 minutes by bus.



Single Bedroom

- \$11,574.00 - Academic Year (\$272 per week)
- \$13,774.00 - Feb/Feb or Jul/Jul (\$262 per week)

Two bedroom apartment (family)

- \$18,756.00 - Academic Year (\$443 per week)
- \$22,250.00 - Feb/Feb or Jul/Jul (\$425 per week)

Three bedroom apartment (family)

- \$23,082.00 - Academic Year (\$546 per week)
- \$27,346.00 - Feb/Feb or Jul/Jul (\$523 per week)

All 2018 fees are quoted in \$NZD