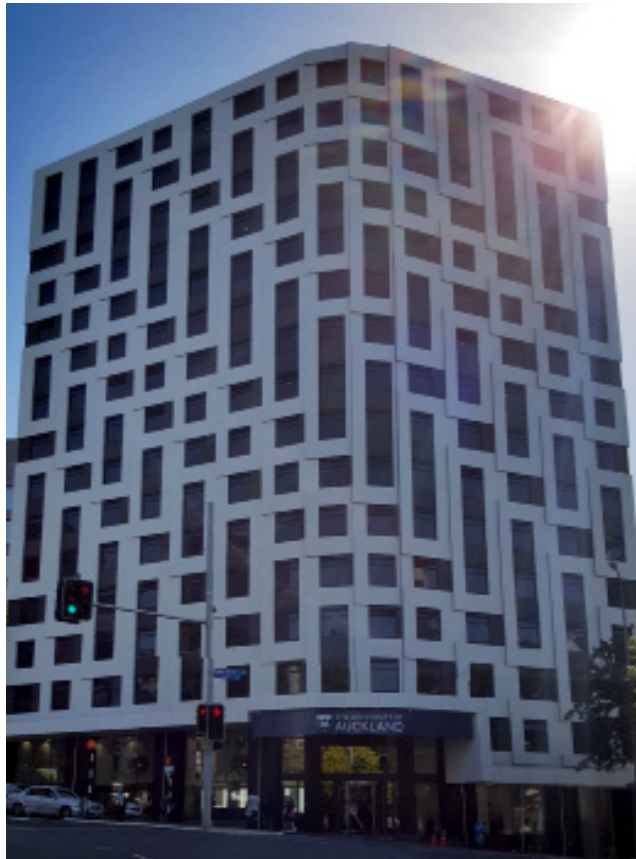




55 SYMONDS

55 SYMONDS STREET, AUCKLAND



- Modern high-rise apartment complex.
- Houses 343 residents each year.
- 315 Studio Deluxe and 28 Studio Deluxe Double apartments.
- Studio Deluxe Double apartments designated to couples only.
- Security access system.
- Responsible use of alcohol allowed in apartments.
- A noise ban is in place throughout the residence during examination periods.



- Can accommodate single students and couples.
- This residence is suitable for students aged 18+ years.



- Accessible apartments available.



Furnished airconditioned/heated rooms.

Studio Deluxe contains:

- One king single bed
- One desk and chair.
- One airconditioner/heater unit.
- One wardrobe.
- One flat screen TV.

Studio Deluxe Double:

- One double bed
- One desk and two chairs.
- One airconditioner/heater unit.
- Two wardrobes.
- One flat screen TV.



En-suite bathroom which contains:

- Shower.
- Toilet.
- Hand basin.



Self-catered residence

- Studio apartments offer a small kitchen with a small fridge, kettle, microwave, toaster and cooking hobs
- A large communal kitchen and outdoor BBQ is available for group activities.
- A basic kitchen pack is provided in all apartments, which include, cutlery crockery, and cooking utensils.



- Residents provide their own pillow, blankets, linen, and towels.
- Alternatively, linen packs can be purchased through the online accommodation shop before arrival. The pack includes: pillow/pillow case, two sheets, duvet/duvet cover, bath towel, face cloth and a laundry bag.
- You are responsible for cleaning your own studio apartment.
- Common areas such as the games room are cleaned regularly by cleaning staff.
- User-pays laundry available with washers, dryers and ironing facilities.



- Residential fees include reasonable use of all electricity, heating, gas and water charges.



- Internet access in all rooms via UoA wireless network.



- No on-site parking available.



- Limited lockable bike storage available.



- Study rooms available suitable for solo or group study sessions.



- Theatre room with large TV and social lounge with TV and playstation console, pool and table tennis tables.



- University General Library (centre of the city campus) - 8 minute walk.
- Grafton Campus - 10 minute walk.
- Epsom Campus - 30 minutes by bus.
- Parnell/Newmarket/Auckland Domain - 25 - 35 minute walk.



Studio Deluxe

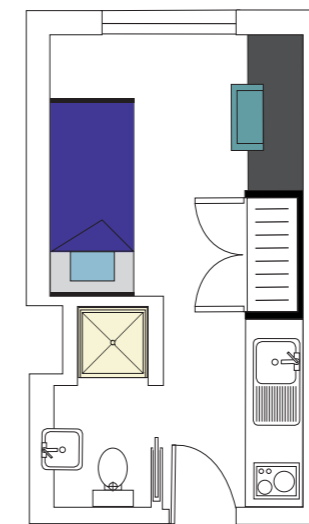
- \$15,984.00 - Academic Year (\$377 per week)
- \$7,992.00 - Semester One/Two (\$377 per week)
- \$18,974.00 - Feb/Feb or Jul/Jul (\$362 per week)

Studio Deluxe Double

- \$16,908.00 - Academic Year (\$399 per week)
- \$8,454.00 - Semester One/Two (\$399 per week)
- \$20,066.00 - Feb/Feb or Jul/Jul (\$383 per week)

All 2020 fees are quoted in \$NZD and are subject to final confirmation.

Deluxe Studio



Deluxe Studio Double

