



O'RORKE HALL

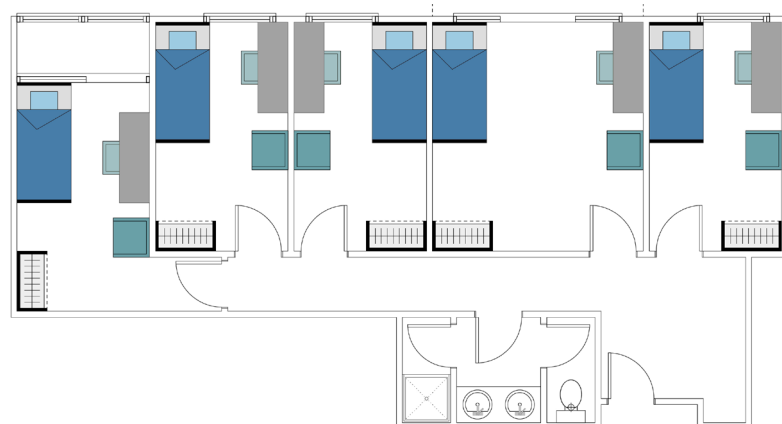
16 MOUNT STREET, AUCKLAND



- Single Room**
- \$15,010.00 - Academic Year (\$385 per week)
- Large Single Room**
- \$15,967.14 - Academic Year (\$410 per week)

All 2020 fees are quoted in \$NZD and are subject to final confirmation.

Typical 5 bedroom pod



- 12-storey high-rise residence.
- 311 standard single rooms, 55 large single rooms.
- Approximately 35 students per floor in a system of pods, four to seven rooms per pod.
- Limited single gender pods available.
- Security access system.
- Responsible use of alcohol allowed in individual rooms.
- Common areas are alcohol free.
- A noise and alcohol ban is in place throughout the Hall during study and examination periods.



- Single student only, cannot accommodate couples or families.
- This residence is designated to First Year - High School Leaver applicants only, aged 17-19 years.



- Wheelchair access throughout. Several pods are designed/modified for the mobility impaired.



Fully furnished study bedroom. Each bedroom contains:

- One long single bed.
- One desk and chair.
- One mobile drawer unit.
- One wall-mounted heater.
- One wardrobe.
- One noticeboard and mirror.



One bathroom per pod shared between four to seven students. Each bathroom contains:

- One lockable shower.
- One lockable toilet.
- Two hand basins.



Fully-catered Hall of Residence

- Breakfast, lunch and dinner served on week days, brunch and dinner served on the weekends.
- Vegetarian/Gluten Free/Vegan & Meat options are available at lunch and dinner.
- Packed lunches and late dinners are available by arrangement.
- Kitchenette with fridge, microwave, and kettle available in each floor common room.

Meal Times

- Breakfast: 7.15am - 9am
- Lunch: 11.30am - 1.30pm
- Dinner: 5.30pm - 7pm
- Brunch (weekends): 10.30am - 2.30pm



- Residents provide their own pillow, blankets, linen, and towels.
- Alternatively, linen packs can be purchased through the online accommodation shop before arrival. The pack includes: pillow/pillow case, two sheets, duvet/duvet cover, bath towel, face cloth and a laundry bag.
- Laundry facilities included in your fees. Ironing facilities are available on each floor.
- Residents are responsible for cleaning their own rooms.
- Bathrooms serviced daily.
- Communal areas serviced weekly.
- Gardens and grounds attended to regularly.



- Residential fees include all electricity, heating, gas and water charges.



- University Wi-Fi internet access available throughout the hall.
- Computers and printer/photocopier facilities available in Study room - charges apply.



- Very limited under-cover parking available at an additional cost
- Residents must apply in advance, carparks are allocated based on need only.



- Lockable bike storage available.



- Music practice room available with a Baby Grand piano.
- Academic mentoring and study support sessions organised during the year.
- Study room available suitable for solo or group study sessions.



- Big Screen Sky television lounge.
- Television provided in every floor common room.
- Large outdoor BBQ patio.



- All weather floodlit volleyball court with basketball hoops.
- TV/Games room equipped with pool table.



- University General Library (centre of the city campus) - 5 minute walk.
- Grafton Campus - 10 minute walk.
- Epsom Campus - 25 minutes by bus.
- Parnell/Newmarket/Auckland Domain - 20 - 30 minute walk.