

# The Māori in-between?

Identity, health, and social service access needs

**Dr Lara Greaves**

COMPASS Colloquium,  
Wellington 2021



THE UNIVERSITY OF  
**AUCKLAND**  
Te Whare Wānanga o Tāmaki Makaurau  
NEW ZEALAND

**PUBLIC POLICY  
INSTITUTE**

Te Whare Marea Tātari Kaupapa



# Outline

Introduction & Rationale  
Team & Process  
Methods  
Results  
Discussion  
Implications & Next Steps

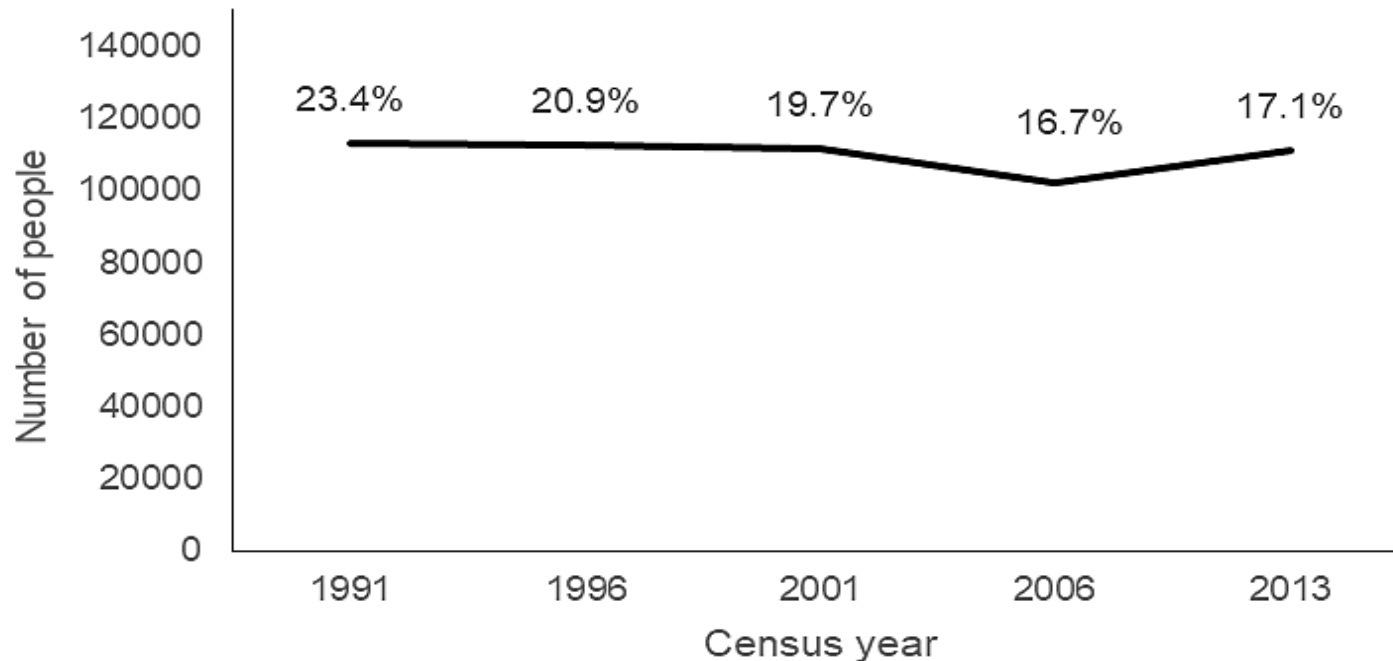


# Introduction

- Kōrero on idea/personal story
- Independent Māori Health authority (?; WAI2575) and move to Mana Māori Motuhake in policy
- Racism in health toward Māori (e.g. Harris et al., 2006a, 2006b, 2012; Paradies et al., 2008)
- Positive cultural identity helps buffer effects of racism (Cohen & Wills, 1985; Durie, 2006; Fox et al., 2018; Matika et al., 2017; Muriwai et al., 2015; Williams et al., 2018)
- Survey researcher; limitations here
- Not lacking; whakapapa is there regardless of knowledge



## Number and % of people of Māori descent who do not identify with an iwi



**Where do we/they go though? (*In-between?*)**



# Team & Process

- Cinnamon Lindsay, Eileen Li
- **Mentor:** Barry Milne
- **Advisors:** Andrew Sporle, Larissa Renfrew, Logan Hamley, Terryann Clark, Carla Houkamau, Charlotte Moore, Toni Duder
- **Māori Data Sovereignty Reading Rōpū**
- **Later paper:** How do we make the IDI \*ok\* for Māori? – A critical literature review



# Methods

- Integrated Data Infrastructure (IDI)
- Census 2013
- Census 2018 data quality issues

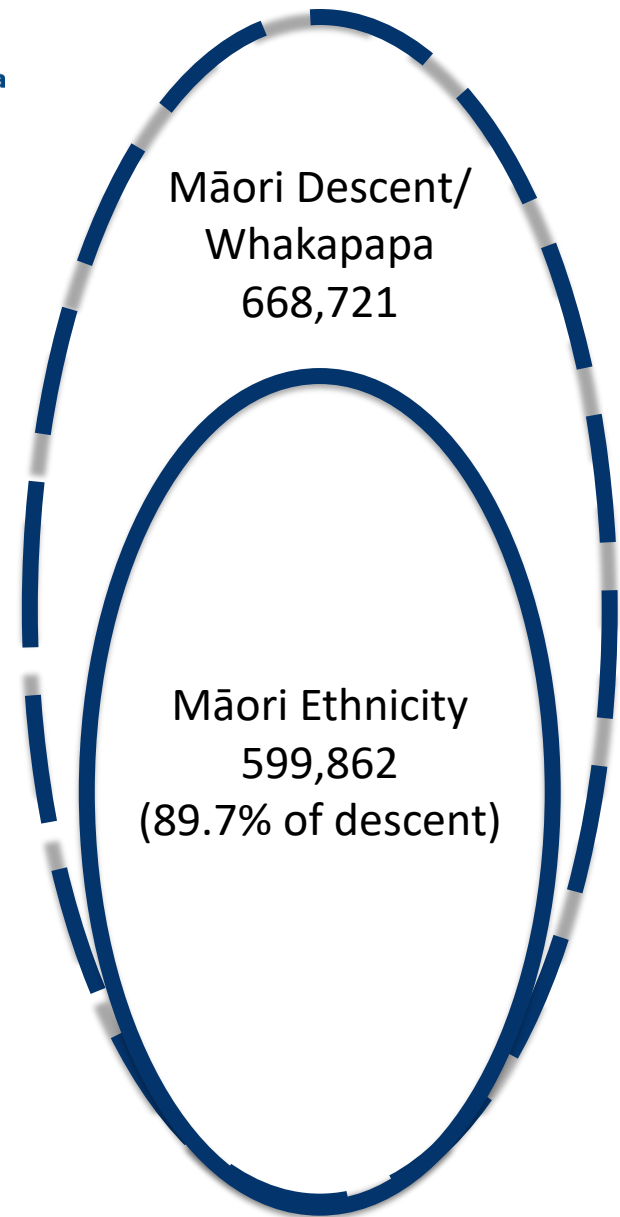
The results in this report are not official statistics, they have been created for research purposes from the Integrated Data Infrastructure (IDI), managed by Statistics New Zealand. The opinions, findings, recommendations, and conclusions expressed in this report are those of the authors, not Statistics NZ. Access to the anonymised data used in this study was provided by Statistics NZ in accordance with security and confidentiality provisions of the Statistics Act 1975. Only people authorised by the Statistics Act 1975 are allowed to see data about a particular person, household, business, or organisation, and the results in this report have been confidentialised to protect these groups from identification. Careful consideration has been given to the privacy, security, and confidentiality issues associated with using administrative and survey data in the IDI. Further detail can be found in the Privacy impact assessment for the Integrated Data Infrastructure available from [www.stats.govt.nz](http://www.stats.govt.nz)





# Methods

- Initial plan to use MIFAS and Youth2000 series
- Link to Te Kupenga 2013 for experiences of discrimination
- Identity note
- **Later** link to health and social service outcomes

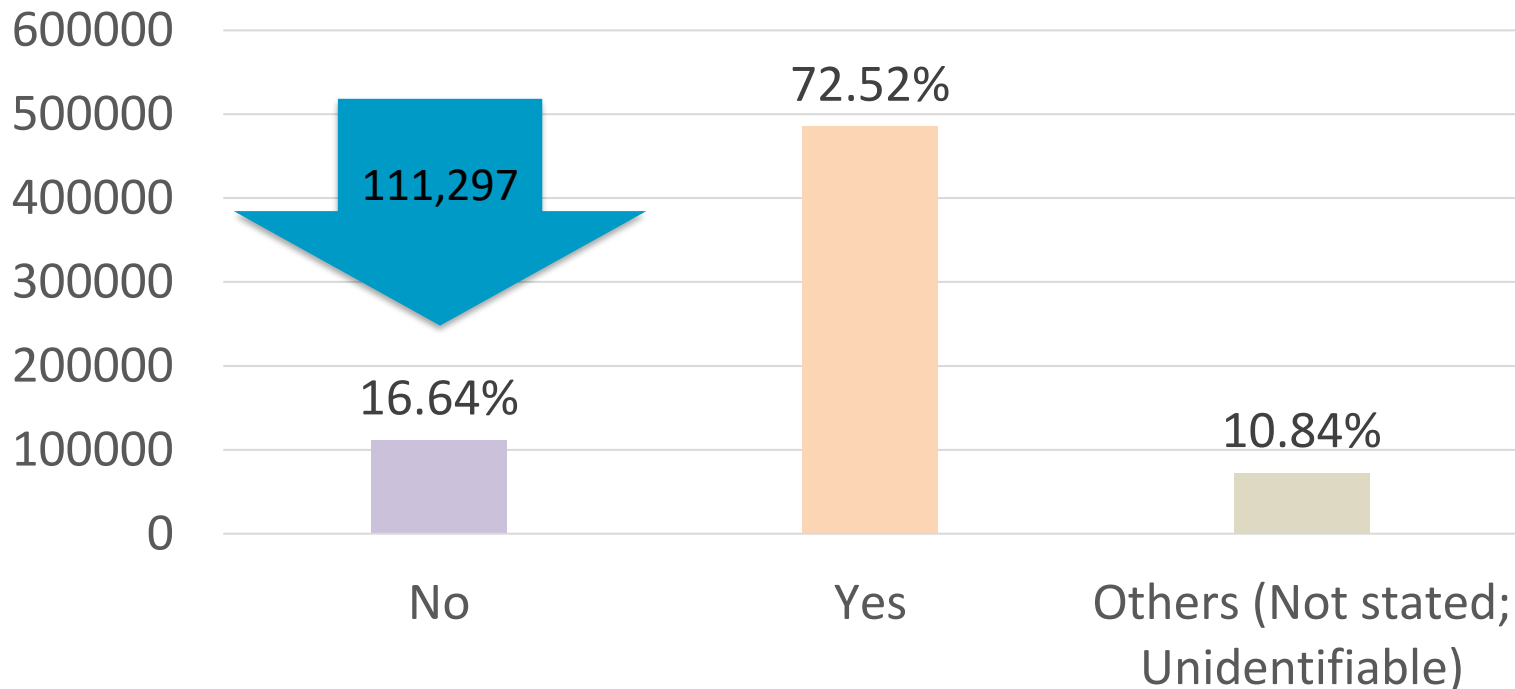






# Results

Māori descent Iwi identification, 2013 Census





THE UNIVERSITY OF  
**AUCKLAND**  
Te Whare Wānanga o Tamaki Makaurau  
NEW ZEALAND

**PUBLIC POLICY**  
**INSTITUTE**  
Te Whare Marea Tātari Kaupapa

Don't know Iwi

Don't ID as  
Māori

46,290 (7.8%)

Know Iwi

Don't ID as  
Māori

48,105 (8.1%)

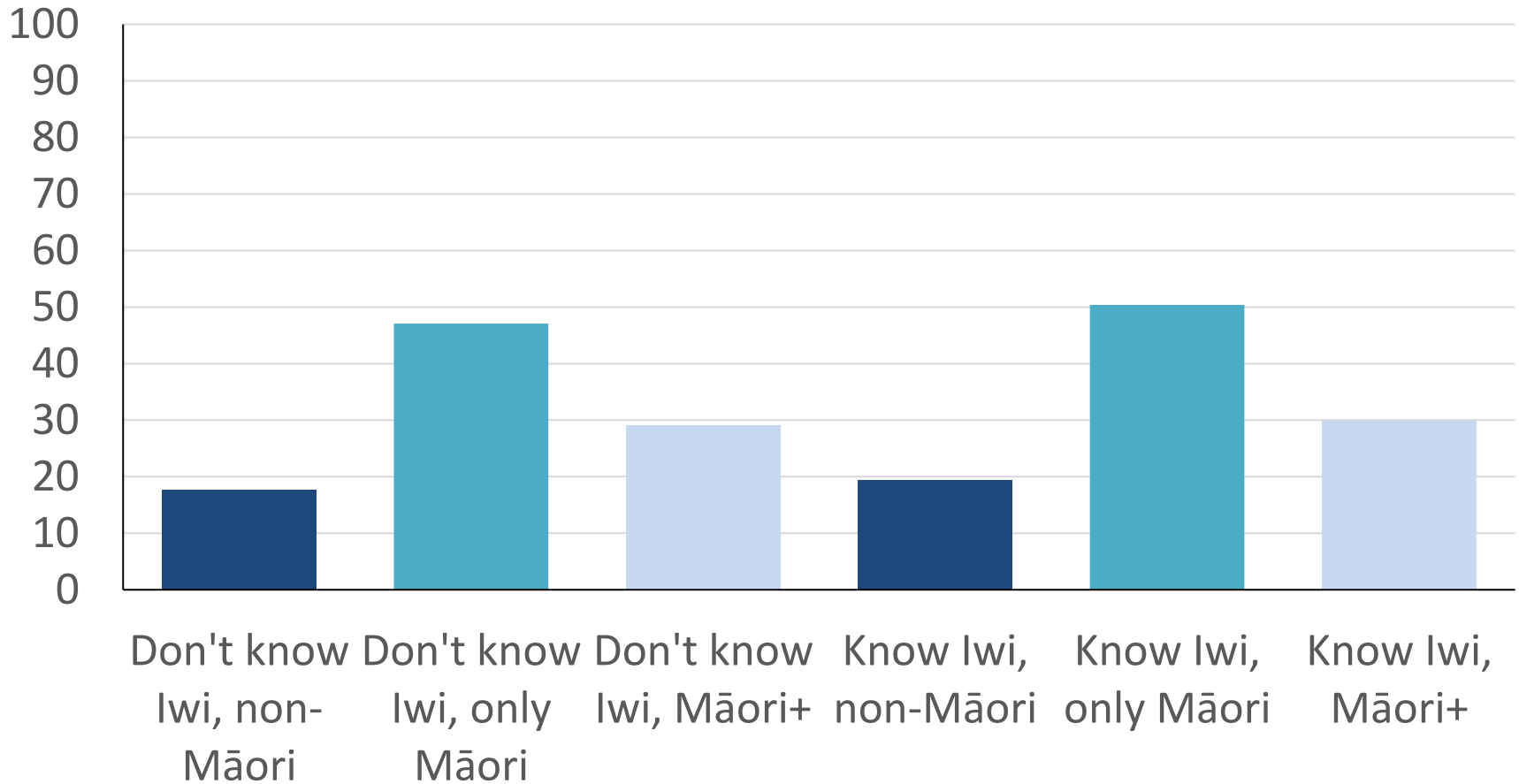


# Other Notable Results

- What are further levels of dis-identification?
- **7th group** (N = 35,229) – parents are Māori descent; they are not; mean age of 7
- 92% of Don't know Iwi, no ID as Māori were Pākehā; 3.4% Pacific; but 4.3% other (1.7% general population)
- Pattern of age and knowing one's iwi (31 and 37 vs 28 and 28); although Māori and another ethnicity tended to be younger (21 and 24)
- More men: Don't know Iwi, only Māori (56%); Don't know Iwi, Māori+ (51%; Kukutai & Rarere, 2017)

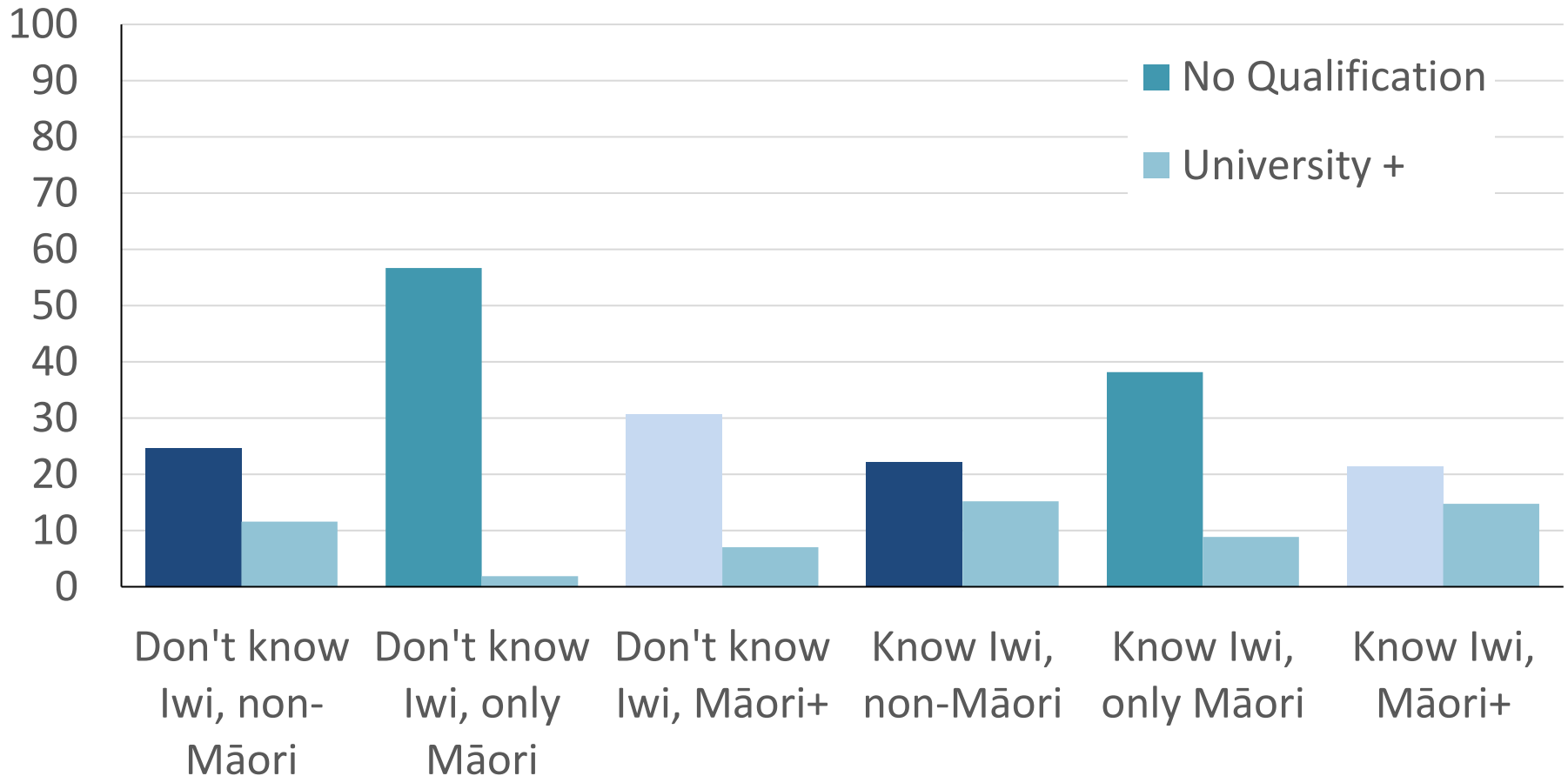


## % most deprived quintile





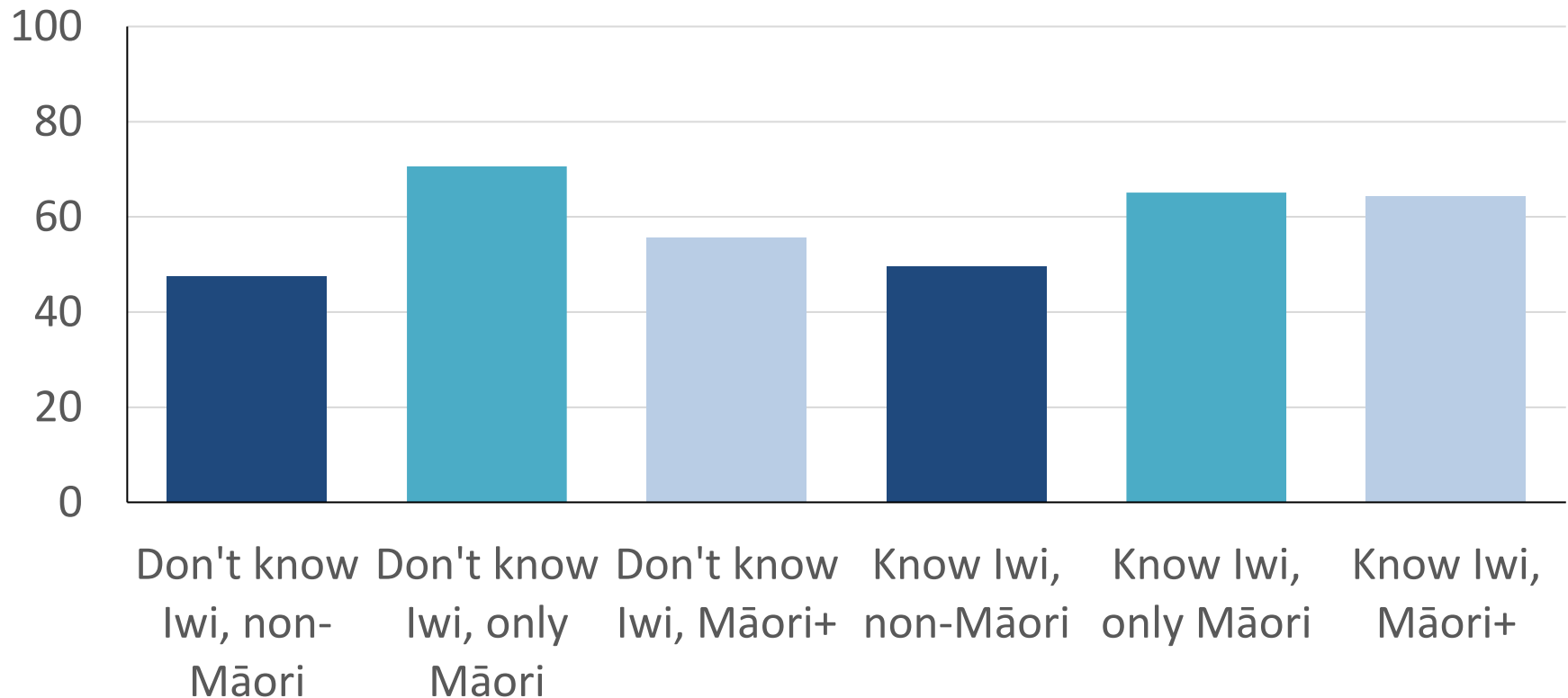
## % education levels





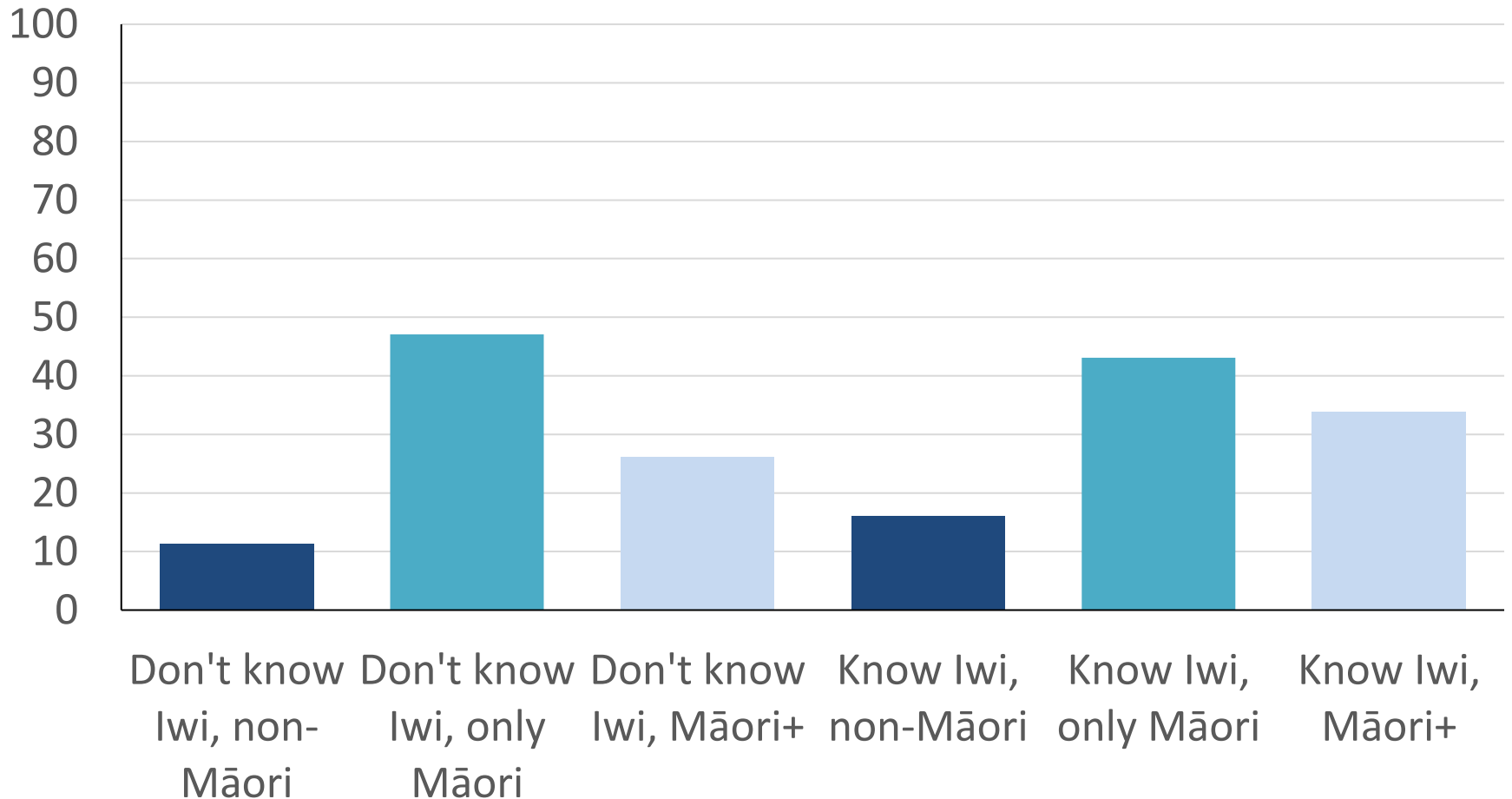
# Discrimination

% ever experienced discrimination



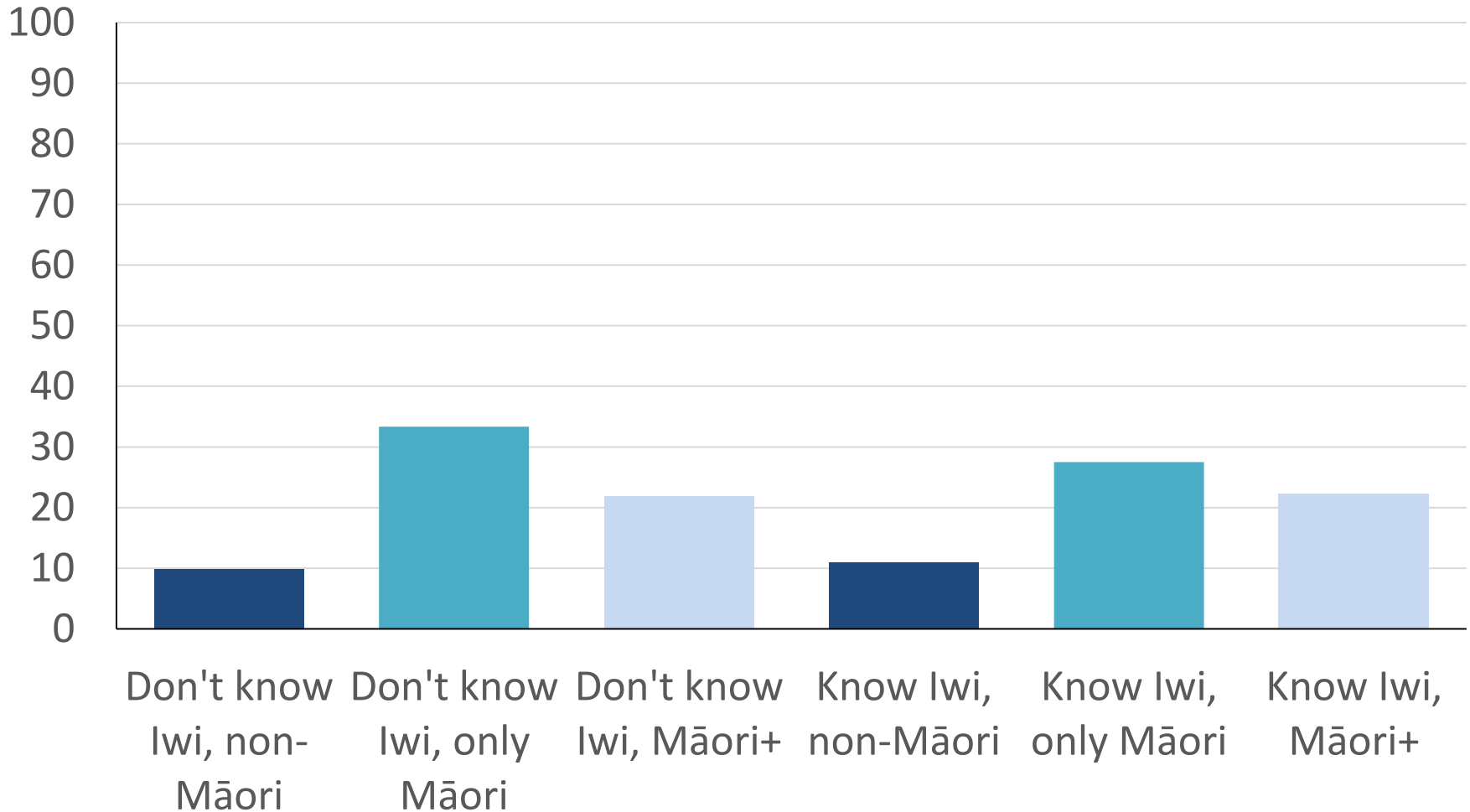


## % ever experienced race/ethnic group discrimination





## % ever experienced skin colour discrimination







# Discussion

- There are meaningful differences *within* “Māori”
- Group of 18,978 (3.2%) Don’t know their Iwi, but identify only as Māori
  - Seem to be the most marginalised
- Surprise at “NZers of Māori descent”-type group – more know their Iwi (8.1%) than don’t (7.8%)
  - Expect them to be distant, but a lot know their Iwi
  - Barriers to identifying as Māori
  - Tried to compare identification across Census and Te Kupenga knowing questions
- Limitations around racism questions
  - Perceived discrimination
  - Confounding-type variable here?



# Discussion

- Do these groups vary across health and social service access needs?
- Our demographic results suggest: yes, probably
- Māori agency and Iwi questions – need to figure out how to follow up
- How do Māori navigate these questions? Cognitive testing
- These decisions are political in and of themselves
- Longitudinal work

Thank you

Ngā mihi ki a koutou katoa

*And to the Public Policy Institute for Data Lab access*



**PUBLIC POLICY  
INSTITUTE**

Te Whare Marea Tātari Kaupapa

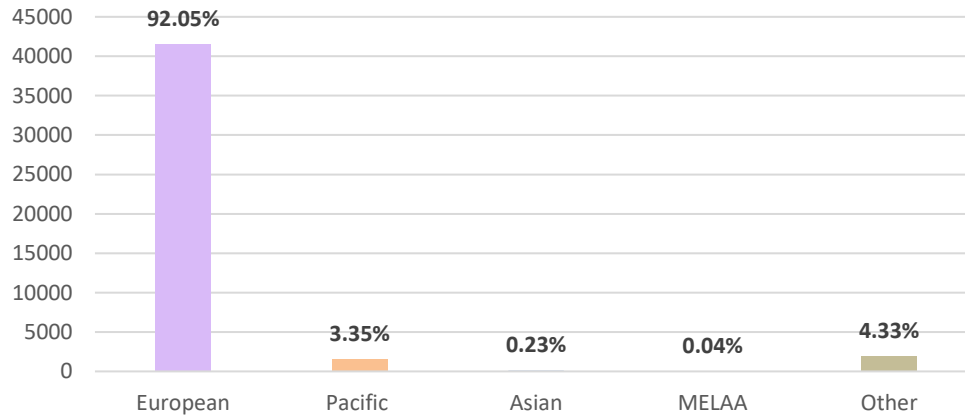


# References

- Cohen, S. and T.A. Wills, *Stress, social support, and the buffering hypothesis*. Psychological bulletin, 1985. **98**(2): p. 310.
- Durie, M., *Measuring Māori wellbeing*, in *New Zealand Treasury Guest Lecture Series*. 2006. p. 2007-09.
- Fox, R., T. Neha, and P.E. Jose, *Tū Māori Mai: Māori Cultural Embeddedness Improves Adaptive Coping and Wellbeing for Māori Adolescents*. New Zealand Journal of Psychology, 2018. **47**(2): p. 14-24.
- Harris, R., et al., *The pervasive effects of racism: experiences of racial discrimination in New Zealand over time and associations with multiple health domains*. 2012. **74**(3): p. 408-415.
- Harris, R., et al., *Effects of self-reported racial discrimination and deprivation on Māori health and inequalities in New Zealand: cross-sectional study*. The Lancet, 2006. **367**(9527): p. 2005-2009.
- Harris, R., et al., *Racism and health: The relationship between experience of racial discrimination and health in New Zealand*. 2006. **63**(6): p. 1428-1441.
- Kukutai, T. and M. Rarere, *Iwi sex ratios in the New Zealand population census: Why are women so dominant?* New Zealand Population Review, 2017. **43**: p. 63-92.
- Matika, C.M., et al., *Cultural Efficacy Predicts Increased Self Esteem for Maori: The Mediating Effect of Rumination*. New Zealand Journal of Psychology, 2017. **46**(3): p. 176-185.
- Muriwai, E., C.A. Houkamau, and C.G. Sibley, *Culture as cure? The protective function of Māori cultural efficacy on psychological distress*. New Zealand Journal of Psychology, 2015. **44**(2): p. 14-24.
- Paradies, Y., R. Harris, and I. Anderson, *The impact of racism on Indigenous health in Australia and Aotearoa: Towards a research agenda*. 2008: Cooperative Research Centre for Aboriginal Health.
- Williams, A.D., T.C. Clark, and S. Lewycka, *The associations between cultural identity and mental health outcomes for indigenous Māori youth in New Zealand*. Frontiers in public health, 2018. **6**: p. 319.



Ethnicity breakdown for Māori descent with no iwi identification and do not self-identify as Māori



Ethnicity breakdown for Māori descent with iwi identification and do not self-identify as Māori

