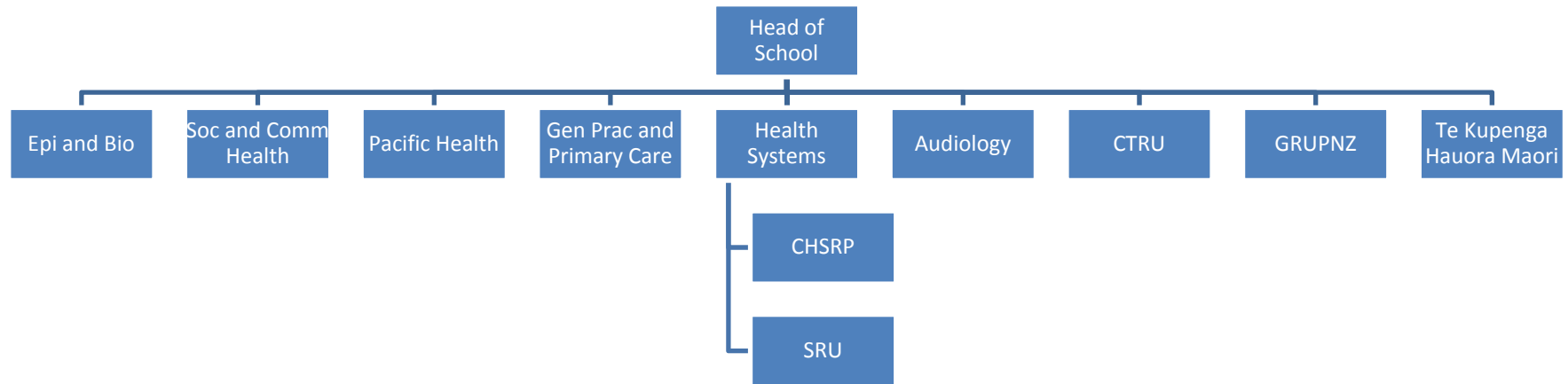


# **Health services and health systems research in the School of Population Health**

Toni Ashton

Director, Centre for Health Services  
Research and Policy

# SOPH structure



# Who is in CHSRP?

- 8 academics
- 10 full-time staff
  - 5 research fellows
  - 5 research associates or assistants
- About 12 casual research assistants

# What do we do?

## Mix of grant funded and contract research

- Health services research
  - 5 yr follow up of stroke survivors to determine their health services utilisation, clinical and economic outcomes
  - MeNZB Immunisation: Disparities Analysis
  - Projecting demand for nurses, long term care beds
- Programme evaluations
  - Let's Beat Diabetes
  - Project Energize (Waikato)
  - Pacific Island Heartbeat

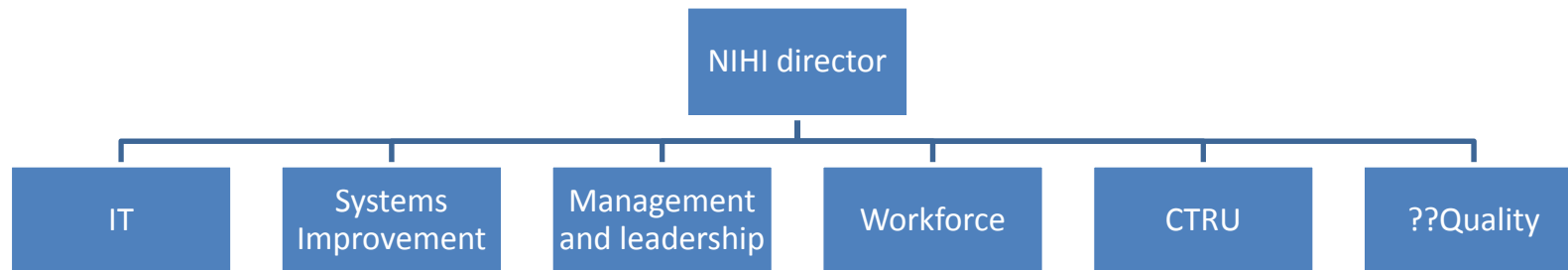
# What do we do?

- Economic evaluations
  - Supermarket Health Options Project (SHOP)
  - Green prescription and pedometer use
  - Prevention of falls among the elderly
  - Intervention to prevent self-harm
- Change management and leadership
- Behavioural and psychosocial health research

# Challenges

- Providing continuous work for research staff
- Upskilling of staff working on contracts
- Getting papers written for publications
- Finding and retaining good senior research staff
- Development of NIHI

# National Institute of Health Innovation NIHI



# Systems Improvement

- Encompasses the entire process of financing, planning, funding, organizing, managing and providing health services
- Concerned with improvements and innovations in policy and practice.
- Strong focus on understanding the relationships and dynamics that underlie health service funding, organisation and delivery as well as on analysis of the data that informs these activities
- Usually translational



# Type of research

- Multi-disciplinary.....
- Health services data analysis
- Economic evaluation
- Policy analysis
- Programme evaluation
- Organizational behaviour, strategy and change
- Economic modelling
- Survey research

# Some questions...

- Should NIHI be a Faculty or inter-Faculty Institute?
- How does CHSRP fit with NIHI?
- Should we strengthen collaboration between NIHI/CHSRP and COMPASS? If so, how?