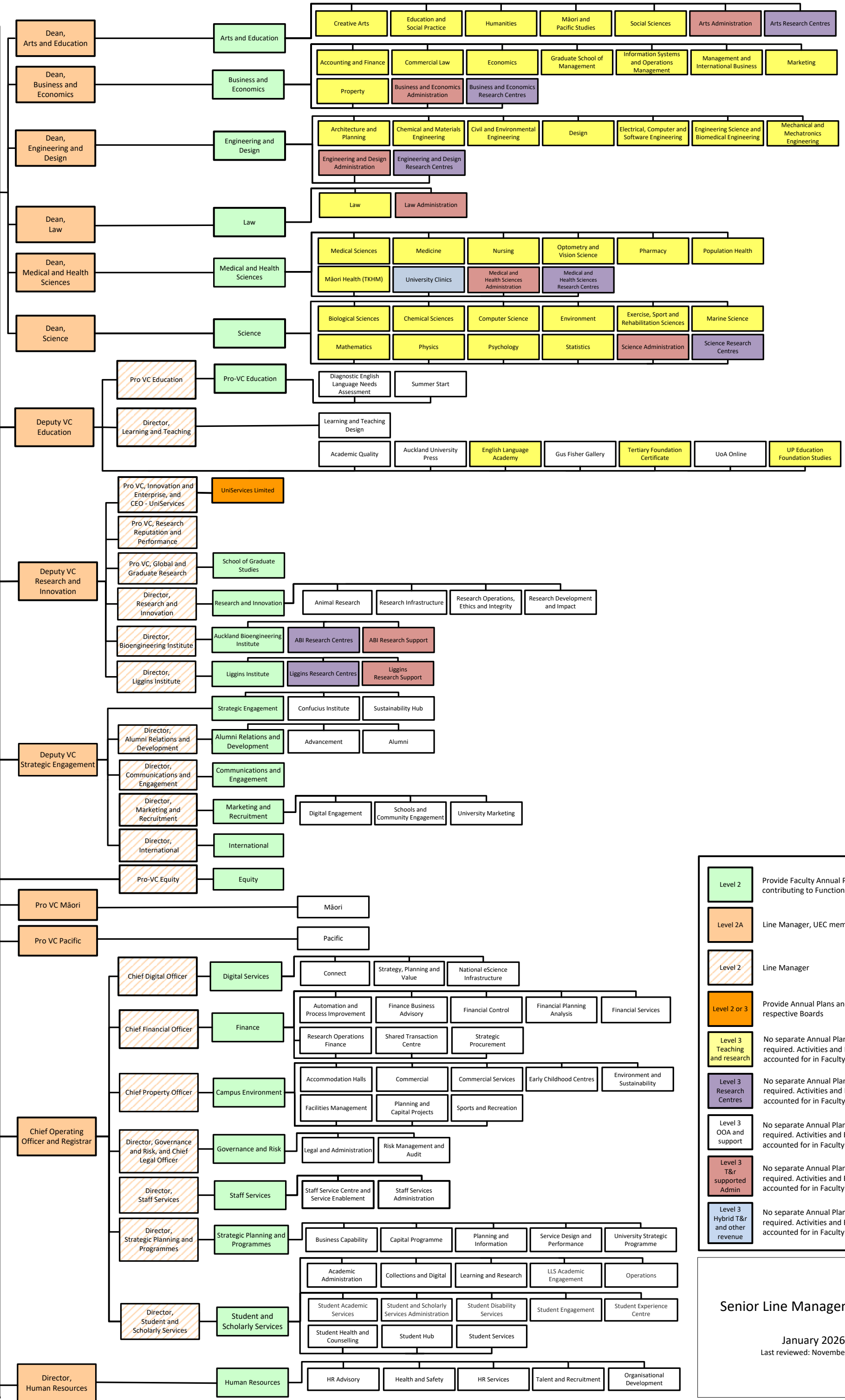


Vice-Chancellor



| | |
|--------------------------------------|---|
| Level 2 | Provide Faculty Annual Plans and Reports or contributing to Function Plans |
| Level 2A | Line Manager, UEC member |
| Level 2 | Line Manager |
| Level 2 or 3 | Provide Annual Plans and Reports to respective Boards |
| Level 3 Teaching and research | No separate Annual Plans and Reports required. Activities and Budget should be accounted for in Faculty/LSRI Plans |
| Level 3 Research Centres | No separate Annual Plans and Reports required. Activities and Budget should be accounted for in Faculty/LSRI Plans |
| Level 3 OOA and support | No separate Annual Plans and Reports required. Activities and Budget should be accounted for in Faculty or Function Plans |
| Level 3 T&r supported Admin | No separate Annual Plans and Reports required. Activities and Budget should be accounted for in Faculty or Function Plans |
| Level 3 Hybrid T&r and other revenue | No separate Annual Plans and Reports required. Activities and Budget should be accounted for in Faculty or Function Plans |

Senior Line Management View

January 2026
Last reviewed: November 2025